

PENBERTHY dimensions

Section 2000
Dimensions 2701.1
Issued 04/09
Replaces 07/05

For: **MINIMUM GAGECOCK CENTERS**

**Series L, M, H and LC Gages with
Series 100, 200, 300 and 400 Gagecocks**

FOR 1/2" END CONNECTED GAGES ONLY

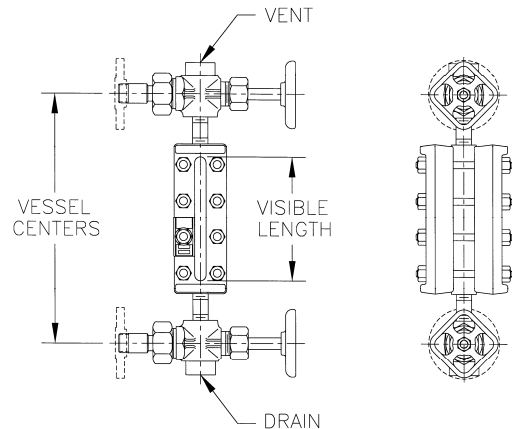
Gage Model Number								Visible Glass inches & [cm]	MINIMUM GAGECOCK VESSEL CENTERS IN INCHES [CM]					
									1/2" NPT GAGE CONNECTION					130, 230, 330, 430
									Standard (F) Union	Optional (M) Union	Optional (F) Spherical Union	Optional (M) Spherical Union	Standard (F) Rigid	
REFLEX				TRANSPARENT				120, 220, 320, 420						
RL	RM	RLC	RH	TL	TM	TLC	TH	Gagecock with Nipples	Gagecock	Gagecock with Nipples	Gagecock	Gagecock with Nipples		
1RL1	1RM1			1TL1	1TM1			3 3/4 [9.5]	10 7/8 [27.6]	11 [27.9]	13 5/8 [34.6]	12 1/2 [31.8]	7 7/8 [20.0]	
1RL2	1RM2			1TL2	1TM2			4 3/4 [12.1]	11 7/8 [30.1]	12 [30.5]	14 5/8 [37.1]	13 1/2 [34.3]	8 7/8 [22.5]	
1RL3	1RM3			1TL3	1TM3			5 3/4 [14.6]	12 7/8 [32.7]	13 [33.0]	15 5/8 [39.7]	14 1/2 [36.8]	9 7/8 [25.1]	
1RL4	1RM4	1RLC4	1RH4	1TL4	1TM4	1TLC4	1TH4	6 3/4 [17.1]	13 7/8 [35.2]	14 [35.6]	16 5/8 [42.2]	15 1/2 [39.4]	10 7/8 [27.6]	
1RL5	1RM5	1RLC5	1RH5	1TL5	1TM5	1TLC5	1TH5	7 7/8 [20.0]	15 [38.1]	15 1/8 [38.4]	17 3/4 [45.1]	16 5/8 [42.2]	12 [30.5]	
1RL6	1RM6	1RLC6	1RH6	1TL6	1TM6	1TLC6	1TH6	9 1/8 [23.2]	16 1/4 [41.3]	16 3/8 [41.6]	19 [48.3]	17 7/8 [45.4]	13 1/4 [33.7]	
1RL7	1RM7	1RLC7	1RH7	1TL7	1TM7	1TLC7	1TH7	10 1/4 [26.0]	17 3/8 [44.1]	17 1/2 [44.5]	20 1/8 [51.1]	19 [48.3]	14 3/8 [36.5]	
1RL8	1RM8	1RLC8	1RH8	1TL8	1TM8	1TLC8	1TH8	11 7/8 [30.2]	19 [48.3]	19 1/8 [48.6]	21 3/4 [55.2]	20 5/8 [52.4]	16 [40.6]	
1RL9	1RM9	1RLC9	1RH9	1TL9	1TM9	1TLC9	1TH9	12 5/8 [32.1]	19 3/4 [50.2]	19 7/8 [50.5]	22 1/2 [57.2]	21 3/8 [54.3]	16 3/4 [42.5]	
2RL4	2RM4	2RLC4	2RH4	2TL4	2TM4	2TLC4	2TH4	15 [38.1]	22 1/8 [56.2]	22 1/4 [56.5]	24 7/8 [63.2]	23 3/4 [60.3]	19 1/8 [48.6]	
2RL5	2RM5	2RLC5	2RH5	2TL5	2TM5	2TLC5	2TH5	17 1/4 [43.8]	24 3/8 [61.9]	24 1/2 [62.2]	27 1/8 [68.9]	26 [66.0]	21 3/8 [54.3]	
2RL6	2RM6	2RLC6	2RH6	2TL6	2TM6	2TLC6	2TH6	19 3/4 [50.2]	26 7/8 [68.3]	27 [68.6]	29 5/8 [75.2]	28 1/2 [72.4]	23 7/8 [60.6]	
2RL7	2RM7	2RLC7	2RH7	2TL7	2TM7	2TLC7	2TH7	22 [55.9]	29 1/8 [74.0]	29 1/4 [74.3]	31 7/8 [81.0]	30 3/4 [78.1]	26 1/8 [66.4]	
2RL8	2RM8	2RLC8	2RH8	2TL8	2TM8	2TLC8	2TH8	25 1/4 [64.1]	32 3/8 [82.2]	32 1/2 [82.6]	35 1/8 [89.2]	34 [86.4]	29 3/8 [74.6]	
2RL9	2RM9	2RLC9	2RH9	2TL9	2TM9	2TLC9	2TH9	26 3/4 [67.9]	33 7/8 [86.0]	34 [86.4]	36 5/8 [93.0]	35 1/2 [90.2]	30 7/8 [78.4]	
3RL6	3RM6	3RLC6	3RH6	3TL6	3TM6	3TLC6	3TH6	30 3/8 [77.2]	37 1/2 [95.3]	37 5/8 [95.6]	40 1/4 [102.2]	39 1/8 [99.4]	34 1/2 [87.6]	
3RL7	3RM7	3RLC7	3RH7	3TL7	3TM7	3TLC7	3TH7	33 3/4 [85.7]	40 7/8 [103.8]	41 [104.1]	43 5/8 [110.8]	42 1/2 [108.0]	37 7/8 [96.2]	
3RL8	3RM8	3RLC8	3RH8	3TL8	3TM8	3TLC8	3TH8	38 5/8 [98.1]	45 3/4 [116.2]	45 7/8 [116.5]	48 1/2 [123.2]	47 3/8 [120.3]	42 3/4 [108.6]	
3RL9	3RM9	3RLC9	3RH9	3TL9	3TM9	3TLC9	3TH9	40 7/8 [103.8]	48 [121.9]	48 1/8 [122.2]	50 3/4 [128.9]	49 5/8 [126.0]	45 [114.3]	
4RL7	4RM7	4RLC7	4RH7	4TL7	4TM7	4TLC7	4TH7	45 1/2 [115.6]	52 5/8 [133.7]	52 3/4 [134.0]	55 3/8 [140.7]	54 1/4 [137.8]	49 5/8 [126.0]	
4RL8	4RM8	4RLC8	4RH8	4TL8	4TM8	4TLC8	4TH8	52 [132.1]	59 1/8 [150.2]	59 1/4 [150.5]	61 7/8 [157.2]	60 3/4 [154.3]	56 1/8 [142.6]	
4RL9	4RM9	4RLC9	4RH9	4TL9	4TM9	4TLC9	4TH9	55 [139.7]	62 1/8 [157.8]	62 1/4 [158.1]	64 7/8 [164.8]	63 3/4 [161.9]	59 1/8 [150.2]	
5RL7	5RM7	5RLC7	5RH7	5TL7	5TM7	5TLC7	5TH7	57 1/4 [145.4]	64 3/8 [163.5]	64 1/2 [163.8]	67 1/8 [170.5]	66 [167.6]	61 3/8 [155.9]	
5RL8	5RM8	5RLC8	5RH8	5TL8	5TM8	5TLC8	5TH8	65 3/8 [166.1]	72 1/2 [184.2]	72 5/8 [184.5]	75 1/4 [191.1]	74 1/8 [188.3]	69 1/2 [176.5]	
5RL9	5RM9	5RLC9	5RH9	5TL9	5TM9	5TLC9	5TH9	69 1/8 [175.6]	76 1/4 [193.7]	76 3/8 [194.0]	79 [200.7]	77 7/8 [197.8]	73 1/4 [186.1]	
6RL8	6RM8	6RLC8	6RH8	6TL8	6TM8	6TLC8	6TH8	78 3/4 [200.0]	85 7/8 [218.1]	86 [218.4]	88 5/8 [225.1]	87 1/2 [222.3]	82 7/8 [210.5]	
6RL9	6RM9	6RLC9	6RH9	6TL9	6TM9	6TLC9	6TH9	83 1/4 [211.5]	90 3/8 [229.6]	90 1/2 [229.9]	93 1/8 [236.5]	92 [233.7]	87 3/8 [221.9]	
7RL8	7RM8	7RLC8	7RH8	7TL8	7TM8	7TLC8	7TH8	92 1/8 [234.0]	99 1/4 [252.1]	99 3/8 [252.4]	102 [259.1]	100 7/8 [256.2]	96 1/4 [244.5]	
7RL9	7RM9	7RLC9	7RH9	7TL9	7TM9	7TLC9	7TH9	97 3/8 [247.3]	104 1/2 [265.4]	104 5/8 [265.7]	107 1/4 [272.4]	106 1/8 [269.6]	101 1/2 [257.8]	
8RL8	8RM8	8RLC8	8RH8	8TL8	8TM8	8TLC8	8TH8	105 1/2 [268.0]	112 5/8 [286.1]	112 3/4 [286.4]	115 3/8 [293.1]	114 1/4 [290.2]	109 5/8 [278.4]	
8RL9	8RM9	8RLC9	8RH9	8TL9	8TM9	8TLC9	8TH9	111 1/2 [283.2]	118 5/8 [301.3]	118 3/4 [301.6]	121 3/8 [308.3]	120 1/4 [305.4]	115 5/8 [293.7]	
9RL8	9RM8	9RLC8	9RH8	9TL8	9TM8	9TLC8	9TH8	118 7/8 [301.9]	126 [320.0]	126 1/8 [320.4]	128 3/4 [327.0]	127 5/8 [324.2]	123 [312.4]	
9RL9	9RM9	9RLC9	9RH9	9TL9	9TM9	9TLC9	9TH9	125 5/8 [319.1]	132 3/4 [337.2]	132 7/8 [337.5]	135 1/2 [344.2]	134 3/8 [341.3]	129 3/4 [329.6]	
10RL8	10RM8	10RLC8	10RH8	10TL8	10TM8	10TLC8	10TH8	132 1/4 [335.9]	139 3/8 [354.0]	139 1/2 [354.3]	142 1/8 [370.0]	141 [358.1]	136 3/8 [346.4]	
10RL9	10RM9	10RLC9	10RH9	10TL9	10TM9	10TLC9	10TH9	139 3/4 [355.0]	146 7/8 [373.1]	147 [373.4]	149 5/8 [380.0]	148 1/2 [377.2]	143 7/8 [365.4]	

If Gagecock vessel center to center dimension is known:

- Find the dimension column matching desired gagecock series and connection type (example: 220, (F) union connections)
- Follow this column down to the dimension closest to required vessel center to center dimension without exceeding this dimension.
- Follow this row to the left to the GAGE MODEL NUMBER column of the style of gage required.
This represents the largest size gage meeting the required gagecock vessel center to center dimension.

If Gage model number is known:

- Find gage model under the GAGE MODEL NUMBER column.
- Follow that row to the right to the dimension column matching gagecock series and connection type (example: 220; (F) union connections)
This represents the minimum required gagecock vessel center to center for the model of gage selected.



Model 130 Gagecock Shown

PENBERTHY dimensions

Section 2000
Dimensions 2701.2
Issued 04/09
Replaces 07/05

For: **MINIMUM GAGECOCK CENTERS**

**Series L, M, H and LC Gages with
Series 100, 200, 300 and 400 Gagecocks**

FOR 3/4" END CONNECTED GAGES ONLY

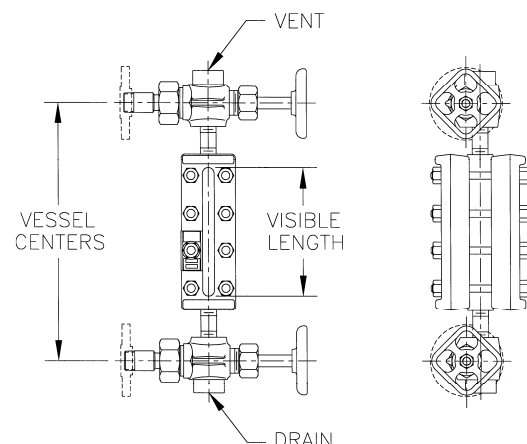
Gage Model Number								Visible Glass inches & [cm]	MINIMUM GAGECOCK VESSEL CENTERS IN INCHES [CM]			
									3/4" NPT GAGE CONNECTION			
REFLEX				TRANSPARENT				Standard (F) Union	Optional (M) Union	Optional (M) Spherical Union	Standard (F) Rigid	
RL	RM	RLC	RH	TL	TM	TLC	TH					
1RL1	1RM1			1TL1	1TM1			3 3/4 [9.5]	11 3/8 [28.9]	11 [27.9]	12 1/2 [31.8]	8 3/8 [21.3]
1RL2	1RM2			1TL2	1TM2			4 3/4 [12.1]	12 3/8 [31.4]	12 [30.5]	13 1/2 [34.3]	9 3/8 [23.8]
1RL3	1RM3			1TL3	1TM3			5 3/4 [14.6]	13 3/8 [34.0]	13 [33.0]	14 1/2 [36.8]	10 3/8 [26.4]
1RL4	1RM4	1RLC4	1RH4	1TL4	1TM4	1TLC4	1TH4	6 3/4 [17.1]	14 3/8 [36.5]	14 [35.6]	15 1/2 [39.4]	11 3/8 [28.9]
1RL5	1RM5	1RLC5	1RH5	1TL5	1TM5	1TLC5	1TH5	7 7/8 [20.0]	15 1/2 [39.4]	15 1/8 [38.4]	16 5/8 [42.2]	12 1/2 [31.8]
1RL6	1RM6	1RLC6	1RH6	1TL6	1TM6	1TLC6	1TH6	9 1/8 [23.2]	16 3/4 [42.5]	16 3/8 [41.6]	17 7/8 [45.4]	13 3/4 [34.9]
1RL7	1RM7	1RLC7	1RH7	1TL7	1TM7	1TLC7	1TH7	10 1/4 [26.0]	17 7/8 [45.4]	17 1/2 [44.5]	19 [48.3]	14 7/8 [37.8]
1RL8	1RM8	1RLC8	1RH8	1TL8	1TM8	1TLC8	1TH8	11 7/8 [30.2]	19 1/2 [49.5]	19 1/8 [48.6]	20 5/8 [52.4]	16 1/2 [41.9]
1RL9	1RM9	1RLC9	1RH9	1TL9	1TM9	1TLC9	1TH9	12 5/8 [32.1]	20 1/4 [51.4]	19 7/8 [50.5]	21 3/8 [54.3]	17 1/4 [43.8]
2RL4	2RM4	2RLC4	2RH4	2TL4	2TM4	2TLC4	2TH4	15 [38.1]	22 5/8 [57.5]	22 1/4 [56.5]	23 3/4 [60.3]	19 5/8 [49.8]
2RL5	2RM5	2RLC5	2RH5	2TL5	2TM5	2TLC5	2TH5	17 1/4 [43.8]	24 7/8 [63.2]	24 1/2 [62.2]	26 [66.0]	21 7/8 [55.6]
2RL6	2RM6	2RLC6	2RH6	2TL6	2TM6	2TLC6	2TH6	19 3/4 [50.2]	27 3/8 [69.5]	27 [68.6]	28 1/2 [72.4]	24 3/8 [61.9]
2RL7	2RM7	2RLC7	2RH7	2TL7	2TM7	2TLC7	2TH7	22 [55.9]	29 5/8 [75.2]	29 1/4 [74.3]	30 3/4 [78.1]	26 5/8 [67.6]
2RL8	2RM8	2RLC8	2RH8	2TL8	2TM8	2TLC8	2TH8	25 1/4 [64.1]	32 7/8 [83.5]	32 1/2 [82.6]	34 [86.4]	29 7/8 [75.9]
2RL9	2RM9	2RLC9	2RH9	2TL9	2TM9	2TLC9	2TH9	26 3/4 [67.9]	34 3/8 [87.3]	34 [86.4]	35 1/2 [90.2]	31 3/8 [79.7]
3RL6	3RM6	3RLC6	3RH6	3TL6	3TM6	3TLC6	3TH6	30 3/8 [77.2]	38 [96.5]	37 5/8 [95.6]	39 1/8 [99.4]	35 [88.9]
3RL7	3RM7	3RLC7	3RH7	3TL7	3TM7	3TLC7	3TH7	33 3/4 [85.7]	41 3/8 [105.1]	41 [104.1]	42 1/2 [108.0]	38 3/8 [97.5]
3RL8	3RM8	3RLC8	3RH8	3TL8	3TM8	3TLC8	3TH8	38 5/8 [98.1]	46 1/4 [117.5]	45 7/8 [116.5]	47 3/8 [120.3]	43 1/4 [109.9]
3RL9	3RM9	3RLC9	3RH9	3TL9	3TM9	3TLC9	3TH9	40 7/8 [103.8]	48 1/2 [123.2]	48 1/8 [122.2]	49 5/8 [126.0]	45 1/2 [115.6]
4RL7	4RM7	4RLC7	4RH7	4TL7	4TM7	4TLC7	4TH7	45 1/2 [115.6]	53 1/8 [134.9]	52 3/4 [134.0]	54 1/4 [137.8]	50 1/8 [127.3]
4RL8	4RM8	4RLC8	4RH8	4TL8	4TM8	4TLC8	4TH8	52 [132.1]	59 5/8 [151.4]	59 1/4 [150.5]	60 3/4 [154.3]	56 5/8 [143.8]
4RL9	4RM9	4RLC9	4RH9	4TL9	4TM9	4TLC9	4TH9	55 [139.7]	62 5/8 [159.1]	62 1/4 [158.1]	63 3/4 [161.9]	59 5/8 [151.4]
5RL7	5RM7	5RLC7	5RH7	5TL7	5TM7	5TLC7	5TH7	57 1/4 [145.4]	64 7/8 [164.8]	64 1/2 [163.8]	66 [167.6]	61 7/8 [157.2]
5RL8	5RM8	5RLC8	5RH8	5TL8	5TM8	5TLC8	5TH8	65 3/8 [166.1]	73 [185.4]	72 5/8 [184.5]	74 1/8 [188.3]	70 [177.8]
5RL9	5RM9	5RLC9	5RH9	5TL9	5TM9	5TLC9	5TH9	69 1/8 [175.6]	76 3/4 [194.9]	76 3/8 [194.0]	77 7/8 [197.8]	73 3/4 [187.3]
6RL8	6RM8	6RLC8	6RH8	6TL8	6TM8	6TLC8	6TH8	78 3/4 [200.0]	86 3/8 [219.4]	86 [218.4]	87 1/2 [222.3]	83 3/8 [211.8]
6RL9	6RM9	6RLC9	6RH9	6TL9	6TM9	6TLC9	6TH9	83 1/4 [211.5]	90 7/8 [230.8]	90 1/2 [229.9]	92 [233.7]	87 7/8 [223.2]
7RL8	7RM8	7RLC8	7RH8	7TL8	7TM8	7TLC8	7TH8	92 1/8 [234.0]	99 3/4 [253.4]	99 3/8 [252.4]	100 7/8 [256.2]	96 3/4 [245.7]
7RL9	7RM9	7RLC9	7RH9	7TL9	7TM9	7TLC9	7TH9	97 3/8 [247.3]	105 [266.7]	104 5/8 [265.7]	106 1/8 [269.6]	102 [259.1]
8RL8	8RM8	8RLC8	8RH8	8TL8	8TM8	8TLC8	8TH8	105 1/2 [268.0]	113 1/8 [287.3]	112 3/4 [286.4]	114 1/4 [290.2]	110 1/8 [279.7]
8RL9	8RM9	8RLC9	8RH9	8TL9	8TM9	8TLC9	8TH9	111 1/2 [283.2]	119 1/8 [302.6]	118 3/4 [301.6]	120 1/4 [305.4]	116 1/8 [295.0]
9RL8	9RM8	9RLC8	9RH8	9TL8	9TM8	9TLC8	9TH8	118 7/8 [301.9]	126 1/2 [321.3]	126 1/8 [320.4]	127 5/8 [324.2]	123 1/2 [313.7]
9RL9	9RM9	9RLC9	9RH9	9TL9	9TM9	9TLC9	9TH9	125 5/8 [319.1]	133 1/4 [338.5]	132 7/8 [337.5]	134 3/8 [341.3]	130 1/4 [330.8]
10RL8	10RM8	10RLC8	10RH8	10TL8	10TM8	10TLC8	10TH8	132 1/4 [335.9]	139 7/8 [355.3]	139 1/2 [354.3]	141 [358.1]	136 7/8 [347.7]
10RL9	10RM9	10RLC9	10RH9	10TL9	10TM9	10TLC9	10TH9	139 3/4 [355.0]	147 3/8 [374.3]	147 [373.4]	148 1/2 [377.2]	144 3/8 [366.7]

If Gagecock vessel center to center dimension is known:

- Find the dimension column matching desired gagecock series and connection type (example: 220, (F) union connections)
- Follow this column down to the dimension closest to required vessel center to center dimension without exceeding this dimension.
- Follow this row to the left to the GAGE MODEL NUMBER column of the style of gage required.
This represents the largest size gage meeting the required gagecock vessel center to center dimension.

If Gage model number is known:

- Find gage model under the GAGE MODEL NUMBER column.
- Follow that row to the right to the dimension column matching gagecock series and connection type (example: 220; (F) union connections)
This represents the minimum required gagecock vessel center to center for the model of gage selected.



Model 330 Gagecock Shown

PENBERTHY dimensions

Section 2000
Dimensions 2701.3
Issued 04/09
Replaces 07/05

For: **MINIMUM GAGECOCK CENTERS**

**Series M, H and LC Gages with
Series 500 and 700 Gagecocks**

FOR 1/2" END CONNECTED GAGES ONLY

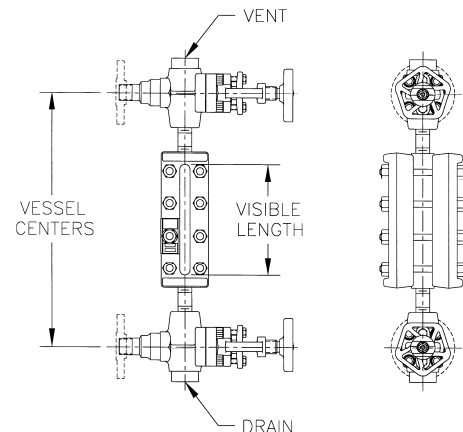
Gage Model Number						Visible Glass inches & [cm]	MINIMUM GAGECOCK VESSEL CENTERS IN INCHES [CM]				
							1/2" NPT GAGE CONNECTION				
							Standard (F) Union	Optional (M) Union	Optional (F) Spherical Union	Optional (M) Spherical Union	Standard (F) Rigid
REFLEX		TRANSPARENT				520, 720					
RM	RLC	RH	TM	TLC	TH	Gagecock with Nipples	Gagecock	Gagecock with Nipples	Gagecock	Gagecock with Nipples	
1RM1			1TM1			3 3/4 [9.5]	11 5/8 [29.5]	11 3/4 [29.8]	14 3/8 [36.5]	13 1/4 [33.7]	9 5/8 [24.4]
1RM2			1TM2			4 3/4 [12.1]	12 5/8 [32.1]	12 3/4 [32.4]	15 3/8 [39.1]	14 1/4 [36.2]	10 5/8 [27.0]
1RM3			1TM3			5 3/4 [14.6]	13 5/8 [34.6]	13 3/4 [34.9]	16 3/8 [41.6]	15 1/4 [38.7]	11 5/8 [29.5]
1RM4	1RLC4	1RH4	1TM4	1TLC4	1TH4	6 3/4 [17.1]	14 5/8 [37.1]	14 3/4 [37.5]	17 3/8 [44.1]	16 1/4 [41.3]	12 5/8 [32.1]
1RM5	1RLC5	1RH5	1TM5	1TLC5	1TH5	7 7/8 [20.0]	15 3/4 [40.0]	15 7/8 [42.9]	18 1/2 [47.0]	17 3/8 [44.1]	13 3/4 [34.9]
1RM6	1RLC6	1RH6	1TM6	1TLC6	1TH6	9 1/8 [23.2]	17 [43.2]	17 1/8 [43.5]	19 3/4 [50.2]	18 5/8 [47.3]	15 [38.1]
1RM7	1RLC7	1RH7	1TM7	1TLC7	1TH7	10 1/4 [26.0]	18 1/8 [46.0]	18 1/4 [46.4]	20 7/8 [53.0]	19 3/4 [50.2]	16 1/8 [41.0]
1RM8	1RLC8	1RH8	1TM8	1TLC8	1TH8	11 7/8 [30.2]	19 3/4 [50.2]	19 7/8 [50.5]	22 1/2 [57.2]	21 3/8 [54.3]	17 3/4 [45.1]
1RM9	1RLC9	1RH9	1TM9	1TLC9	1TH9	12 5/8 [32.1]	20 1/2 [52.1]	20 5/8 [52.4]	23 1/4 [59.1]	22 1/8 [56.2]	18 1/2 [47.0]
2RM4	2RLC4	2RH4	2TM4	2TLC4	2TH4	15 [38.1]	22 7/8 [58.1]	23 [58.4]	25 5/8 [65.1]	24 1/2 [62.2]	20 7/8 [53.0]
2RM5	2RLC5	2RH5	2TM5	2TLC5	2TH5	17 1/4 [43.8]	25 1/8 [63.8]	25 1/4 [64.1]	27 7/8 [70.8]	26 3/4 [67.9]	23 1/8 [58.7]
2RM6	2RLC6	2RH6	2TM6	2TLC6	2TH6	19 3/4 [50.2]	27 5/8 [70.2]	27 3/4 [70.5]	30 3/8 [77.2]	29 1/4 [74.3]	25 5/8 [65.1]
2RM7	2RLC7	2RH7	2TM7	2TLC7	2TH7	22 [55.9]	29 7/8 [75.9]	30 [76.2]	32 5/8 [82.9]	31 1/2 [80.0]	27 7/8 [70.8]
2RM8	2RLC8	2RH8	2TM8	2TLC8	2TH8	25 1/4 [64.1]	33 1/8 [84.1]	33 1/4 [84.5]	35 7/8 [91.1]	34 3/4 [88.3]	31 1/8 [79.1]
2RM9	2RLC9	2RH9	2TM9	2TLC9	2TH9	26 3/4 [67.9]	34 5/8 [87.9]	34 3/4 [88.3]	37 3/8 [94.9]	36 1/4 [92.1]	32 5/8 [82.9]
3RM6	3RLC6	3RH6	3TM6	3TLC6	3TH6	30 3/8 [77.2]	38 1/4 [97.2]	38 3/8 [97.5]	41 [104.1]	39 7/8 [101.3]	36 1/4 [92.1]
3RM7	3RLC7	3RH7	3TM7	3TLC7	3TH7	33 3/4 [85.7]	41 5/8 [105.7]	41 3/4 [106.0]	44 3/8 [112.7]	43 1/4 [109.9]	39 5/8 [100.6]
3RM8	3RLC8	3RH8	3TM8	3TLC8	3TH8	38 5/8 [98.1]	46 1/2 [118.1]	46 5/8 [118.4]	49 1/4 [125.1]	48 1/8 [122.2]	44 1/2 [113.0]
3RM9	3RLC9	3RH9	3TM9	3TLC9	3TH9	40 7/8 [103.8]	48 3/4 [123.8]	48 7/8 [124.1]	51 1/2 [130.8]	50 3/8 [128.0]	46 3/4 [118.7]
4RM7	4RLC7	4RH7	4TM7	4TLC7	4TH7	45 1/2 [115.6]	53 3/8 [135.6]	53 1/2 [135.9]	56 1/8 [142.6]	55 [139.7]	51 3/8 [130.5]
4RM8	4RLC8	4RH8	4TM8	4TLC8	4TH8	52 [132.1]	59 7/8 [152.1]	60 [152.4]	62 5/8 [159.1]	61 1/2 [156.2]	57 7/8 [147.0]
4RM9	4RLC9	4RH9	4TM9	4TLC9	4TH9	55 [139.7]	62 7/8 [159.7]	63 [160.0]	65 5/8 [166.7]	64 1/2 [163.8]	60 7/8 [154.6]
5RM7	5RLC7	5RH7	5TM7	5TLC7	5TH7	57 1/4 [145.4]	65 1/8 [165.4]	65 1/4 [165.7]	67 7/8 [172.4]	66 3/4 [169.5]	63 1/8 [160.3]
5RM8	5RLC8	5RH8	5TM8	5TLC8	5TH8	65 3/8 [166.1]	73 1/4 [186.1]	73 3/8 [186.4]	76 [193.0]	74 7/8 [190.2]	71 1/4 [181.0]
5RM9	5RLC9	5RH9	5TM9	5TLC9	5TH9	69 1/8 [175.6]	77 [195.6]	77 1/8 [195.9]	79 3/4 [202.6]	78 5/8 [199.7]	75 [190.5]
6RM8	6RLC8	6RH8	6TM8	6TLC8	6TH8	78 3/4 [200.0]	86 5/8 [220.0]	86 3/4 [220.3]	89 3/8 [227.0]	88 1/4 [224.2]	84 5/8 [215.0]
6RM9	6RLC9	6RH9	6TM9	6TLC9	6TH9	83 1/4 [211.5]	91 1/8 [236.5]	91 1/4 [231.8]	93 7/8 [238.4]	92 3/4 [235.6]	89 1/8 [226.4]
7RM8	7RLC8	7RH8	7TM8	7TLC8	7TH8	92 1/8 [234.0]	100 [254.0]	100 1/8 [254.3]	102 3/4 [261.0]	101 5/8 [258.1]	98 [248.9]
7RM9	7RLC9	7RH9	7TM9	7TLC9	7TH9	97 3/8 [247.3]	105 1/4 [267.3]	105 3/8 [267.7]	108 [274.3]	106 7/8 [271.5]	103 1/4 [262.3]
8RM8	8RLC8	8RH8	8TM8	8TLC8	8TH8	105 1/2 [268.0]	113 3/8 [288.0]	113 1/2 [288.3]	116 1/8 [295.0]	115 [292.1]	111 3/8 [282.9]
8RM9	8RLC9	8RH9	8TM9	8TLC9	8TH9	111 1/2 [283.2]	119 3/8 [303.2]	119 1/2 [303.5]	122 1/8 [310.2]	121 [307.3]	117 3/8 [298.1]
9RM8	9RLC8	9RH8	9TM8	9TLC8	9TH8	118 7/8 [301.9]	126 3/4 [321.9]	126 7/8 [322.3]	129 1/2 [328.9]	128 3/8 [326.1]	124 3/4 [316.9]
9RM9	9RLC9	9RH9	9TM9	9TLC9	9TH9	125 5/8 [319.1]	133 1/2 [339.1]	133 5/8 [339.4]	136 1/4 [346.1]	135 1/8 [343.2]	131 1/2 [334.0]
10RM8	10RLC8	10RH8	10TM8	10TLC8	10TH8	132 1/4 [335.9]	140 1/8 [355.9]	140 1/4 [356.2]	142 7/8 [362.9]	141 3/4 [360.0]	138 1/8 [350.8]
10RM9	10RLC9	10RH9	10TM9	10TLC9	10TH9	139 3/4 [355.0]	147 5/8 [375.0]	147 3/4 [375.3]	150 3/8 [382.0]	149 1/4 [379.1]	145 5/8 [369.9]

If Gagecock vessel center to center dimension is known:

- Find the dimension column matching desired gagecock series and connection type (example: 520, (F) union connections)
- Follow this column down to the dimension closest to required vessel center to center dimension without exceeding this dimension.
- Follow this row to the left to the GAGE MODEL NUMBER column of the style of gage required.
This represents the largest size gage meeting the required gagecock vessel center to center dimension.

If Gage model number is known:

- Find gage model under the GAGE MODEL NUMBER column.
- Follow that row to the right to the dimension column matching gagecock series and connection type (example: 520; (F) union connections)
This represents the minimum required gagecock vessel center to center for the model of gage selected.



Model 530 Gagecock Shown

PENBERTHY dimensions

Section 2000
Dimensions 2701.4
Issued 04/09
Replaces 07/05

For: **MINIMUM GAGECOCK CENTERS**

**Series M, H and LC Gages with
Series 500 and 700 Gagecocks**

FOR 3/4" END CONNECTED GAGES ONLY

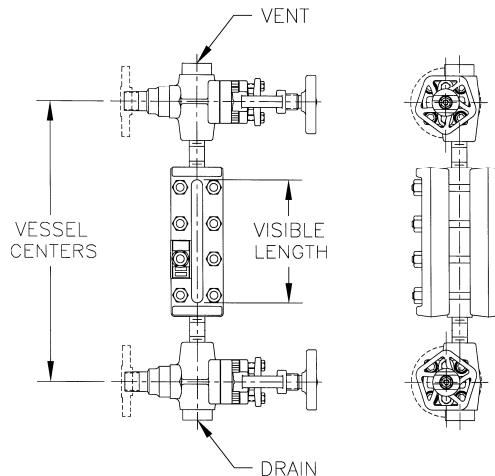
Gage Model Number						Visible Glass in ches & [cm]	MINIMUM GAGECOCK VESSEL CENTERS IN INCHES [CM]			
							3/4" NPT GAGE CONNECTION			
Reflex		Transparent					Standard (F) Union	Optional (M) Union	Optional (M) Spherical Union	Standard (F) Rigid
RM	RLC	RH	TM	TLC	TH		520, 720	520, 720	520, 720	530, 730
							Gagecock with Nipples	Gagecock	Gagecock	Gagecock with Nipples
1RM1			1TM1			3 3/4 [9.5]	12 1/8 [30.8]	11 3/4 [29.8]	13 1/4 [33.7]	10 1/8 [25.7]
1RM2			1TM2			4 3/4 [12.1]	13 1/8 [33.3]	12 3/4 [32.4]	14 1/4 [36.2]	11 1/8 [28.3]
1RM3			1TM3			5 3/4 [14.6]	14 1/8 [35.9]	13 3/4 [34.9]	15 1/4 [38.7]	12 1/8 [30.8]
1RM4	1RLC4	1RH4	1TM4	1TLC4	1TH4	6 3/4 [17.1]	15 1/8 [38.4]	14 3/4 [37.5]	16 1/4 [41.3]	13 1/8 [33.3]
1RM5	1RLC5	1RH5	1TM5	1TLC5	1TH5	7 7/8 [20.0]	16 1/4 [41.3]	15 7/8 [40.3]	17 3/8 [44.1]	14 1/4 [36.2]
1RM6	1RLC6	1RH6	1TM6	1TLC6	1TH6	9 1/8 [23.2]	17 1/2 [44.5]	17 1/8 [43.5]	18 5/8 [47.3]	15 1/2 [39.4]
1RM7	1RLC7	1RH7	1TM7	1TLC7	1TH7	10 1/4 [26.0]	18 5/8 [47.3]	18 1/4 [46.4]	19 3/4 [50.2]	16 5/8 [42.2]
1RM8	1RLC8	1RH8	1TM8	1TLC8	1TH8	11 7/8 [30.2]	20 1/4 [51.4]	19 7/8 [50.5]	21 3/8 [54.3]	18 1/4 [46.4]
1RM9	1RLC9	1RH9	1TM9	1TLC9	1TH9	12 5/8 [32.1]	21 [53.3]	20 5/8 [52.4]	22 1/8 [56.2]	19 [48.3]
2RM4	2RLC4	2RH4	2TM4	2TLC4	2TH4	15 [38.1]	23 3/8 [59.4]	23 [58.4]	24 1/2 [62.2]	21 3/8 [54.3]
2RM5	2RLC5	2RH5	2TM5	2TLC5	2TH5	17 1/4 [43.8]	25 5/8 [65.1]	25 1/4 [64.1]	26 3/4 [67.9]	23 5/8 [60.0]
2RM6	2RLC6	2RH6	2TM6	2TLC6	2TH6	19 3/4 [50.2]	28 1/8 [71.4]	27 3/4 [70.5]	29 1/4 [74.3]	26 1/8 [66.4]
2RM7	2RLC7	2RH7	2TM7	2TLC7	2TH7	22 [55.9]	30 3/8 [77.2]	30 [76.2]	31 1/2 [80.0]	28 3/8 [72.1]
2RM8	2RLC8	2RH8	2TM8	2TLC8	2TH8	25 1/4 [64.1]	33 5/8 [85.4]	33 1/4 [84.5]	34 3/4 [88.3]	31 5/8 [80.3]
2RM9	2RLC9	2RH9	2TM9	2TLC9	2TH9	26 3/4 [67.9]	35 1/8 [89.2]	34 3/4 [88.3]	36 1/4 [92.1]	33 1/8 [84.1]
3RM6	3RLC6	3RH6	3TM6	3TLC6	3TH6	30 3/8 [77.2]	38 3/4 [98.4]	38 3/8 [97.5]	39 7/8 [101.3]	36 3/4 [93.3]
3RM7	3RLC7	3RH7	3TM7	3TLC7	3TH7	33 3/4 [85.7]	42 1/8 [107.0]	41 3/4 [106.0]	43 1/4 [109.9]	40 1/8 [101.9]
3RM8	3RLC8	3RH8	3TM8	3TLC8	3TH8	38 5/8 [98.1]	47 [119.4]	46 5/8 [118.4]	48 1/8 [122.2]	45 [114.3]
3RM9	3RLC9	3RH9	3TM9	3TLC9	3TH9	40 7/8 [103.8]	49 1/4 [125.1]	48 7/8 [124.1]	50 3/8 [128.0]	47 1/4 [120.0]
4RM7	4RLC7	4RH7	4TM7	4TLC7	4TH7	45 1/2 [115.6]	53 7/8 [136.8]	53 1/2 [135.9]	55 [139.7]	51 7/8 [131.8]
4RM8	4RLC8	4RH8	4TM8	4TLC8	4TH8	52 [132.1]	60 3/8 [153.4]	60 [152.4]	61 1/2 [156.2]	58 3/8 [148.3]
4RM9	4RLC9	4RH9	4TM9	4TLC9	4TH9	55 [139.7]	63 3/8 [161.0]	63 [160.0]	64 1/2 [163.8]	61 3/8 [155.9]
5RM7	5RLC7	5RH7	5TM7	5TLC7	5TH7	57 1/4 [145.4]	65 5/8 [166.7]	65 1/4 [165.7]	66 3/4 [169.5]	63 5/8 [161.6]
5RM8	5RLC8	5RH8	5TM8	5TLC8	5TH8	65 3/8 [166.1]	73 3/4 [187.3]	73 3/8 [186.4]	74 7/8 [190.2]	71 3/4 [182.2]
5RM9	5RLC9	5RH9	5TM9	5TLC9	5TH9	69 1/8 [175.6]	77 1/2 [196.9]	77 1/8 [195.9]	78 5/8 [199.7]	75 1/2 [191.8]
6RM8	6RLC8	6RH8	6TM8	6TLC8	6TH8	78 3/4 [200.0]	87 1/8 [221.3]	86 3/4 [220.3]	88 1/4 [224.2]	85 1/8 [216.2]
6RM9	6RLC9	6RH9	6TM9	6TLC9	6TH9	83 1/4 [211.5]	91 5/8 [232.7]	91 1/4 [231.8]	92 3/4 [235.6]	89 5/8 [227.6]
7RM8	7RLC8	7RH8	7TM8	7TLC8	7TH8	92 1/8 [234.0]	100 1/2 [255.3]	100 1/8 [254.3]	101 5/8 [258.1]	98 1/2 [250.2]
7RM9	7RLC9	7RH9	7TM9	7TLC9	7TH9	97 3/8 [247.3]	105 3/4 [268.6]	105 3/8 [267.7]	106 7/8 [271.5]	103 3/4 [263.5]
8RM8	8RLC8	8RH8	8TM8	8TLC8	8TH8	105 1/2 [268.0]	113 7/8 [289.2]	113 1/2 [288.3]	115 [292.1]	111 7/8 [284.2]
8RM9	8RLC9	8RH9	8TM9	8TLC9	8TH9	111 1/2 [283.2]	119 7/8 [304.5]	119 1/2 [303.5]	121 [307.3]	117 7/8 [299.4]
9RM8	9RLC8	9RH8	9TM8	9TLC8	9TH8	118 7/8 [301.9]	127 1/4 [323.2]	126 7/8 [322.3]	128 3/8 [326.1]	125 1/4 [318.1]
9RM9	9RLC9	9RH9	9TM9	9TLC9	9TH9	125 5/8 [319.1]	134 [340.4]	133 5/8 [339.4]	135 1/8 [343.2]	132 [335.3]
10RM8	10RLC8	10RH8	10TM8	10TLC8	10TH8	132 1/4 [335.9]	140 5/8 [357.2]	140 1/4 [356.2]	141 3/4 [360.0]	138 5/8 [352.1]
10RM9	10RLC9	10RH9	10TM9	10TLC9	10TH9	139 3/4 [355.0]	148 1/8 [376.2]	147 3/4 [375.3]	149 1/4 [379.1]	146 1/8 [371.2]

If Gagecock vessel center to center dimension is known:

- Find the dimension column matching desired gagecock series and connection type (example: 520, (F) union connections)
- Follow this column down to the dimension closest to required vessel center to center dimension without exceeding this dimension.
- Follow this row to the left to the GAGE MODEL NUMBER column of the style of gage required.
This represents the largest size gage meeting the required gagecock vessel center to center dimension.

If Gage model number is known:

- Find gage model under the GAGE MODEL NUMBER column.
- Follow that row to the right to the dimension column matching gagecock series and connection type (example: 520; (F) union connections)
This represents the minimum required gagecock vessel center to center for the



Model 730 Gagecock Shown

PENBERTHY dimensions

Section 2000
Dimensions 2701.5
Issued 04/09
Replaces NEW

For: **MINIMUM GAGECOCK CENTERS**

**Series M or H Recessed Gages with
Series 100, 200, 300 and 400 Gagecocks**

FOR 1/2" END CONNECTED GAGES ONLY

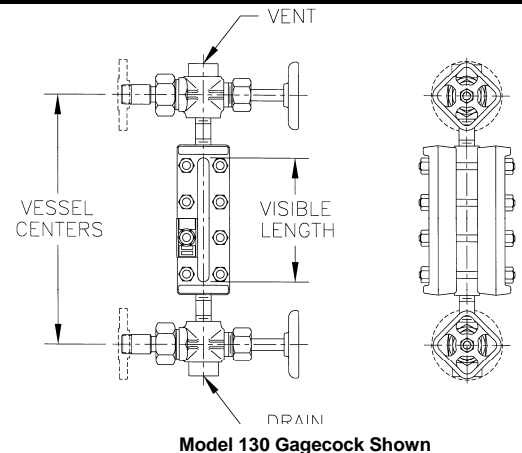
Gage Model Number				Visible Glass inches & [cm]	MINIMUM GAGECOCK VESSEL CENTERS IN INCHES [CM]				
					1/2" NPT GAGE CONNECTION				
					Standard (F) Union	Optional (M) Union	Optional (F) Spherical Union	Optional (M) Spherical Union	Standard (F) Rigid
				120, 220, 320, 420					130, 230, 330, 430
REFLEX		TRANSPARENT							
RMR	RHR	TMR	THR	Gagecock with Nipples	Gagecock	Gagecock with Nipples	Gagecock	Gagecock with Nipples	
1RMR1		1TMR1		3 3/4 [9.5]	10 7/8 [27.6]	11 [27.9]	13 5/8 [34.6]	12 1/2 [31.8]	7 7/8 [20.0]
1RMR2		1TMR2		4 3/4 [12.1]	11 7/8 [30.1]	12 [30.5]	14 5/8 [37.1]	13 1/2 [34.3]	8 7/8 [22.5]
1RMR3		1TMR3		5 3/4 [14.6]	12 7/8 [32.7]	13 [33.0]	15 5/8 [39.7]	14 1/2 [36.8]	9 7/8 [25.1]
1RMR4	1RHR4	1TMR4	1THR4	6 3/4 [17.1]	13 7/8 [35.2]	14 [35.6]	16 5/8 [42.2]	15 1/2 [39.4]	10 7/8 [27.6]
1RMR5	1RHR5	1TMR5	1THR5	7 7/8 [20.0]	15 [38.1]	15 1/8 [38.4]	17 3/4 [45.1]	16 5/8 [42.2]	12 [30.5]
1RMR6	1RHR6	1TMR6	1THR6	9 1/8 [23.2]	16 1/4 [41.3]	16 3/8 [41.6]	19 [48.3]	17 7/8 [45.4]	13 1/4 [33.7]
1RMR7	1RHR7	1TMR7	1THR7	10 1/4 [26.0]	17 3/8 [44.1]	17 1/2 [44.5]	20 1/8 [51.1]	19 [48.3]	14 3/8 [36.5]
1RMR8	1RHR8	1TMR8	1THR8	11 7/8 [30.2]	19 [48.3]	19 1/8 [48.6]	21 3/4 [55.2]	20 5/8 [52.4]	16 [40.6]
1RMR9	1RHR9	1TMR9	1THR9	12 5/8 [32.1]	19 3/4 [50.2]	19 7/8 [50.5]	22 1/2 [57.2]	21 3/8 [54.3]	16 3/4 [42.5]
2RMR4	2RHR4	2TMR4	2THR4	15 [38.1]	22 1/8 [56.2]	22 1/4 [56.5]	24 7/8 [63.2]	23 3/4 [60.3]	19 1/8 [48.6]
2RMR5	2RHR5	2TMR5	2THR5	17 1/4 [43.8]	24 3/8 [61.9]	24 1/2 [62.2]	27 1/8 [68.9]	26 [66.0]	21 3/8 [54.3]
2RMR6	2RHR6	2TMR6	2THR6	19 3/4 [50.2]	26 7/8 [68.3]	27 [68.6]	29 5/8 [75.2]	28 1/2 [72.4]	23 7/8 [60.6]
2RMR7	2RHR7	2TMR7	2THR7	22 [55.9]	29 1/8 [74.0]	29 1/4 [74.3]	31 7/8 [81.0]	30 3/4 [78.1]	26 1/8 [66.4]
2RMR8	2RHR8	2TMR8	2THR8	25 1/4 [64.1]	32 3/8 [82.2]	32 1/2 [82.6]	35 1/8 [89.2]	34 [86.4]	29 3/8 [74.6]
2RMR9	2RHR9	2TMR9	2THR9	26 3/4 [67.9]	33 7/8 [86.0]	34 [86.4]	36 5/8 [93.0]	35 1/2 [90.2]	30 7/8 [78.4]
3RMR6	3RHR6	3TMR6	3THR6	30 3/8 [77.2]	37 1/2 [95.3]	37 5/8 [95.6]	40 1/4 [102.2]	39 1/8 [99.4]	34 1/2 [87.6]
3RMR7	3RHR7	3TMR7	3THR7	33 3/4 [85.7]	40 7/8 [103.8]	41 [104.1]	43 5/8 [110.8]	42 1/2 [108.0]	37 7/8 [96.2]
3RMR8	3RHR8	3TMR8	3THR8	38 5/8 [98.1]	45 3/4 [116.2]	45 7/8 [116.5]	48 1/2 [123.2]	47 3/8 [120.3]	42 3/4 [108.6]
3RMR9	3RHR9	3TMR9	3THR9	40 7/8 [103.8]	48 [121.9]	48 1/8 [122.2]	50 3/4 [128.9]	49 5/8 [126.0]	45 [114.3]
4RMR7	4RHR7	4TMR7	4THR7	45 1/2 [115.6]	52 5/8 [133.7]	52 3/4 [134.0]	55 3/8 [140.7]	54 1/4 [137.8]	49 5/8 [126.0]
4RMR8	4RHR8	4TMR8	4THR8	52 [132.1]	59 1/8 [150.2]	59 1/4 [150.5]	61 7/8 [157.2]	60 3/4 [154.3]	56 1/8 [142.6]
4RMR9	4RHR9	4TMR9	4THR9	55 [139.7]	62 1/8 [157.8]	62 1/4 [158.1]	64 7/8 [164.8]	63 3/4 [161.9]	59 1/8 [150.2]
5RMR7	5RHR7	5TMR7	5THR7	57 1/4 [145.4]	64 3/8 [163.5]	64 1/2 [163.8]	67 1/8 [170.5]	66 [167.6]	61 3/8 [155.9]
5RMR8	5RHR8	5TMR8	5THR8	65 3/8 [166.1]	72 1/2 [184.2]	72 5/8 [184.5]	75 1/4 [191.1]	74 1/8 [188.3]	69 1/2 [176.5]
5RMR9	5RHR9	5TMR9	5THR9	69 1/8 [175.6]	76 1/4 [193.7]	76 3/8 [194.0]	79 [200.7]	77 7/8 [197.8]	73 1/4 [186.1]
6RMR8	6RHR8	6TMR8	6THR8	78 3/4 [200.0]	85 7/8 [218.1]	86 [218.4]	88 5/8 [225.1]	87 1/2 [222.3]	82 7/8 [210.5]
6RMR9	6RHR9	6TMR9	6THR9	83 1/4 [211.5]	90 3/8 [229.6]	90 1/2 [229.9]	93 1/8 [236.5]	92 [233.7]	87 3/8 [221.9]
7RMR8	7RHR8	7TMR8	7THR8	92 1/8 [234.0]	99 1/4 [252.1]	99 3/8 [252.4]	102 [259.1]	100 7/8 [256.2]	96 1/4 [244.5]
7RMR9	7RHR9	7TMR9	7THR9	97 3/8 [247.3]	104 1/2 [265.4]	104 5/8 [265.7]	107 1/4 [272.4]	106 1/8 [269.6]	101 1/2 [257.8]
8RMR8	8RHR8	8TMR8	8THR8	105 1/2 [268.0]	112 5/8 [286.1]	112 3/4 [286.4]	115 3/8 [293.1]	114 1/4 [290.2]	109 5/8 [278.4]
8RMR9	8RHR9	8TMR9	8THR9	111 1/2 [283.2]	118 5/8 [301.3]	118 3/4 [301.6]	121 3/8 [308.3]	120 1/4 [305.4]	115 5/8 [293.7]
9RMR8	9RHR8	9TMR8	9THR8	118 7/8 [301.9]	126 [320.0]	126 1/8 [320.4]	128 3/4 [327.0]	127 5/8 [324.2]	123 [312.4]
9RMR9	9RHR9	9TMR9	9THR9	125 5/8 [319.1]	132 3/4 [337.2]	132 7/8 [337.5]	135 1/2 [344.2]	134 3/8 [341.3]	129 3/4 [329.6]
10RMR8	10RHR8	10TMR8	10THR8	132 1/4 [335.9]	139 3/8 [354.0]	139 1/2 [354.3]	142 1/8 [370.0]	141 [358.1]	136 3/8 [346.4]
10RMR9	10RHR9	10TMR9	10THR9	139 3/4 [355.0]	146 7/8 [373.1]	147 [373.4]	149 5/8 [380.0]	148 1/2 [377.2]	143 7/8 [365.4]

If Gagecock vessel center to center dimension is known:

- Find the dimension column matching desired gagecock series and connection type (example: 220, (F) union connections)
- Follow this column down to the dimension closest to required vessel center to center dimension without exceeding this dimension.
- Follow this row to the left to the GAGE MODEL NUMBER column of the style of gage required.
This represents the largest size gage meeting the required gagecock vessel center to center dimension.

If Gage model number is known:

- Find gage model under the GAGE MODEL NUMBER column.
- Follow that row to the right to the dimension column matching gagecock series and connection type (example: 220; (F) union connections)
This represents the minimum required gagecock vessel center to center for the model of gage selected.



PENBERTHY dimensions

Section 2000
Dimensions 2701.6
Issued 04/09
Replaces NEW

For: **MINIMUM GAGECOCK CENTERS**

**Series M or H Recessed Gages with
Series 500 and 700 Gagecocks**

FOR 1/2" END CONNECTED GAGES ONLY

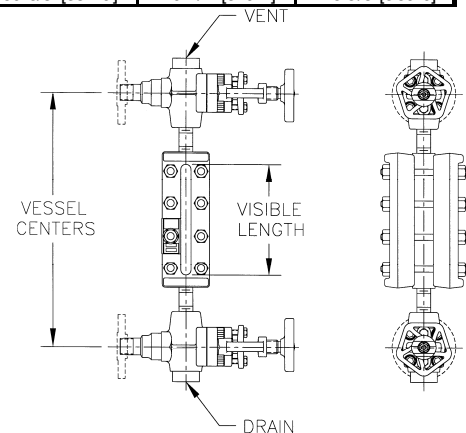
Gage Model Number				Visible Glass inches & [cm]	MINIMUM GAGECOCK VESSEL CENTERS IN INCHES [CM]				
					1/2" NPT GAGE CONNECTION				
					Standard (F) Union	Optional (M) Union	Optional (F) Spherical Union	Optional (M) Spherical Union	Standard (F) Rigid
REFLEX		TRANSPARENT			520, 720				
RMR	RHR	TMR	THR		Gagecock with Nipples	Gagecock	Gagecock with Nipples	Gagecock	Gagecock with Nipples
1RMR1		1TMR1		3 3/4 [9.5]	11 5/8 [29.5]	11 3/4 [29.8]	14 3/8 [36.5]	13 1/4 [33.7]	9 5/8 [24.4]
1RMR2		1TMR2		4 3/4 [12.1]	12 5/8 [32.1]	12 3/4 [32.4]	15 3/8 [39.1]	14 1/4 [36.2]	10 5/8 [27.0]
1RMR3		1TMR3		5 3/4 [14.6]	13 5/8 [34.6]	13 3/4 [34.9]	16 3/8 [41.6]	15 1/4 [38.7]	11 5/8 [29.5]
1RMR4	1RHR4	1TMR4	1THR4	6 3/4 [17.1]	14 5/8 [37.1]	14 3/4 [37.5]	17 3/8 [44.1]	16 1/4 [41.3]	12 5/8 [32.1]
1RMR5	1RHR5	1TMR5	1THR5	7 7/8 [20.0]	15 3/4 [40.0]	15 7/8 [42.9]	18 1/2 [47.0]	17 3/8 [44.1]	13 3/4 [34.9]
1RMR6	1RHR6	1TMR6	1THR6	9 1/8 [23.2]	17 [43.2]	17 1/8 [43.5]	19 3/4 [50.2]	18 5/8 [47.3]	15 [38.1]
1RMR7	1RHR7	1TMR7	1THR7	10 1/4 [26.0]	18 1/8 [46.0]	18 1/4 [46.4]	20 7/8 [53.0]	19 3/4 [50.2]	16 1/8 [41.0]
1RMR8	1RHR8	1TMR8	1THR8	11 7/8 [30.2]	19 3/4 [50.2]	19 7/8 [50.5]	22 1/2 [57.2]	21 3/8 [54.3]	17 3/4 [45.1]
1RMR9	1RHR9	1TMR9	1THR9	12 5/8 [32.1]	20 1/2 [52.1]	20 5/8 [52.4]	23 1/4 [59.1]	22 1/8 [56.2]	18 1/2 [47.0]
2RMR4	2RHR4	2TMR4	2THR4	15 [38.1]	22 7/8 [58.1]	23 [58.4]	25 5/8 [65.1]	24 1/2 [62.2]	20 7/8 [53.0]
2RMR5	2RHR5	2TMR5	2THR5	17 1/4 [43.8]	25 1/8 [63.8]	25 1/4 [64.1]	27 7/8 [70.8]	26 3/4 [67.9]	23 1/8 [58.7]
2RMR6	2RHR6	2TMR6	2THR6	19 3/4 [50.2]	27 5/8 [70.2]	27 3/4 [70.5]	30 3/8 [77.2]	29 1/4 [74.3]	25 5/8 [65.1]
2RMR7	2RHR7	2TMR7	2THR7	22 [55.9]	29 7/8 [75.9]	30 [76.2]	32 5/8 [82.9]	31 1/2 [80.0]	27 7/8 [70.8]
2RMR8	2RHR8	2TMR8	2THR8	25 1/4 [64.1]	33 1/8 [84.1]	33 1/4 [84.5]	35 7/8 [91.1]	34 3/4 [88.3]	31 1/8 [79.1]
2RMR9	2RHR9	2TMR9	2THR9	26 3/4 [67.9]	34 5/8 [87.9]	34 3/4 [88.3]	37 3/8 [94.9]	36 1/4 [92.1]	32 5/8 [82.9]
3RMR6	3RHR6	3TMR6	3THR6	30 3/8 [77.2]	38 1/4 [97.2]	38 3/8 [97.5]	41 [104.1]	39 7/8 [101.3]	36 1/4 [92.1]
3RMR7	3RHR7	3TMR7	3THR7	33 3/4 [85.7]	41 5/8 [105.7]	41 3/4 [106.0]	44 3/8 [112.7]	43 1/4 [109.9]	39 5/8 [100.6]
3RMR8	3RHR8	3TMR8	3THR8	38 5/8 [98.1]	46 1/2 [118.1]	46 5/8 [118.4]	49 1/4 [125.1]	48 1/8 [122.2]	44 1/2 [113.0]
3RMR9	3RHR9	3TMR9	3THR9	40 7/8 [103.8]	48 3/4 [123.8]	48 7/8 [124.1]	51 1/2 [130.8]	50 3/8 [128.0]	46 3/4 [118.7]
4RMR7	4RHR7	4TMR7	4THR7	45 1/2 [115.6]	53 3/8 [135.6]	53 1/2 [135.9]	56 1/8 [142.6]	55 [139.7]	51 3/8 [130.5]
4RMR8	4RHR8	4TMR8	4THR8	52 [132.1]	59 7/8 [152.1]	60 [152.4]	62 5/8 [159.1]	61 1/2 [156.2]	57 7/8 [147.0]
4RMR9	4RHR9	4TMR9	4THR9	55 [139.7]	62 7/8 [159.7]	63 [160.0]	65 5/8 [166.7]	64 1/2 [163.8]	60 7/8 [154.6]
5RMR7	5RHR7	5TMR7	5THR7	57 1/4 [145.4]	65 1/8 [165.4]	65 1/4 [165.7]	67 7/8 [172.4]	66 3/4 [169.5]	63 1/8 [160.3]
5RMR8	5RHR8	5TMR8	5THR8	65 3/8 [166.1]	73 1/4 [186.1]	73 3/8 [186.4]	76 [193.0]	74 7/8 [190.2]	71 1/4 [181.0]
5RMR9	5RHR9	5TMR9	5THR9	69 1/8 [175.6]	77 [195.6]	77 1/8 [195.9]	79 3/4 [202.6]	78 5/8 [199.7]	75 [190.5]
6RMR8	6RHR8	6TMR8	6THR8	78 3/4 [200.0]	86 5/8 [220.0]	86 3/4 [220.3]	89 3/8 [227.0]	88 1/4 [224.2]	84 5/8 [215.0]
6RMR9	6RHR9	6TMR9	6THR9	83 1/4 [211.5]	91 1/8 [236.5]	91 1/4 [231.8]	93 7/8 [238.4]	92 3/4 [235.6]	89 1/8 [226.4]
7RMR8	7RHR8	7TMR8	7THR8	92 1/8 [234.0]	100 [254.0]	100 1/8 [254.3]	102 3/4 [261.0]	101 5/8 [258.1]	98 [248.9]
7RMR9	7RHR9	7TMR9	7THR9	97 3/8 [247.3]	105 1/4 [267.3]	105 3/8 [267.7]	108 [274.3]	106 7/8 [271.5]	103 1/4 [262.3]
8RMR8	8RHR8	8TMR8	8THR8	105 1/2 [268.0]	113 3/8 [288.0]	113 1/2 [288.3]	116 1/8 [295.0]	115 [292.1]	111 3/8 [282.9]
8RMR9	8RHR9	8TMR9	8THR9	111 1/2 [283.2]	119 3/8 [303.2]	119 1/2 [303.5]	122 1/8 [310.2]	121 [307.3]	117 3/8 [298.1]
9RMR8	9RHR8	9TMR8	9THR8	118 7/8 [301.9]	126 3/4 [321.9]	126 7/8 [322.3]	129 1/2 [328.9]	128 3/8 [326.1]	124 3/4 [316.9]
9RMR9	9RHR9	9TMR9	9THR9	125 5/8 [319.1]	133 1/2 [339.1]	133 5/8 [339.4]	136 1/4 [346.1]	135 1/8 [343.2]	131 1/2 [334.0]
10RMR8	10RHR8	10TMR8	10THR8	132 1/4 [335.9]	140 1/8 [355.9]	140 1/4 [356.2]	142 7/8 [362.9]	141 3/4 [360.0]	138 1/8 [350.8]
10RMR9	10RHR9	10TMR9	10THR9	139 3/4 [355.0]	147 5/8 [375.0]	147 3/4 [375.3]	150 3/8 [382.0]	149 1/4 [379.1]	145 5/8 [369.9]

If Gagecock vessel center to center dimension is known:

- Find the dimension column matching desired gagecock series and connection type (example: 520, (F) union connections)
- Follow this column down to the dimension closest to required vessel center to center dimension without exceeding this dimension.
- Follow this row to the left to the GAGE MODEL NUMBER column of the style of gage required.
This represents the largest size gage meeting the required gagecock vessel center to center dimension.

If Gage model number is known:

- Find gage model under the GAGE MODEL NUMBER column.
- Follow that row to the right to the dimension column matching gagecock series and connection type (example: 520; (F) union connections)
This represents the minimum required gagecock vessel center to center for the model of gage selected.



Model 530 Gagecock Shown

PENBERTHY dimensions

Section 2000
Dimensions 2701.7
Issued 04/09
Replaces NEW

For: MINIMUM GAGECOCK CENTERS

Series M or H Recessed Gages with
Series 100, 200, 300 and 400 Gagecocks

FOR 3/4" END CONNECTED GAGES ONLY

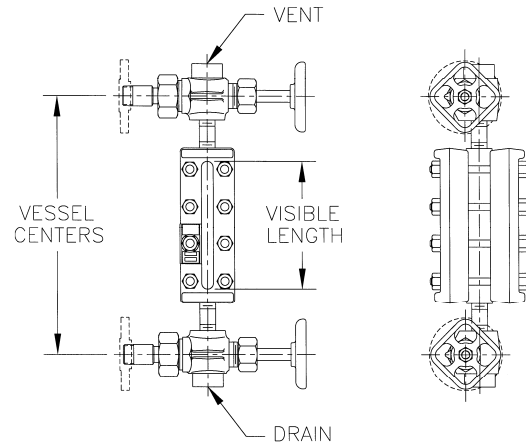
Gage Model Number				Visible Glass inches & [cm]	MINIMUM GAGECOCK VESSEL CENTERSTINCHES [CM]			
					3/4" NPT GAGE CONNECTION			
REFLEX		TRANSPARENT			Standard (F) Union	Optional (M) Union	Optional (M) Spherical Union	Standard (F) Rigid
RMR	RHR	TMR	THR		Gagecock with Nipples	Gagecock	Gagecock	Gagecock
1RMR1		1TMR1		3 3/4 [9.5]	12 1/8 [30.8]	11 3/4 [29.8]	13 1/4 [33.7]	9 1/8 [23.2]
1RMR2		1TMR2		4 3/4 [12.1]	13 1/8 [33.3]	12 3/4 [32.4]	14 1/4 [36.2]	10 1/8 [25.7]
1RMR3		1TMR3		5 3/4 [14.6]	14 1/8 [35.9]	13 3/4 [34.9]	15 1/4 [38.7]	11 1/8 [28.3]
1RMR4	1RHR4	1TMR4	1THR4	6 3/4 [17.1]	15 1/8 [38.4]	14 3/4 [37.5]	16 1/4 [41.3]	12 1/8 [30.8]
1RMR5	1RHR5	1TMR5	1THR5	7 7/8 [20.0]	16 1/4 [41.3]	15 7/8 [40.3]	17 3/8 [44.1]	13 1/4 [33.7]
1RMR6	1RHR6	1TMR6	1THR6	9 1/8 [23.2]	17 1/2 [44.5]	17 1/8 [43.5]	18 5/8 [47.3]	14 1/2 [36.8]
1RMR7	1RHR7	1TMR7	1THR7	10 1/4 [26.0]	18 5/8 [47.3]	18 1/4 [46.4]	19 3/4 [50.2]	15 5/8 [39.7]
1RMR8	1RHR8	1TMR8	1THR8	11 7/8 [30.2]	20 1/4 [51.4]	19 7/8 [50.5]	21 3/8 [54.3]	17 1/4 [43.8]
1RMR9	1RHR9	1TMR9	1THR9	12 5/8 [32.1]	21 [53.3]	20 5/8 [52.4]	22 1/8 [56.2]	18 [45.7]
2RMR4	2RHR4	2TMR4	2THR4	15 [38.1]	23 3/8 [59.4]	23 [58.4]	24 1/2 [62.2]	20 3/8 [51.8]
2RMR5	2RHR5	2TMR5	2THR5	17 1/4 [43.8]	25 5/8 [65.1]	25 1/4 [64.1]	26 3/4 [67.9]	22 5/8 [57.5]
2RMR6	2RHR6	2TMR6	2THR6	19 3/4 [50.2]	28 1/8 [71.4]	27 3/4 [70.5]	29 1/4 [74.3]	25 1/8 [63.8]
2RMR7	2RHR7	2TMR7	2THR7	22 [55.9]	30 3/8 [77.2]	30 [76.2]	31 1/2 [80.0]	27 3/8 [69.5]
2RMR8	2RHR8	2TMR8	2THR8	25 1/4 [64.1]	33 5/8 [85.4]	33 1/4 [84.5]	34 3/4 [88.3]	30 5/8 [77.8]
2RMR9	2RHR9	2TMR9	2THR9	26 3/4 [67.9]	35 1/8 [89.2]	34 3/4 [88.3]	36 1/4 [92.1]	32 1/8 [81.6]
3RMR6	3RHR6	3TMR6	3THR6	30 3/8 [77.2]	38 3/4 [98.4]	38 3/8 [97.5]	39 7/8 [101.3]	35 3/4 [90.8]
3RMR7	3RHR7	3TMR7	3THR7	33 3/4 [85.7]	42 1/8 [107.0]	41 3/4 [106.0]	43 1/4 [109.9]	39 1/8 [99.4]
3RMR8	3RHR8	3TMR8	3THR8	38 5/8 [98.1]	47 [119.4]	46 5/8 [118.4]	48 1/8 [122.6]	44 [111.8]
3RMR9	3RHR9	3TMR9	3THR9	40 7/8 [103.8]	49 1/4 [125.1]	48 7/8 [124.1]	50 3/8 [128.0]	46 1/4 [117.5]
4RMR7	4RHR7	4TMR7	4THR7	45 1/2 [115.6]	53 7/8 [136.8]	53 1/2 [135.9]	55 [139.7]	50 7/8 [129.2]
4RMR8	4RHR8	4TMR8	4THR8	52 [132.1]	60 3/8 [153.4]	60 [152.4]	61 1/2 [156.2]	57 3/8 [145.7]
4RMR9	4RHR9	4TMR9	4THR9	55 [139.7]	63 3/8 [161.0]	63 [160.0]	64 1/2 [163.8]	60 3/8 [153.4]
5RMR7	5RHR7	5TMR7	5THR7	57 1/4 [145.4]	65 5/8 [166.7]	65 1/4 [165.7]	66 3/4 [169.5]	62 5/8 [159.1]
5RMR8	5RHR8	5TMR8	5THR8	65 3/8 [166.1]	73 3/4 [187.3]	73 3/8 [186.4]	74 7/8 [190.2]	70 3/4 [179.7]
5RMR9	5RHR9	5TMR9	5THR9	69 1/8 [175.6]	77 1/2 [196.9]	77 1/8 [195.9]	78 5/8 [199.7]	74 1/2 [189.2]
6RMR8	6RHR8	6TMR8	6THR8	78 3/4 [200.0]	87 1/8 [221.3]	86 3/4 [220.1]	88 1/4 [224.2]	84 1/8 [213.7]
6RMR9	6RHR9	6TMR9	6THR9	83 1/4 [211.5]	91 5/8 [232.7]	91 1/4 [231.8]	92 3/4 [235.6]	88 5/8 [225.1]
7RMR8	7RHR8	7TMR8	7THR8	92 1/8 [234.0]	100 1/2 [255.3]	100 1/8 [254.3]	101 5/8 [258.1]	97 1/2 [247.7]
7RMR9	7RHR9	7TMR9	7THR9	97 3/8 [247.3]	105 3/4 [268.6]	105 3/8 [267.7]	106 7/8 [271.5]	102 3/4 [261.0]
8RMR8	8RHR8	8TMR8	8THR8	105 1/2 [268.0]	113 7/8 [289.2]	113 1/2 [288.3]	115 [292.1]	110 7/8 [281.6]
8RMR9	8RHR9	8TMR9	8THR9	111 1/2 [283.2]	119 7/8 [304.5]	119 1/2 [303.5]	121 [307.3]	116 7/8 [296.9]
9RMR8	9RHR8	9TMR8	9THR8	118 7/8 [301.9]	127 1/4 [323.2]	126 7/8 [322.3]	128 3/8 [326.1]	124 1/4 [315.6]
9RMR9	9RHR9	9TMR9	9THR9	125 5/8 [319.1]	134 [340.4]	133 5/8 [339.4]	135 1/8 [343.2]	131 [332.7]
10RMR8	10RHR8	10TMR8	10THR8	132 1/4 [335.9]	140 5/8 [357.2]	140 1/4 [356.2]	141 3/4 [360.0]	137 5/8 [349.6]
10RMR9	10RHR9	10TMR9	10THR9	139 3/4 [355.0]	148 1/8 [376.2]	147 3/4 [375.3]	149 1/4 [379.1]	145 1/8 [368.6]

If Gagecock vessel center to center dimension is known:

- Find the dimension column matching desired gagecock series and connection type (example: 220, (F) union connections)
- Follow this column down to the dimension closest to required vessel center to center dimension without exceeding this dimension.
- Follow this row to the left to the GAGE MODEL NUMBER column of the style of gage required.
This represents the largest size gage meeting the required gagecock vessel center to center dimension.

If Gage model number is known:

- Find gage model under the GAGE MODEL NUMBER column.
- Follow that row to the right to the dimension column matching gagecock series and connection type (example: 220; (F) union connections)
This represents the minimum required gagecock vessel center to center for the model of gage selected.



Model 330 Gagecock Shown

PENBERTHY dimensions

Section 2000
Dimensions 2701.8
Issued 04/09
Replaces NEW

For: **MINIMUM GAGECOCK CENTERS**

Series M or H Recessed Gages with
Series 500 and 700 Gagecocks

FOR 3/4" NPT END CONNECTED GAGES ONLY

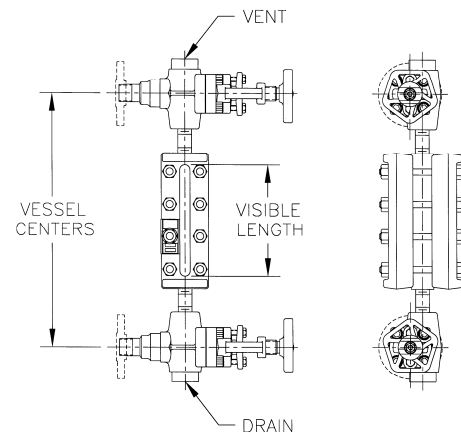
Gage Model Number				Visible Glass in ches & [cm]	MINIMUM GAGECOCK VESSEL CENTERS IN INCHES [CM]			
					3/4" NPT GAGE CONNECTION			
Reflex		Transparent			Standard (F) Union	Optional (M) Union	Optional (M) Spherical Union	Standard (F) Rigid
RMR	RHR	TMR	THR		Gagecock with Nipples	520, 720 Gagecock	Gagecock	530, 730 Gagecock with Nipples
1RMR1		1TMR1		3 3/4 [9.5]	12 7/8 [32.7]	12 1/2 [31.8]	14 [35.6]	10 7/8 [27.6]
1RMR2		1TMR2		4 3/4 [12.1]	13 7/8 [35.2]	13 1/2 [34.3]	15 [38.1]	11 7/8 [30.2]
1RMR3		1TMR3		5 3/4 [14.6]	14 7/8 [37.8]	14 1/2 [36.8]	16 [40.6]	12 7/8 [32.7]
1RMR4	1RHR4	1TMR4	1THR4	6 3/4 [17.1]	15 7/8 [40.3]	15 1/2 [39.4]	17 [43.2]	13 7/8 [35.2]
1RMR5	1RHR5	1TMR5	1THR5	7 7/8 [20.0]	17 [43.2]	16 5/8 [42.2]	18 1/8 [46.0]	15 [38.1]
1RMR6	1RHR6	1TMR6	1THR6	9 1/8 [23.2]	18 1/4 [46.4]	17 7/8 [45.4]	19 3/8 [49.2]	16 1/4 [41.3]
1RMR7	1RHR7	1TMR7	1THR7	10 1/4 [26.0]	19 3/8 [49.2]	19 [48.3]	20 1/2 [52.1]	17 3/8 [44.1]
1RMR8	1RHR8	1TMR8	1THR8	11 7/8 [30.2]	21 [53.3]	20 5/8 [52.4]	22 1/8 [56.2]	19 [48.3]
1RMR9	1RHR9	1TMR9	1THR9	12 5/8 [32.1]	21 3/4 [55.2]	21 3/8 [54.3]	22 7/8 [58.1]	19 3/4 [50.2]
2RMR4	2RHR4	2TMR4	2THR4	15 [38.1]	24 1/8 [61.3]	23 3/4 [60.3]	25 1/4 [64.1]	22 1/8 [56.2]
2RMR5	2RHR5	2TMR5	2THR5	17 1/4 [43.8]	26 3/8 [67.0]	26 [66.0]	27 1/2 [69.9]	24 3/8 [61.9]
2RMR6	2RHR6	2TMR6	2THR6	19 3/4 [50.2]	28 7/8 [73.3]	28 1/2 [72.4]	30 [76.2]	26 7/8 [68.3]
2RMR7	2RHR7	2TMR7	2THR7	22 [55.9]	31 1/8 [79.1]	30 3/4 [78.1]	32 1/4 [81.9]	29 1/8 [74.0]
2RMR8	2RHR8	2TMR8	2THR8	25 1/4 [64.1]	34 3/8 [87.3]	34 [86.4]	35 1/2 [90.2]	32 3/8 [82.2]
2RMR9	2RHR9	2TMR9	2THR9	26 3/4 [67.9]	35 7/8 [91.1]	35 1/2 [90.2]	37 [94.0]	33 7/8 [86.0]
3RMR6	3RHR6	3TMR6	3THR6	30 3/8 [77.2]	39 1/2 [100.3]	39 1/8 [99.4]	40 5/8 [103.2]	37 1/2 [95.3]
3RMR7	3RHR7	3TMR7	3THR7	33 3/4 [85.7]	42 7/8 [108.9]	42 1/2 [108.0]	44 [111.8]	40 7/8 [103.8]
3RMR8	3RHR8	3TMR8	3THR8	38 5/8 [98.1]	47 3/4 [121.3]	47 3/8 [120.3]	48 7/8 [124.1]	45 3/4 [116.2]
3RMR9	3RHR9	3TMR9	3THR9	40 7/8 [103.8]	50 [127.0]	49 5/8 [126.0]	51 1/8 [129.9]	48 [121.9]
4RMR7	4RHR7	4TMR7	4THR7	45 1/2 [115.6]	54 5/8 [138.7]	54 1/4 [137.8]	55 3/4 [141.6]	52 5/8 [133.7]
4RMR8	4RHR8	4TMR8	4THR8	52 [132.1]	61 1/8 [155.3]	60 3/4 [154.3]	62 1/4 [158.1]	59 1/8 [150.2]
4RMR9	4RHR9	4TMR9	4THR9	55 [139.7]	64 1/8 [162.9]	63 3/4 [161.9]	65 1/4 [165.7]	62 1/8 [157.8]
5RMR7	5RHR7	5TMR7	5THR7	57 1/4 [145.4]	66 3/8 [168.6]	66 [167.6]	67 1/2 [171.5]	64 3/8 [163.5]
5RMR8	5RHR8	5TMR8	5THR8	65 3/8 [166.1]	74 1/2 [189.2]	74 1/8 [188.3]	75 5/8 [192.1]	72 1/2 [184.2]
5RMR9	5RHR9	5TMR9	5THR9	69 1/8 [175.6]	78 1/4 [198.8]	77 7/8 [197.8]	79 3/8 [201.6]	76 1/4 [193.7]
6RMR8	6RHR8	6TMR8	6THR8	78 3/4 [200.0]	87 7/8 [223.2]	87 1/2 [222.3]	89 [226.1]	85 7/8 [218.1]
6RMR9	6RHR9	6TMR9	6THR9	83 1/4 [211.5]	92 3/8 [234.6]	92 [233.7]	93 1/2 [237.5]	90 3/8 [229.6]
7RMR8	7RHR8	7TMR8	7THR8	92 1/8 [234.0]	101 1/4 [257.2]	100 7/8 [256.2]	102 3/8 [260.0]	99 1/4 [252.1]
7RMR9	7RHR9	7TMR9	7THR9	97 3/8 [247.3]	106 1/2 [270.5]	106 1/8 [269.6]	107 5/8 [273.4]	104 1/2 [265.4]
8RMR8	8RHR8	8TMR8	8THR8	105 1/2 [268.0]	114 5/8 [291.1]	114 1/4 [290.2]	115 3/4 [294.0]	112 5/8 [286.1]
8RMR9	8RHR9	8TMR9	8THR9	111 1/2 [283.2]	120 5/8 [306.4]	120 1/4 [305.4]	121 3/4 [309.2]	118 5/8 [301.3]
9RMR8	9RHR8	9TMR8	9THR8	118 7/8 [301.9]	128 [325.1]	127 5/8 [324.2]	129 1/8 [328.0]	126 [320.0]
9RMR9	9RHR9	9TMR9	9THR9	125 5/8 [319.1]	134 3/4 [342.3]	134 3/8 [341.3]	135 7/8 [345.1]	132 3/4 [337.2]
10RMR8	10RHR8	10TMR8	10THR8	132 1/4 [335.9]	141 3/8 [359.1]	141 [358.1]	142 1/2 [362.0]	139 3/8 [354.0]
10RMR9	10RHR9	10TMR9	10THR9	139 3/4 [355.0]	148 7/8 [378.1]	148 1/2 [377.2]	150 [381.0]	146 7/8 [373.1]

If Gagecock vessel center to center dimension is known:

- Find the dimension column matching desired gagecock series and connection type (example: 520, (F) union connections)
- Follow this column down to the dimension closest to required vessel center to center dimension without exceeding this dimension.
- Follow this row to the left to the GAGE MODEL NUMBER column of the style of gage required. This represents the largest size gage meeting the required gagecock vessel center to center dimension.

If Gage model number is known:

- Find gage model under the GAGE MODEL NUMBER column.
- Follow that row to the right to the dimension column matching gagecock series and connection type (example: 520; (F) union connections) This represents the minimum required gagecock vessel center to center for the



Model 730 Gagecock Shown