

PENBERTHY dimensions

Section 2000
Dimensions 2704.1
Issued 04/09
Replaces 01/09

For: **MINIMUM GAGECOCK CENTERS**

Series L Gages with Series 100 or 200 Gagecocks

FOR SIDE CONNECTED GAGES ONLY

GAGE MODEL NUMBER		Visible Glass in inches & [cm]	MINIMUM GAGECOCK VESSEL CENTERS IN INCHES & [CM]					
			1/2" NPT GAGE CONNECTION			3/4" NPT GAGE CONNECTION		
			Standard Female Union 120 or 220 Gagecock with Nipples	Optional Male Union 120 or 220 Gagecock	Standard Female Rigid 130 or 230 Gagecock with Nipples	Optional Female Union 120 or 220 Gagecock with Nipples	Optional Male Union 120 or 220 Gagecock	Optional Female Rigid 130 or 230 Gagecock with Nipples
Reflex	Transparent							
RL	TL							
1RL1	1TL1	3 3/4 [9.5]		5 1/4 [13.3]**			5 5/8 [14.3]**	
1RL2	1TL2	4 3/4 [12.1]		6 1/4 [15.9]**			6 5/8 [16.8]**	
1RL3	1TL3	5 3/4 [14.6]		7 1/4 [18.4]**			7 5/8 [19.4]**	
1RL4	1TL4	6 3/4 [17.1]		8 1/4 [21.0]**			8 5/8 [21.9]**	
1RL5	1TL5	7 7/8 [20.0]		9 3/8 [23.8]**			9 3/4 [24.8]**	
1RL6	1TL6	9 1/8 [23.2]		10 5/8 [27.0]			11 [27.9]	
1RL7	1TL7	10 1/4 [26.0]		11 3/4 [29.8]			12 1/8 [30.8]	
1RL8	1TL8	11 7/8 [30.2]		13 3/8 [34.0]			13 3/4 [34.9]	
1RL9	1TL9	12 5/8 [32.1]		14 1/8 [35.9]			14 1/2 [36.8]	
2RL4	2TL4	15 [38.1]		16 1/2 [41.9]			16 7/8 [42.9]	
2RL5	2TL5	17 1/4 [43.8]		18 3/4 [47.6]			19 1/8 [48.6]	
2RL6	2TL6	19 3/4 [50.2]		21 1/4 [54.0]			21 5/8 [54.9]	
2RL7	2TL7	22 [55.9]		23 1/2 [59.7]			23 7/8 [60.6]	
2RL8	2TL8	25 1/4 [64.1]		26 3/4 [67.9]			27 1/8 [68.9]	
2RL9	2TL9	26 3/4 [67.9]		28 1/4 [71.8]			28 5/8 [72.7]	
3RL6	3TL6	30 3/8 [77.2]		31 7/8 [81.0]			32 1/4 [81.9]	
3RL7	3TL7	33 3/4 [85.7]		35 1/4 [89.5]			35 5/8 [90.5]	
3RL8	3TL8	38 5/8 [98.1]		40 1/8 [101.9]			40 1/2 [102.9]	
3RL9	3TL9	40 7/8 [103.8]		42 3/8 [107.6]			42 3/4 [108.6]	
4RL7	4TL7	45 1/2 [115.6]		47 [119.4]			47 3/8 [120.3]	
4RL8	4TL8	52 [132.1]		53 1/2 [135.9]			53 7/8 [136.8]	
4RL9	4TL9	55 [139.7]		56 1/2 [143.5]			56 7/8 [144.5]	
5RL7	5TL7	57 1/4 [145.4]		58 3/4 [149.2]			59 1/8 [150.2]	
5RL8	5TL8	65 3/8 [166.1]		66 7/8 [169.9]			67 1/4 [170.8]	
5RL9	5TL9	69 1/8 [175.6]		70 5/8 [179.4]			71 [180.3]	
6RL8	6TL8	78 3/4 [200.0]		80 1/4 [203.8]			80 5/8 [204.8]	
6RL9	6TL9	83 1/4 [211.5]		84 3/4 [215.3]			85 1/8 [216.2]	
7RL8	7TL8	92 1/8 [234.0]		93 5/8 [237.8]			94 [238.8]	
7RL9	7TL9	97 3/8 [247.3]		98 7/8 [251.1]			99 1/4 [252.1]	
8RL8	8TL8	105 1/2 [268.0]		107 [271.8]			107 3/8 [272.7]	
8RL9	8TL9	111 1/2 [283.2]		113 [287.0]			113 3/8 [288.0]	
9RL8	9TL8	118 7/8 [301.9]		120 3/8 [305.8]			120 3/4 [306.7]	
9RL9	9TL9	125 5/8 [319.1]		127 1/8 [322.9]			127 1/2 [323.9]	
10RL8	10TL8	132 1/4 [335.9]		133 3/4 [339.7]			134 1/8 [340.7]	
10RL9	10TL9	139 3/4 [355.0]		141 1/4 [358.8]			141 5/8 [359.7]	

**Minimum allowable Gagecock Vessel C-C is determined by assembly clearance required between upper and lower gagecocks.

**Minimum Gagecock Vessel C-C for specified Gage Model with the following gagecocks:

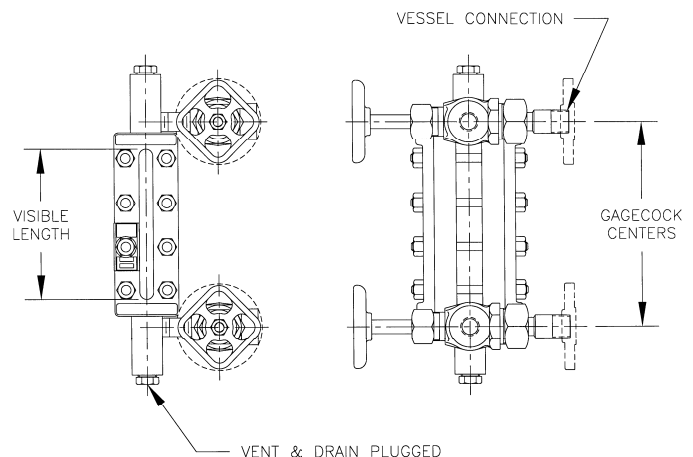
120/220 = 4 1/2 [11.4]
130 = 9 [22.9]
230 = 10 [25.4]

If you know your vessel center to center dimension then:

- Find the dimension column that matches your gage connection size and type (example: 1/2" NPT Female union connections)
- Follow that column down to the dimension closest to your required center to center dimension without exceeding that dimension.
- Take that dimension and the row back to the left to the GAGE MODEL NUMBER column of the style of gage required. This represents the largest size gage that meets the required center to center dimension.

If you know the gage model number then:

- Find your model gage under the GAGE MODEL NUMBER column.
- Follow that row to the right to the dimension column that matches your gage size and type of gage connections (example: 1/2" NPT Female union connections)
- This represents the minimum required vessel centers for the model of gage selected.



MODEL 130 GAGECOCK SHOWN

PENBERTHY

dimensions

Section 2000
 Dimensions 2704.2
 Issued 04/09
 Replaces 01/09

For: **MINIMUM GAGECOCK CENTERS**

Series L Gages with Series 300 or 400 Gagecocks

FOR SIDE CONNECTED GAGES ONLY

GAGE MODEL NUMBER		Visible Glass in Inches & [cm]	MINIMUM GAGECOCK VESSEL CENTERS IN INCHES & [CM]					
			1/2" NPT GAGE CONNECTION			3/4" NPT GAGE CONNECTION		
			Standard Female Union 320 or 420 Gagecock with Nipples	Optional Male Union 320 or 420 Gagecock	Standard Female Rigid 330 or 430 Gagecock with Nipples	Optional Female Union 320 or 420 Gagecock with Nipples	Optional Male Union 320 or 420 Gagecock	Optional Female Rigid 330 or 430 Gagecock with Nipples
Reflex RL	Transparent TL							
1RL1	1TL1	3 3/4 [9.5]	Not Available			Not Available		
1RL2	1TL2	4 3/4 [12.1]	4 3/4 [12.1]**			5 1/8 [13.0]**		
1RL3	1TL3	5 3/4 [14.6]	5 3/4 [14.6]**			6 1/8 [15.6]**		
1RL4	1TL4	6 3/4 [17.1]	6 3/4 [17.1]**			7 1/8 [18.1]**		
1RL5	1TL5	7 7/8 [20.0]	7 7/8 [20.0]**			8 1/4 [21.0]**		
1RL6	1TL6	9 1/8 [23.2]	9 1/8 [23.2]**			9 1/2 [24.1]**		
1RL7	1TL7	10 1/4 [26.0]	10 1/4 [26.0]			10 5/8 [27.0]		
1RL8	1TL8	11 7/8 [30.2]	11 7/8 [30.2]			12 1/4 [31.1]		
1RL9	1TL9	12 5/8 [32.1]	12 5/8 [32.1]			13 [33.0]		
2RL4	2TL4	15 [38.1]	15 [38.1]			15 3/8 [39.1]		
2RL5	2TL5	17 1/4 [43.8]	17 1/4 [43.8]			17 5/8 [44.8]		
2RL6	2TL6	19 3/4 [50.2]	19 3/4 [50.2]			20 1/8 [51.1]		
2RL7	2TL7	22 [55.9]	22 [55.9]			22 3/8 [56.8]		
2RL8	2TL8	25 1/4 [64.1]	25 1/4 [64.1]			25 5/8 [65.1]		
2RL9	2TL9	26 3/4 [67.9]	26 3/4 [67.9]			27 1/8 [68.9]		
3RL6	3TL6	30 3/8 [77.2]	30 3/8 [77.2]			30 3/4 [78.1]		
3RL7	3TL7	33 3/4 [85.7]	33 3/4 [85.7]			34 1/8 [86.7]		
3RL8	3TL8	38 5/8 [98.1]	38 5/8 [98.1]			39 [99.1]		
3RL9	3TL9	40 7/8 [103.8]	40 7/8 [103.8]			41 1/4 [104.8]		
4RL7	4TL7	45 1/2 [115.6]	45 1/2 [115.6]			45 7/8 [116.5]		
4RL8	4TL8	52 [132.1]	52 [132.1]			52 3/8 [133.0]		
4RL9	4TL9	55 [139.7]	55 [139.7]			55 3/8 [140.7]		
5RL7	5TL7	57 1/4 [145.4]	57 1/4 [145.4]			57 5/8 [146.4]		
5RL8	5TL8	65 3/8 [166.1]	65 3/8 [166.1]			65 3/4 [167.0]		
5RL9	5TL9	69 1/8 [175.6]	69 1/8 [175.6]			69 1/2 [176.5]		
6RL8	6TL8	78 3/4 [200.0]	78 3/4 [200.0]			79 1/8 [201.0]		
6RL9	6TL9	83 1/4 [211.5]	83 1/4 [211.5]			83 5/8 [212.4]		
7RL8	7TL8	92 1/8 [234.0]	92 1/8 [234.0]			92 1/2 [235.0]		
7RL9	7TL9	97 3/8 [247.3]	97 3/8 [247.3]			97 3/4 [248.3]		
8RL8	8TL8	105 1/2 [268.0]	105 1/2 [268.0]			105 7/8 [268.9]		
8RL9	8TL9	111 1/2 [283.2]	111 1/2 [283.2]			111 7/8 [284.2]		
9RL8	9TL8	118 7/8 [301.9]	118 7/8 [301.9]			119 1/4 [302.9]		
9RL9	9TL9	125 5/8 [319.1]	125 5/8 [319.1]			126 [320.0]		
10RL8	10TL8	132 1/4 [335.9]	132 1/4 [335.9]			132 5/8 [336.9]		
10RL9	10TL9	139 3/4 [355.0]	139 3/4 [355.0]			140 1/8 [355.9]		

**Minimum allowable Gagecock Vessel C-C is determined by assembly clearance required between upper and lower gagecocks.

**Minimum Gagecock Vessel C-C for specified Gage Model with the following gagecocks:

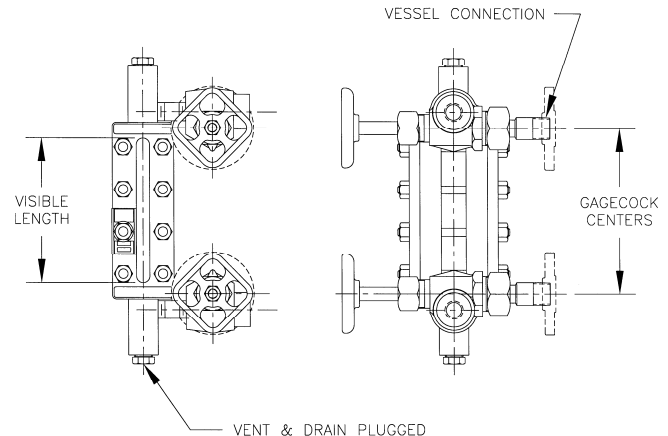
320/420 = 4 1/2 [11.4]
 330 = 9 [22.9]
 430 = 10 [25.4]

If you know your vessel center to center dimension then:

- Find the dimension column that matches your gage connection size and type (example: 1/2" NPT Female union connections)
- Follow that column down to the dimension closest to your required center to center dimension without exceeding that dimension.
- Take that dimension and the row back to the left to the GAGE MODEL NUMBER column of the style of gage required. This represents the largest size gage that meets the required center to center dimension.

If you know the gage model number then:

- Find your model gage under the GAGE MODEL NUMBER column.
- Follow that row to the right to the dimension column that matches your gage size and type of gage connections (example: 1/2" NPT Female union connections)
- This represents the minimum required vessel centers for the model of gage selected.



MODEL 330 GAGECOCK SHOWN

PENBERTHY dimensions

Section 2000
Dimensions 2704.3
Issued 04/09
Replaces 01/09

For: **MINIMUM GAGECOCK CENTERS**

Series M or H Gages with Series 100 or 200 Gagecocks

FOR SIDE CONNECTED GAGES ONLY

GAGE MODEL NUMBER				Visible Glass in inches & [cm]	MINIMUM GAGECOCK VESSEL CENTERS IN INCHES & [CM]					
					1/2" NPT GAGE CONNECTION			3/4" NPT GAGE CONNECTION		
					Standard Female Union 120 or 220 Gagecock with Nipples	Optional Male Union 120 or 220 Gagecock	Standard Female Rigid 130 or 230 Gagecock with Nipples	Optional Female Union 120 or 220 Gagecock with Nipples	Optional Male Union 120 or 220 Gagecock	Optional Female Rigid 130 or 230 Gagecock with Nipples
Reflex		Transparent								
RM	RH	TM	TH							
1RM1		1TM1		3 3/4 [9.5]		4 3/4 [12.1]**				5 1/4 [13.3]**
1RM2		1TM2		4 3/4 [12.1]		5 3/4 [14.6]**				6 1/4 [15.9]**
1RM3		1TM3		5 3/4 [14.6]		6 3/4 [17.1]**				7 1/4 [18.4]**
1RM4	1RH4	1TM4	1TH4	6 3/4 [17.1]		7 3/4 [19.7]**				8 1/4 [21.0]**
1RM5	1RH5	1TM5	1TH5	7 7/8 [20.0]		8 7/8 [22.5]**				9 3/8 [23.8]**
1RM6	1RH6	1TM6	1TH6	9 1/8 [23.2]		10 1/8 [25.7]				10 5/8 [27.0]
1RM7	1RH7	1TM7	1TH7	10 1/4 [26.0]		11 1/4 [29.6]				11 3/4 [29.8]
1RM8	1RH8	1TM8	1TH8	11 7/8 [30.2]		12 7/8 [32.7]				13 3/8 [34.0]
1RM9	1RH9	1TM9	1TH9	12 5/8 [32.1]		13 5/8 [34.6]				14 1/8 [35.9]
2RM4	2RH4	2TM4	2TH4	15 [38.1]		16 [40.6]				16 1/2 [41.9]
2RM5	2RH5	2TM5	2TH5	17 1/4 [43.8]		18 1/4 [46.4]				18 3/4 [47.6]
2RM6	2RH6	2TM6	2TH6	19 3/4 [50.2]		20 3/4 [52.7]				21 1/4 [54.0]
2RM7	2RH7	2TM7	2TH7	22 [55.9]		23 [58.4]				23 1/2 [59.7]
2RM8	2RH8	2TM8	2TH8	25 1/4 [64.1]		26 1/4 [66.7]				26 3/4 [67.9]
2RM9	2RH9	2TM9	2TH9	26 3/4 [67.9]		27 3/4 [70.5]				28 1/4 [71.8]
3RM6	3RH6	3TM6	3TH6	30 3/8 [77.2]		31 3/8 [79.7]				31 7/8 [81.0]
3RM7	3RH7	3TM7	3TH7	33 3/4 [85.7]		34 3/4 [88.3]				35 1/4 [89.5]
3RM8	3RH8	3TM8	3TH8	38 5/8 [98.1]		39 5/8 [100.6]				40 1/8 [101.9]
3RM9	3RH9	3TM9	3TH9	40 7/8 [103.8]		41 7/8 [106.4]				42 3/8 [107.6]
4RM7	4RH7	4TM7	4TH7	45 1/2 [115.6]		46 1/2 [118.1]				47 [119.4]
4RM8	4RH8	4TM8	4TH8	52 [132.1]		53 [134.6]				53 1/2 [135.9]
4RM9	4RH9	4TM9	4TH9	55 [139.7]		56 [142.2]				56 1/2 [143.5]
5RM7	5RH7	5TM7	5TH7	57 1/4 [145.4]		58 1/4 [148.0]				58 3/4 [149.2]
5RM8	5RH8	5TM8	5TH8	65 3/8 [166.1]		66 3/8 [168.6]				66 7/8 [169.9]
5RM9	5RH9	5TM9	5TH9	69 1/8 [175.6]		70 1/8 [178.1]				70 5/8 [179.4]
6RM8	6RH8	6TM8	6TH8	78 3/4 [200.0]		79 3/4 [202.6]				80 1/4 [203.8]
6RM9	6RH9	6TM9	6TH9	83 1/4 [211.5]		84 1/4 [214.0]				84 3/4 [215.3]
7RM8	7RH8	7TM8	7TH8	92 1/8 [234.0]		93 1/8 [236.5]				93 5/8 [237.8]
7RM9	7RH9	7TM9	7TH9	97 3/8 [247.3]		98 3/8 [249.9]				98 7/8 [251.1]
8RM8	8RH8	8TM8	8TH8	105 1/2 [268.0]		106 1/2 [270.5]				107 [271.8]
8RM9	8RH9	8TM9	8TH9	111 1/2 [283.2]		112 1/2 [285.8]				113 [287.0]
9RM8	9RH8	9TM8	9TH8	118 7/8 [301.9]		119 7/8 [304.5]				120 3/8 [305.8]
9RM9	9RH9	9TM9	9TH9	125 5/8 [319.1]		126 5/8 [321.6]				127 1/8 [322.9]
10RM8	10RH8	10TM8	10TH8	132 1/4 [335.9]		133 1/4 [338.5]				133 3/4 [339.7]
10RM9	10RH9	10TM9	10TH9	139 3/4 [355.0]		140 3/4 [357.5]				141 1/4 [358.8]

**Minimum allowable Gagecock Vessel C-C is determined by assembly clearance required between upper and lower gagecocks.

**Minimum Gagecock Vessel C-C for specified Gage Model with the following gagecocks:

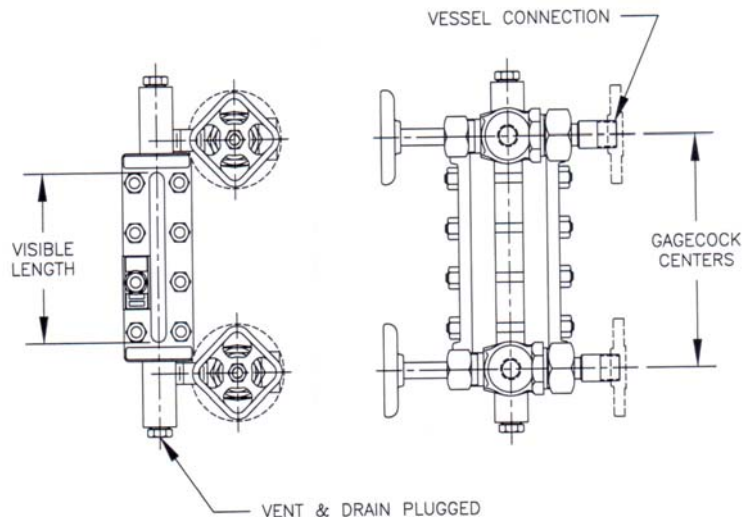
120/220 = 4 1/2 [11.4]
130 = 9 [22.9]
230 = 10 [25.4]

If you know your vessel center to center dimension then:

- Find the dimension column that matches your gage connection size and type (example: 1/2" NPT Female union connections)
- Follow that column down to the dimension closest to your required center to center dimension without exceeding that dimension.
- Take that dimension and the row back to the left to the GAGE MODEL NUMBER column of the style of gage required.
This represents the largest size gage that meets the required center to center dimension.

If you know the gage model number then:

- Find your model gage under the GAGE MODEL NUMBER column.
- Follow that row to the right to the dimension column that matches your gage size and type of gage connections (example: 1/2" NPT Female union connections)
- This represents the minimum required vessel centers for the model of gage selected.



MODEL 130 GAGECOCK SHOWN

PENBERTHY dimensions

Section 2000
Dimensions 2704.4
Issued 04/09
Replaces 01/09

For: **MINIMUM GAGECOCK CENTERS**

Series M or H Gages with Series 300 or 400 Gagecocks

FOR SIDE CONNECTED GAGES ONLY

GAGE MODEL NUMBER				Visible Glass inches & [cm]	MINIMUM GAGECOCK VESSEL CENTERS IN INCHES & [CM]					
					1/2" NPT GAGE CONNECTION			3/4" NPT GAGE CONNECTION		
					Standard Female Union 320 or 420 Gagecock with Nipples	Optional Male Union 320 or 420 Gagecock	Standard Female Rigid 330 or 430 Gagecock with Nipples	Optional Female Union 320 or 420 Gagecock with Nipples	Optional Male Union 320 or 420 Gagecock	Optional Female Rigid 330 or 430 Gagecock with Nipples
Reflex		Transparent								
RM	RH	TM	TH							
1RM1		1TM1		3 3/4 [9.5]		Not Available				Not Available
1RM2		1TM2		4 3/4 [12.1]		Not Available				4 3/4 [12.1]**
1RM3		1TM3		5 3/4 [14.6]		5 1/4 [13.3]**				5 3/4 [14.6]**
1RM4	1RH4	1TM4	1TH4	6 3/4 [17.1]		6 1/4 [15.9]**				6 3/4 [17.1]**
1RM5	1RH5	1TM5	1TH5	7 7/8 [20.0]		7 3/8 [18.7]**				7 7/8 [20.0]**
1RM6	1RH6	1TM6	1TH6	9 1/8 [23.2]		8 5/8 [21.9]**				9 1/8 [23.2]**
1RM7	1RH7	1TM7	1TH7	10 1/4 [26.0]		9 3/4 [24.8]**				10 1/4 [26.0]
1RM8	1RH8	1TM8	1TH8	11 7/8 [30.2]		11 3/8 [28.9]				11 7/8 [30.2]
1RM9	1RH9	1TM9	1TH9	12 5/8 [32.1]		12 1/8 [30.8]				12 5/8 [32.1]
2RM4	2RH4	2TM4	2TH4	15 [38.1]		14 1/2 [36.8]				15 [38.1]
2RM5	2RH5	2TM5	2TH5	17 1/4 [43.8]		16 3/4 [42.5]				17 1/4 [43.8]
2RM6	2RH6	2TM6	2TH6	19 3/4 [50.2]		19 1/4 [48.9]				19 3/4 [50.2]
2RM7	2RH7	2TM7	2TH7	22 [55.9]		21 1/2 [54.6]				22 [55.9]
2RM8	2RH8	2TM8	2TH8	25 1/4 [64.1]		24 3/4 [62.9]				25 1/4 [64.1]
2RM9	2RH9	2TM9	2TH9	26 3/4 [67.9]		26 1/4 [66.7]				26 3/4 [67.9]
3RM6	3RH6	3TM6	3TH6	30 3/8 [77.2]		29 7/8 [75.9]				30 3/8 [77.2]
3RM7	3RH7	3TM7	3TH7	33 3/4 [85.7]		33 1/4 [84.5]				33 3/4 [85.7]
3RM8	3RH8	3TM8	3TH8	38 5/8 [98.1]		38 1/8 [96.8]				38 5/8 [98.1]
3RM9	3RH9	3TM9	3TH9	40 7/8 [103.8]		40 3/8 [102.6]				40 7/8 [103.8]
4RM7	4RH7	4TM7	4TH7	45 1/2 [115.6]		45 [114.3]				45 1/2 [115.6]
4RM8	4RH8	4TM8	4TH8	52 [132.1]		51 1/2 [130.8]				52 [132.1]
4RM9	4RH9	4TM9	4TH9	55 [139.7]		54 1/2 [138.4]				55 [139.7]
5RM7	5RH7	5TM7	5TH7	57 1/4 [145.4]		56 3/4 [144.1]				57 1/4 [145.4]
5RM8	5RH8	5TM8	5TH8	65 3/8 [166.1]		64 7/8 [164.8]				65 3/8 [166.1]
5RM9	5RH9	5TM9	5TH9	69 1/8 [175.6]		68 5/8 [174.3]				69 1/8 [175.6]
6RM8	6RH8	6TM8	6TH8	78 3/4 [200.0]		78 1/4 [198.8]				78 3/4 [200.0]
6RM9	6RH9	6TM9	6TH9	83 1/4 [211.5]		82 3/4 [210.2]				83 1/4 [211.5]
7RM8	7RH8	7TM8	7TH8	92 1/8 [234.0]		91 5/8 [232.7]				92 1/8 [234.0]
7RM9	7RH9	7TM9	7TH9	97 3/8 [247.3]		96 7/8 [246.1]				97 3/8 [247.3]
8RM8	8RH8	8TM8	8TH8	105 1/2 [268.0]		105 [266.7]				105 1/2 [268.0]
8RM9	8RH9	8TM9	8TH9	111 1/2 [283.2]		111 [281.9]				111 1/2 [283.2]
9RM8	9RH8	9TM8	9TH8	118 7/8 [301.9]		118 3/8 [300.7]				118 7/8 [301.9]
9RM9	9RH9	9TM9	9TH9	125 5/8 [319.1]		125 1/8 [317.8]				125 5/8 [319.1]
10RM8	10RH8	10TM8	10TH8	132 1/4 [335.9]		131 3/4 [334.6]				132 1/4 [335.9]
10RM9	10RH9	10TM9	10TH9	139 3/4 [355.0]		139 1/4 [353.7]				139 3/4 [355.0]

**Minimum allowable Gagecock Vessel C-C is determined by assembly clearance required between upper and lower gagecocks.

**Minimum Gagecock Vessel C-C for specified Gage Model with the following gagecocks:

320/420 = 4 1/2 [11.4]

330 = 9 [22.9]

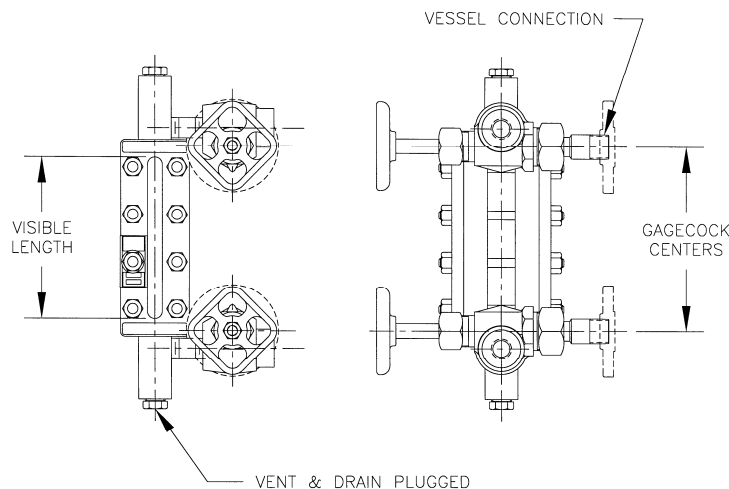
430 = 10 [25.4]

If you know your vessel center to center dimension then:

- Find the dimension column that matches your gage connection size and type (example: 1/2" NPT Female union connections)
- Follow that column down to the dimension closest to your required center to center dimension without exceeding that dimension.
- Take that dimension and the row back to the left to the GAGE MODEL NUMBER column of the style of gage required.
This represents the largest size gage that meets the required center to center dimension.

If you know the gage model number then:

- Find your model gage under the GAGE MODEL NUMBER column.
- Follow that row to the right to the dimension column that matches your gage size and type of gage connections (example: 1/2" NPT Female union connections)
- This represents the minimum required vessel centers for the model of gage selected.



MODEL 330 GAGECOCK SHOWN

PENBERTHY

dimensions

Section 2000
 Dimensions 2704.5
 Issued 04/09
 Replaces 01/09

For: MINIMUM GAGECOCK CENTERS

Series LC Gages with Series 100 or 200 Gagecocks

FOR SIDE CONNECTED GAGES ONLY

GAGE MODEL NUMBER		Visible Glass in inches & [cm]	MINIMUM GAGECOCK VESSEL CENTERS IN INCHES & [CM]				
			1/2" NPT GAGE CONNECTION		3/4" NPT GAGE CONNECTION		
			Standard Female Union 120 or 220 Gagecock with Nipples	Optional Male Union 120 or 220 Gagecock	Standard Female Rigid 130 or 230 Gagecock with Nipples	Optional Female Union 120 or 220 Gagecock with Nipples	Optional Male Union 120 or 220 Gagecock
Reflex RLC	Transparent TLC						
1RLC4	1TLC4	6 3/4 [17.1]		8 1/4 [21.0]**		8 1/4 [21.0]**	
1RLC5	1TLC5	7 7/8 [20.0]		9 3/8 [23.8]**		9 3/8 [23.8]**	
1RLC6	1TLC6	9 1/8 [23.2]		10 5/8 [27.0]		10 5/8 [27.0]	
1RLC7	1TLC7	10 1/4 [26.0]		11 3/4 [29.8]		11 3/4 [29.8]	
1RLC8	1TLC8	11 7/8 [30.2]		13 3/8 [34.0]		13 3/8 [34.0]	
1RLC9	1TLC9	12 5/8 [32.1]		14 1/8 [35.9]		14 1/8 [35.9]	
2RLC4	2TLC4	15 [38.1]		16 1/2 [41.9]		16 1/2 [41.9]	
2RLC5	2TLC5	17 1/4 [43.8]		18 3/4 [47.6]		18 3/4 [47.6]	
2RLC6	2TLC6	19 3/4 [50.2]		21 1/4 [54.0]		21 1/4 [54.0]	
2RLC7	2TLC7	22 [55.9]		23 1/2 [59.7]		23 1/2 [59.7]	
2RLC8	2TLC8	25 1/4 [64.1]		26 3/4 [67.9]		26 3/4 [67.9]	
2RLC9	2TLC9	26 3/4 [67.9]		28 1/4 [71.8]		28 1/4 [71.8]	
3RLC6	3TLC6	30 3/8 [77.2]		31 7/8 [81.0]		31 7/8 [81.0]	
3RLC7	3TLC7	33 3/4 [85.7]		35 1/4 [89.5]		35 1/4 [89.5]	
3RLC8	3TLC8	38 5/8 [98.1]		40 1/8 [101.9]		40 1/8 [101.9]	
3RLC9	3TLC9	40 7/8 [103.8]		42 3/8 [107.6]		42 3/8 [107.6]	
4RLC7	4TLC7	45 1/2 [115.6]		47 [119.4]		47 [119.4]	
4RLC8	4TLC8	52 [132.1]		53 1/2 [135.9]		53 1/2 [135.9]	
4RLC9	4TLC9	55 [139.7]		56 1/2 [143.5]		56 1/2 [143.5]	
5RLC7	5TLC7	57 1/4 [145.4]		58 3/4 [149.2]		58 3/4 [149.2]	
5RLC8	5TLC8	65 3/8 [166.1]		66 7/8 [169.9]		66 7/8 [169.9]	
5RLC9	5TLC9	69 1/8 [175.6]		70 5/8 [179.4]		70 5/8 [179.4]	
6RLC8	6TLC8	78 3/4 [200.0]		80 1/4 [203.8]		80 1/4 [203.8]	
6RLC9	6TLC9	83 1/4 [211.5]		84 3/4 [215.3]		84 3/4 [215.3]	
7RLC8	7TLC8	92 1/8 [234.0]		93 5/8 [237.8]		93 5/8 [237.8]	
7RLC9	7TLC9	97 3/8 [247.3]		98 7/8 [251.1]		98 7/8 [251.1]	
8RLC8	8TLC8	105 1/2 [268.0]		107 [271.8]		107 [271.8]	
8RLC9	8TLC9	111 1/2 [283.2]		113 [287.0]		113 [287.0]	
9RLC8	9TLC8	118 7/8 [301.9]		120 3/8 [305.8]		120 3/8 [305.8]	
9RLC9	9TLC9	125 5/8 [319.1]		127 1/8 [322.9]		127 1/8 [322.9]	
10RLC8	10TLC8	132 1/4 [335.9]		133 3/4 [339.7]		133 3/4 [339.7]	
10RLC9	10TLC9	139 3/4 [355.0]		141 1/4 [358.8]		141 1/4 [358.8]	

**Minimum allowable Gagecock Vessel C-C is determined by assembly clearance required between upper and lower gagecocks.

**Minimum Gagecock Vessel C-C for specified Gage Model with the following gagecocks:

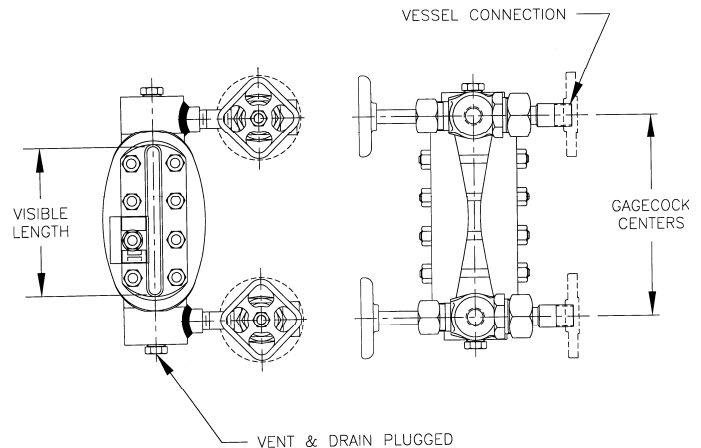
120/220 = 4 1/2 [11.4]
 130 = 9 [22.9]
 230 = 10 [25.4]

If Gagecock vessel center to center dimension is known:

- Find the dimension column that matches the gage connection size and type (example: 1/2" NPT Female union connections).
- Follow this column down to the dimension closest to the required gagecock center to center dimension without exceeding that dimension.
- Take that dimension and follow the row back to the left to the GAGE MODEL NUMBER column of the style of gage required. This reflects the largest size gage that meets the required gagecock center to center dimension.

If gage model number is known:

- Find gage model under the GAGE MODEL NUMBER column.
- Follow that row to the right until you get to the dimension column matching the gage connection size (example: 1/2" NPT Female union connections).
- This represents the minimum required gagecock vessel center to center for the model of gage selected.



MODEL 130 GAGECOCK SHOWN

PENBERTHY dimensions

Section 2000
Dimensions 2704.6
Issued 04/09
Replaces 01/09

For: **MINIMUM GAGECOCK CENTERS**

Series LC Gages with Series 300 or 400 Gagecocks

FOR SIDE CONNECTED GAGES ONLY

GAGE MODEL NUMBER		Visible Glass in inches & [cm]	MINIMUM GAGECOCK VESSEL CENTERS IN INCHES & [CM]					
			1/2" NPT GAGE CONNECTION			3/4" NPT GAGE CONNECTION		
			Standard Female Union 320 or 420 Gagecock with Nipples	Optional Male Union 320 or 420 Gagecock	Standard Female Rigid 330 or 430 Gagecock with Nipples	Optional Female Union 320 or 420 Gagecock with Nipples	Optional Male Union 320 or 420 Gagecock	Optional Female Rigid 330 or 430 Gagecock with Nipples
Reflex RLC	Transparent TLC							
1RLC4	1TLC4	6 3/4 [17.1]		6 3/4 [17.1]**			6 3/4 [17.1]**	
1RLC5	1TLC5	7 7/8 [20.0]		7 7/8 [20.0]**			7 7/8 [20.0]**	
1RLC6	1TLC6	9 1/8 [23.2]		9 1/8 [23.2]**			9 1/8 [23.2]**	
1RLC7	1TLC7	10 1/4 [26.0]		10 1/4 [26.0]			10 1/4 [26.0]	
1RLC8	1TLC8	11 7/8 [30.2]		11 7/8 [30.2]			11 7/8 [30.2]	
1RLC9	1TLC9	12 5/8 [32.1]		12 5/8 [32.1]			12 5/8 [32.1]	
2RLC4	2TLC4	15 [38.1]		15 [38.1]			15 [38.1]	
2RLC5	2TLC5	17 1/4 [43.8]		17 1/4 [43.8]			17 1/4 [43.8]	
2RLC6	2TLC6	19 3/4 [50.2]		19 3/4 [50.2]			19 3/4 [50.2]	
2RLC7	2TLC7	22 [55.9]		22 [55.9]			22 [55.9]	
2RLC8	2TLC8	25 1/4 [64.1]		25 1/4 [64.1]			25 1/4 [64.1]	
2RLC9	2TLC9	26 3/4 [67.9]		26 3/4 [67.9]			26 3/4 [67.9]	
3RLC6	3TLC6	30 3/8 [77.2]		30 3/8 [77.2]			30 3/8 [77.2]	
3RLC7	3TLC7	33 3/4 [85.7]		33 3/4 [85.7]			33 3/4 [85.7]	
3RLC8	3TLC8	38 5/8 [98.1]		38 5/8 [98.1]			38 5/8 [98.1]	
3RLC9	3TLC9	40 7/8 [103.8]		40 7/8 [103.8]			40 7/8 [103.8]	
4RLC7	4TLC7	45 1/2 [115.6]		45 1/2 [115.6]			45 1/2 [115.6]	
4RLC8	4TLC8	52 [132.1]		52 [132.1]			52 [132.1]	
4RLC9	4TLC9	55 [139.7]		55 [139.7]			55 [139.7]	
5RLC7	5TLC7	57 1/4 [145.4]		57 1/4 [145.4]			57 1/4 [145.4]	
5RLC8	5TLC8	65 3/8 [166.1]		65 3/8 [166.1]			65 3/8 [166.1]	
5RLC9	5TLC9	69 1/8 [175.6]		69 1/8 [175.6]			69 1/8 [175.6]	
6RLC8	6TLC8	78 3/4 [200.0]		78 3/4 [200.0]			78 3/4 [200.0]	
6RLC9	6TLC9	83 1/4 [211.5]		83 1/4 [211.5]			83 1/4 [211.5]	
7RLC8	7TLC8	92 1/8 [234.0]		92 1/8 [234.0]			92 1/8 [234.0]	
7RLC9	7TLC9	97 3/8 [247.3]		97 3/8 [247.3]			97 3/8 [247.3]	
8RLC8	8TLC8	105 1/2 [268.0]		105 1/2 [268.0]			105 1/2 [268.0]	
8RLC9	8TLC9	111 1/2 [283.2]		111 1/2 [283.2]			111 1/2 [283.2]	
9RLC8	9TLC8	118 7/8 [301.9]		118 7/8 [301.9]			118 7/8 [301.9]	
9RLC9	9TLC9	125 5/8 [319.1]		125 5/8 [319.1]			125 5/8 [319.1]	
10RLC8	10TLC8	132 1/4 [335.9]		132 1/4 [335.9]			132 1/4 [335.9]	
10RLC9	10TLC9	139 3/4 [355.0]		139 3/4 [355.0]			139 3/4 [355.0]	

**Minimum allowable Gagecock Vessel C-C is determined by assembly clearance required between upper and lower gagecocks.

**Minimum Gagecock Vessel C-C for specified Gage Model with the following gagecocks:

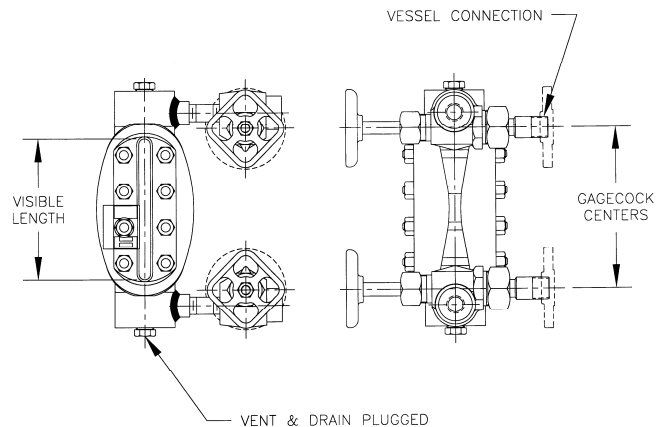
320/420 = 4 1/2 [11.4]
330 = 9 [22.9]
430 = 10 [25.4]

If Gagecock vessel center to center dimension is known:

- Find the dimension column that matches the gage connection size and type (example: 1/2" NPT Female union connections).
- Follow this column down to the dimension closest to the required gagecock center to center dimension without exceeding that dimension.
- Take that dimension and the row back to the left to the GAGE MODEL NUMBER column of the style of gage required. This reflects the largest size gage that meets the required gagecock center to center dimension.

If gage model number is known:

- Find gage model under the GAGE MODEL NUMBER column.
- Follow that row to the right until you get to the dimension column matching the gage connection size (example: 1/2" NPT Female union connections).
- This represents the minimum required gagecock vessel center to center for the model of gage selected.



MODEL 330 GAGECOCK SHOWN

PENBERTHY dimensions

Section 2000
Dimensions 2704.7
Issued 04/09
Replaces 01/09

For: **MINIMUM GAGECOCK CENTERS**

Series M or H Recessed Gages with Series 100 or 200
Gagecocks

FOR SIDE CONNECTED GAGES ONLY

GAGE MODEL NUMBER				Visible Glass in inches & [cm]	MINIMUM GAGECOCK VESSEL CENTERS IN INCHES & [CM]					
					1/2" NPT GAGE CONNECTION			3/4" NPT GAGE CONNECTION		
					Standard Female Union 120 or 220 Gagecock with Nipples	Optional Male Union 120 or 220 Gagecock	Standard Female Rigid 130 or 230 Gagecock with Nipples	Optional Female Union 120 or 220 Gagecock	Optional Male Union 120 or 220 Gagecock	Optional Female Rigid 130 or 230 Gagecock with Nipples
Reflex	Transparent									
RMR	RHR	TMR	THR							
1RMR1		1TMR1		3 3/4 [9.5]		5 1/4 [13.3]**			5 1/2 [14.0]**	
1RMR2		1TMR2		4 3/4 [12.1]		6 1/4 [15.9]**			6 1/2 [16.5]**	
1RMR3		1TMR3		5 3/4 [14.6]		7 1/4 [18.4]**			7 1/2 [19.1]**	
1RMR4	1RHR4	1TMR4	1THR4	6 3/4 [17.1]		8 1/4 [21.0]**			8 1/2 [21.6]**	
1RMR5	1RHR5	1TMR5	1THR5	7 7/8 [20.0]		9 3/8 [23.8]**			9 5/8 [24.5]**	
1RMR6	1RHR6	1TMR6	1THR6	9 1/8 [23.2]		10 5/8 [27.0]			10 7/8 [27.6]	
1RMR7	1RHR7	1TMR7	1THR7	10 1/4 [26.0]		11 3/4 [29.8]			12 [30.5]	
1RMR8	1RHR8	1TMR8	1THR8	11 7/8 [30.2]		13 3/8 [34.0]			13 5/8 [34.6]	
1RMR9	1RHR9	1TMR9	1THR9	12 5/8 [32.1]		14 1/8 [35.9]			14 3/8 [36.5]	
2RMR4	2RHR4	2TMR4	2THR4	15 [38.1]		16 1/2 [41.9]			16 3/4 [42.6]	
2RMR5	2RHR5	2TMR5	2THR5	17 1/4 [43.8]		18 3/4 [47.6]			19 [48.3]	
2RMR6	2RHR6	2TMR6	2THR6	19 3/4 [50.2]		21 1/4 [54.0]			21 1/2 [54.6]	
2RMR7	2RHR7	2TMR7	2THR7	22 [55.9]		23 1/2 [59.7]			23 3/4 [60.3]	
2RMR8	2RHR8	2TMR8	2THR8	25 1/4 [64.1]		26 3/4 [67.9]			27 [68.6]	
2RMR9	2RHR9	2TMR9	2THR9	26 3/4 [67.9]		28 1/4 [71.8]			28 1/2 [72.4]	
3RMR6	3RHR6	3TMR6	3THR6	30 3/8 [77.2]		31 7/8 [81.0]			32 1/8 [81.6]	
3RMR7	3RHR7	3TMR7	3THR7	33 3/4 [85.7]		35 1/4 [89.5]			35 1/2 [90.2]	
3RMR8	3RHR8	3TMR8	3THR8	38 5/8 [98.1]		40 1/8 [101.9]			40 3/8 [102.6]	
3RMR9	3RHR9	3TMR9	3THR9	40 7/8 [103.8]		42 3/8 [107.6]			42 5/8 [108.3]	
4RMR7	4RHR7	4TMR7	4THR7	45 1/2 [115.6]		47 [119.4]			47 1/4 [120.6]	
4RMR8	4RHR8	4TMR8	4THR8	52 [132.1]		53 1/2 [135.9]			53 3/4 [136.5]	
4RMR9	4RHR9	4TMR9	4THR9	55 [139.7]		56 1/2 [146.5]			56 3/4 [144.2]	
5RMR7	5RHR7	5TMR7	5THR7	57 1/4 [145.4]		58 3/4 [149.2]			59 [149.9]	
5RMR8	5RHR8	5TMR8	5THR8	65 3/8 [166.1]		66 7/8 [169.9]			67 1/8 [170.5]	
5RMR9	5RHR9	5TMR9	5THR9	69 1/8 [175.6]		70 5/8 [179.4]			70 7/8 [180.0]	
6RMR8	6RHR8	6TMR8	6THR8	78 3/4 [200.0]		80 1/4 [203.8]			80 1/2 [204.5]	
6RMR9	6RHR9	6TMR9	6THR9	83 1/4 [211.5]		84 3/4 [215.3]			85 [215.9]	
7RMR8	7RHR8	7TMR8	7THR8	92 1/8 [234.0]		93 5/8 [237.8]			93 7/8 [238.5]	
7RMR9	7RHR9	7TMR9	7THR9	97 3/8 [247.3]		98 7/8 [251.1]			99 1/8 [251.8]	
8RMR8	8RHR8	8TMR8	8THR8	105 1/2 [268.0]		107 [271.8]			107 1/4 [272.4]	
8RMR9	8RHR9	8TMR9	8THR9	111 1/2 [283.2]		113 [287.0]			113 1/4 [287.7]	
9RMR8	9RHR8	9TMR8	9THR8	118 7/8 [301.9]		120 3/8 [305.8]			120 5/8 [306.4]	
9RMR9	9RHR9	9TMR9	9THR9	125 5/8 [319.1]		127 1/8 [322.9]			127 3/8 [323.6]	
10RMR8	10RHR8	10TMR8	10THR8	132 1/4 [335.9]		133 3/4 [339.7]			134 [340.4]	
10RMR9	10RHR9	10TMR9	10THR9	139 3/4 [355.0]		141 1/4 [358.8]			141 1/2 [359.4]	

**Minimum allowable Gagecock Vessel C-C is determined by assembly clearance required between upper and lower gagecocks.

**Minimum Gagecock Vessel C-C for specified Gage Model with the following gagecocks:

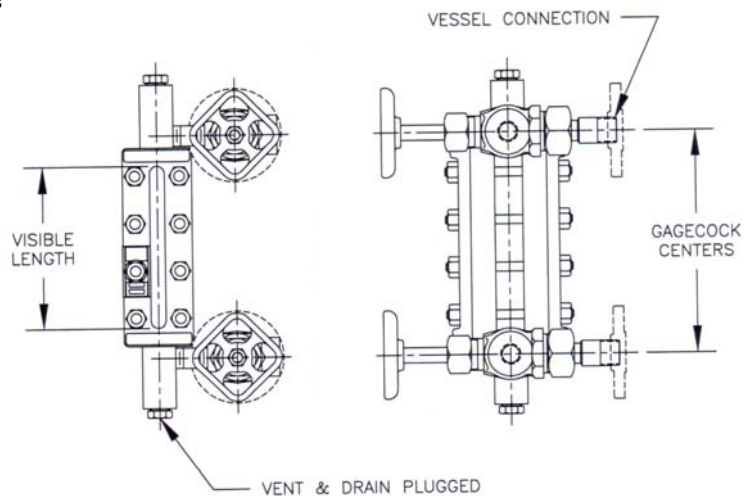
120/220 = 4 1/2 [11.4]
130 = 9 [22.9]
230 = 10 [25.4]

If you know your vessel center to center dimension then:

- Find the dimension column that matches your gage connection size and type (example: 1/2" NPT Female union connections)
- Follow that column down to the dimension closest to your required center to center dimension without exceeding that dimension.
- Take that dimension and the row back to the left to the GAGE MODEL NUMBER column of the style of gage required. This represents the largest size gage that meets the required center to center dimension.

If you know the gage model number then:

- Find your model gage under the GAGE MODEL NUMBER column.
- Follow that row to the right to the dimension column that matches your gage size and type of gage connections (example: 1/2" NPT Female union connections)
- This represents the minimum required vessel centers for the model of gage selected.



MODEL 130 GAGECOCK SHOWN

PENBERTHY dimensions

Section 2000
Dimensions 2704.8
Issued 04/09
Replaces 01/09

For: **MINIMUM GAGECOCK CENTERS**

Series M or H Recessed Gages with Series 300 or 400

FOR SIDE CONNECTED GAGES ONLY

GAGE MODEL NUMBER				Visible Glass inches & [cm]	MINIMUM GAGECOCK VESSEL CENTERS IN INCHES & [CM]					
					1/2" NPT GAGE CONNECTION			3/4" NPT GAGE CONNECTION		
					Standard Female Union 320 or 420 Gagecock with Nipples	Optional Male Union 320 or 420 Gagecock	Standard Female Rigid 330 or 430 Gagecock with Nipples	Optional Female Union 320 or 420 Gagecock	Optional Male Union 320 or 420 Gagecock	Optional Female Rigid 330 or 430 Gagecock with Nipples
Reflex		Transparent								
RMR	RHR	TMR	THR							
1RMR1		1TMR1		3 3/4 [9.5]	Not Available			Not Available		
1RMR2		1TMR2		4 3/4 [12.1]	4 3/4 [12.1]**			5 [12.7]**		
1RMR3		1TMR3		5 3/4 [14.6]	5 3/4 [14.6]**			6 [15.2]**		
1RMR4	1RHR4	1TMR4	1THR4	6 3/4 [17.1]	6 3/4 [17.1]**			7 [17.8]**		
1RMR5	1RHR5	1TMR5	1THR5	7 7/8 [20.0]	7 7/8 [20.0]**			8 1/8 [20.7]**		
1RMR6	1RHR6	1TMR6	1THR6	9 1/8 [23.2]	9 1/8 [23.2]**			9 3/8 [23.8]**		
1RMR7	1RHR7	1TMR7	1THR7	10 1/4 [26.0]	10 1/4 [26.0]**			10 1/2 [26.0]		
1RMR8	1RHR8	1TMR8	1THR8	11 7/8 [30.2]	11 7/8 [30.2]**			12 1/8 [30.8]		
1RMR9	1RHR9	1TMR9	1THR9	12 5/8 [32.1]	12 5/8 [32.1]**			12 7/8 [32.7]		
2RMR4	2RHR4	2TMR4	2THR4	15 [38.1]	15 [38.1]**			15 1/4 [38.7]		
2RMR5	2RHR5	2TMR5	2THR5	17 1/4 [43.8]	17 1/4 [43.8]**			17 1/2 [44.5]		
2RMR6	2RHR6	2TMR6	2THR6	19 3/4 [50.2]	19 3/4 [50.2]**			20 [50.8]		
2RMR7	2RHR7	2TMR7	2THR7	22 [55.9]	22 [55.9]**			22 1/4 [56.5]		
2RMR8	2RHR8	2TMR8	2THR8	25 1/4 [64.1]	25 1/4 [64.1]**			25 1/2 [64.8]		
2RMR9	2RHR9	2TMR9	2THR9	26 3/4 [67.9]	26 3/4 [67.9]**			27 [68.6]		
3RMR6	3RHR6	3TMR6	3THR6	30 3/8 [77.2]	30 3/8 [77.2]**			30 5/8 [77.8]		
3RMR7	3RHR7	3TMR7	3THR7	33 3/4 [85.7]	33 3/4 [85.7]**			34 [86.4]		
3RMR8	3RHR8	3TMR8	3THR8	38 5/8 [98.1]	38 5/8 [98.1]**			38 7/8 [98.7]		
3RMR9	3RHR9	3TMR9	3THR9	40 7/8 [103.8]	40 7/8 [103.8]**			41 1/8 [104.5]		
4RMR7	4RHR7	4TMR7	4THR7	45 1/2 [115.6]	45 1/2 [115.6]**			45 3/4 [116.2]		
4RMR8	4RHR8	4TMR8	4THR8	52 [132.1]	52 [132.1]**			52 1/4 [132.7]		
4RMR9	4RHR9	4TMR9	4THR9	55 [139.7]	55 [139.7]**			55 1/4 [140.3]		
5RMR7	5RHR7	5TMR7	5THR7	57 1/4 [145.4]	57 1/4 [145.4]**			57 1/2 [146.1]		
5RMR8	5RHR8	5TMR8	5THR8	65 3/8 [166.1]	65 3/8 [166.1]**			65 5/8 [166.7]		
5RMR9	5RHR9	5TMR9	5THR9	69 1/8 [175.6]	69 1/8 [175.6]**			69 3/8 [176.2]		
6RMR8	6RHR8	6TMR8	6THR8	78 3/4 [200.0]	78 3/4 [200.0]**			79 [200.7]		
6RMR9	6RHR9	6TMR9	6THR9	83 1/4 [211.5]	83 1/4 [211.5]**			83 1/2 [212.1]		
7RMR8	7RHR8	7TMR8	7THR8	92 1/8 [234.0]	92 1/8 [234.0]**			92 3/8 [234.6]		
7RMR9	7RHR9	7TMR9	7THR9	97 3/8 [247.3]	97 3/8 [247.3]**			97 5/8 [248.0]		
8RMR8	8RHR8	8TMR8	8THR8	105 1/2 [268.0]	105 1/2 [268.0]**			105 3/4 [268.6]		
8RMR9	8RHR9	8TMR9	8THR9	111 1/2 [283.2]	111 1/2 [283.2]**			111 3/4 [283.8]		
9RMR8	9RHR8	9TMR8	9THR8	118 7/8 [301.9]	118 7/8 [301.9]**			119 1/8 [302.6]		
9RMR9	9RHR9	9TMR9	9THR9	125 5/8 [319.1]	125 5/8 [319.1]**			125 7/8 [319.7]		
10RMR8	10RHR8	10TMR8	10THR8	132 1/4 [335.9]	132 1/4 [335.9]**			132 1/2 [335.9]		
10RMR9	10RHR9	10TMR9	10THR9	139 3/4 [355.0]	139 3/4 [355.0]**			140 [355.6]		

**Minimum allowable Gagecock Vessel C-C is determined by assembly clearance required between upper and lower gagecocks.

**Minimum Gagecock Vessel C-C for specified Gage Model with the following gagecocks:

320/420 = 4 1/2 [11.4]

330 = 9 [22.9]

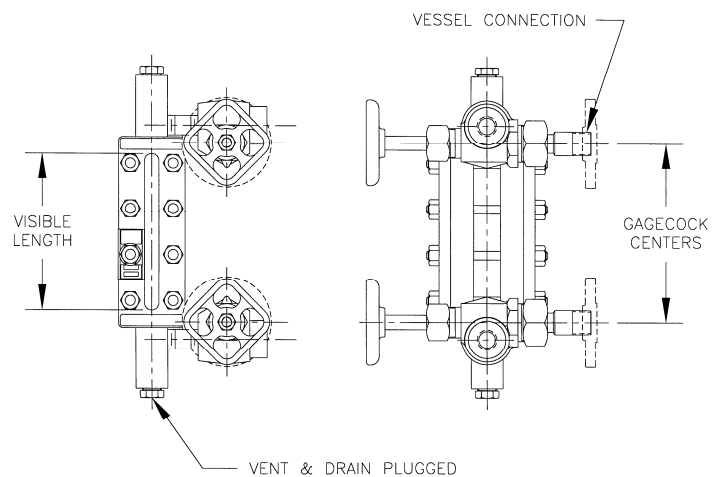
430 = 10 [25.4]

If you know your vessel center to center dimension then:

1. Find the dimension column that matches your gage connection size and type (example: 1/2" NPT Female union connections)
2. Follow that column down to the dimension closest to your required center to center dimension without exceeding that dimension.
3. Take that dimension and the row back to the left to the GAGE MODEL NUMBER column of the style of gage required.
This represents the largest size gage that meets the required center to center dimension.

If you know the gage model number then:

1. Find your model gage under the GAGE MODEL NUMBER column.
2. Follow that row to the right to the dimension column that matches your gage size and type of gage connections (example: 1/2" NPT Female union connections)
3. This represents the minimum required vessel centers for the model of gage selected.



MODEL 330 GAGECOCK SHOWN