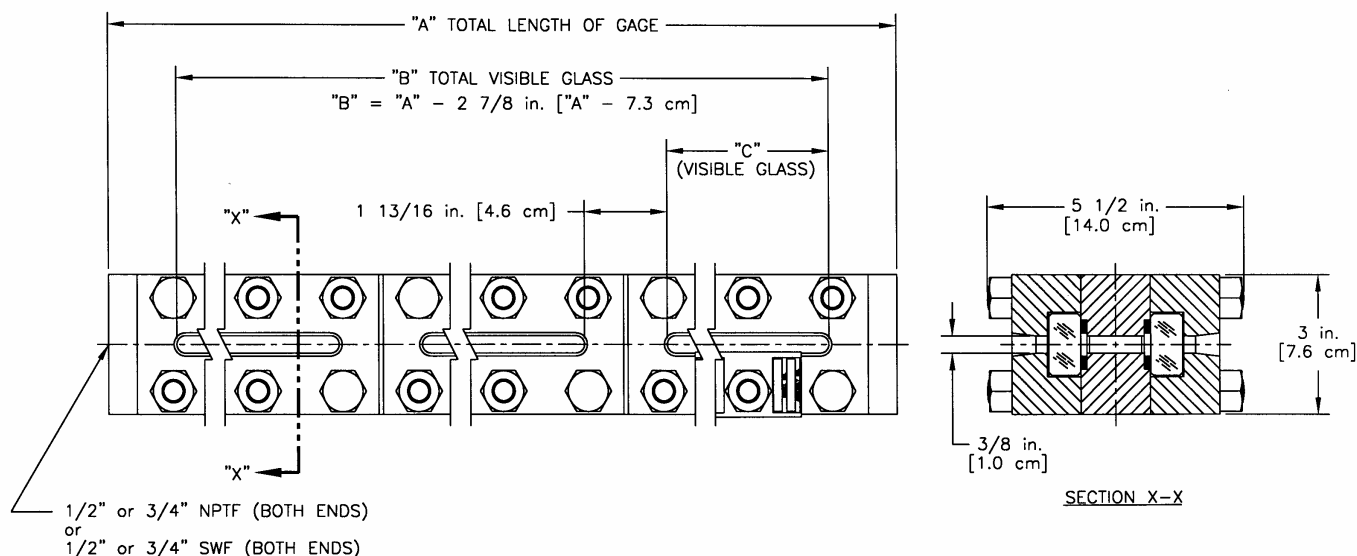


PENBERTHY dimensions

Section 2000
Dimensions 2713
Issued 07/05
Replaces 04/02

For: MODEL TU GAGE – END CONNECTED



Glass Size	Dim. "C" in inches & [cm]	Dimension "A" in Inches [cm]										Quantity Per Section			
		Number of Sections										Bolt	Stud	Nut	
		1	2	3	4	5	6	7	8	9	10				
1	3 17/32 [9.0]	6 1/2 [16.5]	11 3/4 [29.8]										4	4	8
3	5 17/32 [14.0]	8 1/2 [21.6]	15 3/4 [40.0]	23 3/32 [58.7]									4	6	12
4	6 17/32 [16.6]	9 1/2 [24.1]	17 3/4 [45.1]	26 3/32 [66.3]	34 7/16 [87.5]								4	6	12
5	7 21/32 [19.4]	10 5/8 [27.0]	20 [50.8]	29 15/32 [74.9]	38 15/16 [98.9]	48 13/32 [123.0]	57 7/8 [147.0]	67 11/32 [171.1]	76 13/16 [195.1]	86 9/32 [219.2]	95 3/4 [243.2]		4	8	16
7	10 1/32 [25.5]	13 [33.0]	24 3/4 [62.9]	36 19/32 [92.9]	48 7/16 [123.0]	60 9/32 [153.1]	72 1/8 [183.2]	83 31/32 [213.3]	95 13/16 [243.4]	107 21/32 [273.4]	119 1/2 [303.5]		4	10	20

Unit designation is assigned as follows:

Example: 3TU5 Gage

The first number equals the number of gage sections (3);

The next two letters indicate gage model (TU – Transparent Ultra High Pressure);

The last number denotes glass size (5).