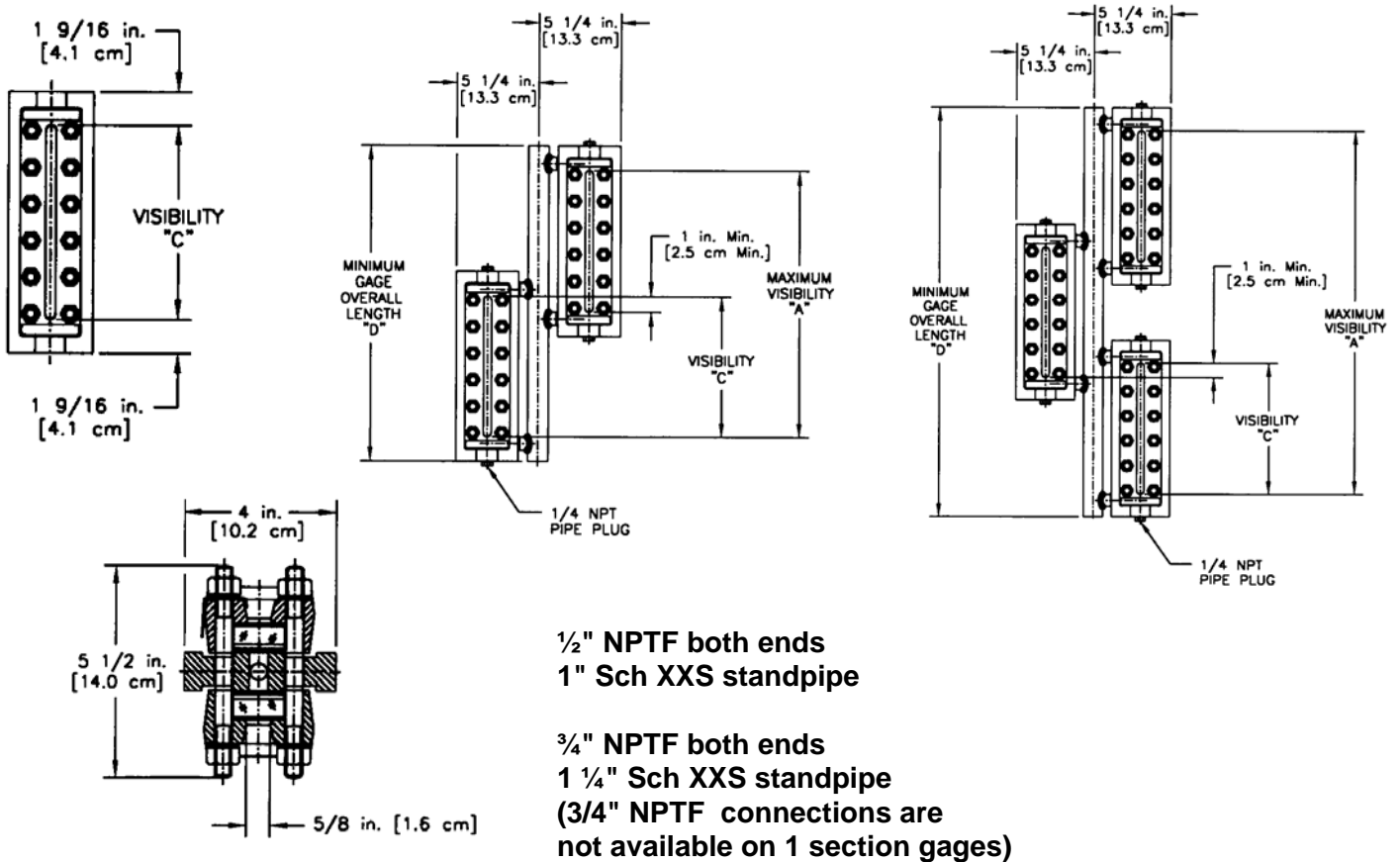


PENBERTHY dimensions

Section 2000
Dimensions 2716.1
Issued 07/08
Replaces 07/05

For: MODEL TSL GAGE - END CONNECTED



TO FIGURE OVERALL LENGTHS "D" OF MULTIPLE SECTION GAGES

FOR TSL GAGES WITH 1/2" NPTF END CONNECTIONS:

Minimum Gage Overall Length "D" = Maximum Visibility "A" + 3 1/8 in. [7.9 cm]

FOR TSL GAGES WITH 3/4" NPTF END CONNECTIONS:

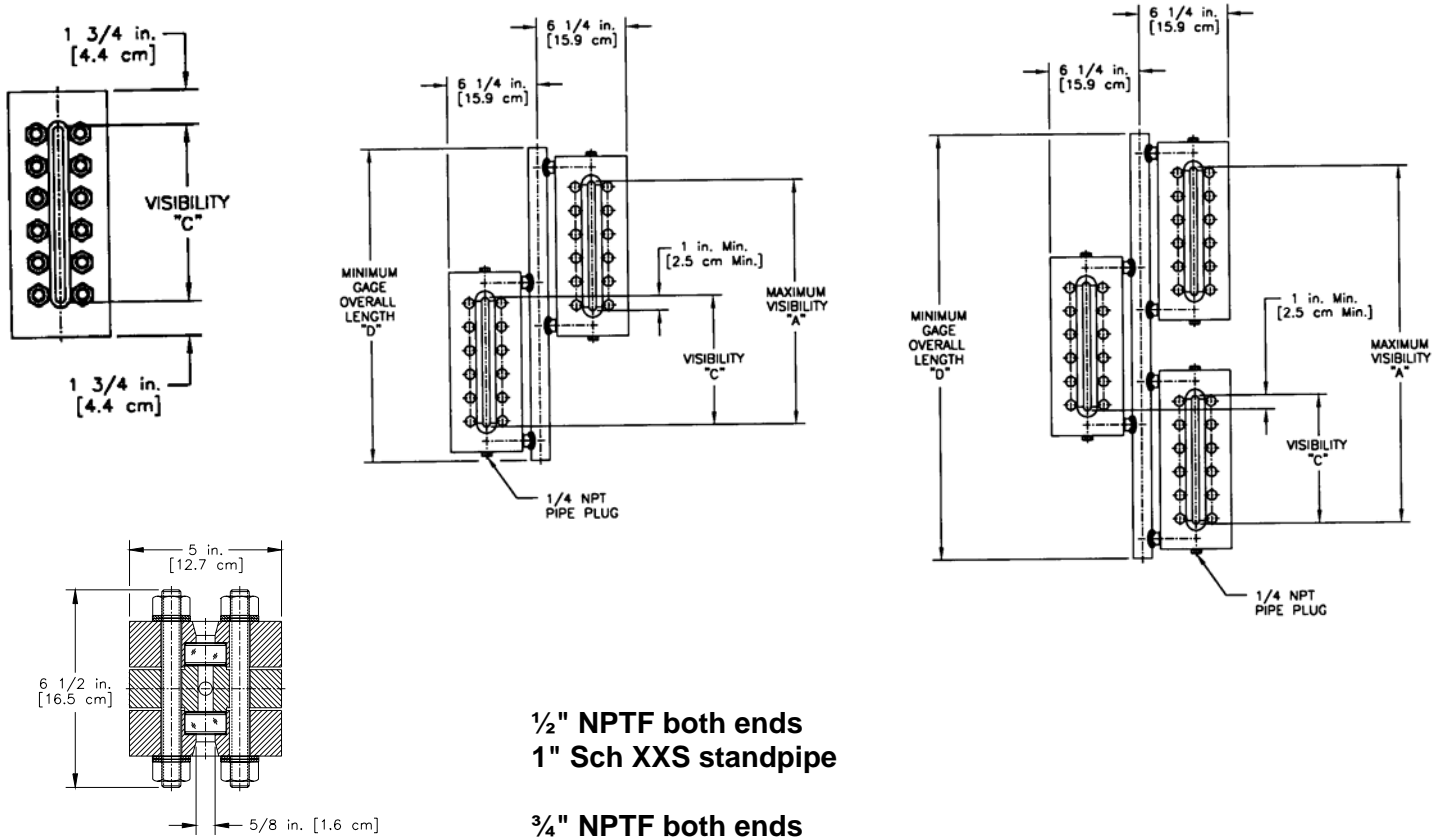
Minimum Gage Overall Length "D" = Maximum Visibility "A" + 3 5/8 in. [9.2 cm]

| Glass Size | Dim "C" Inches [cm] | Dimension "A" inches [cm] | | | | Quantity Per Section | |
|------------|------------------------|---------------------------|---------------|---------------|---------------|----------------------|-----|
| | | Number of Sections | | | | | |
| | | 1 | 2 | 3 | 4 | Stud | Nut |
| 6 | 9 [22.9] | N/A | 17 [43.2] | 25 [63.5] | 33 [83.8] | 12 | 24 |
| 7 | 10 1/8 [25.7] | N/A | 19 1/4 [48.9] | 28 3/8 [72.1] | 37 1/2 [95.3] | 12 | 24 |
| 9 | 12 1/2 [31.8] | N/A | 24 [61.0] | 35 1/2 [90.2] | 47 [119.4] | 14 | 28 |

PENBERTHY dimensions

Section 2000
Dimensions 2716.2
Issued 07/08
Replaces 07/05

For: **MODEL TSM GAGE – END CONNECTED**



TO FIGURE OVERALL LENGTHS "D" OF MULTIPLE SECTION GAGES

FOR TSM GAGES WITH 1/2" NPTF AND 3/4" NPTF END CONNECTIONS:

Minimum Gage Overall Length "D" = Maximum Visibility "A" + 4 3/4 in. [12.1 cm]

| Glass Size | Dim "C" Inches [cm] | Dimension "A" inches [cm] | | | | Quantity Per Section | |
|------------|---------------------|---------------------------|---------------|---------------|---------------|----------------------|-----|
| | | Number of Sections | | | | | |
| | | 1 | 2 | 3 | 4 | Stud | Nut |
| 6 | 9 [22.9] | N/A | 17 [43.2] | 25 [63.5] | 33 [83.8] | 12 | 24 |
| 7 | 10 1/8 [25.7] | N/A | 19 1/4 [48.9] | 28 3/8 [72.1] | 37 1/2 [95.3] | 14 | 28 |
| 9 | 12 1/2 [31.8] | N/A | 24 [61.0] | 35 1/2 [90.2] | 47 [119.4] | 16 | 32 |

PENBERTHY

dimensions

Section 2000
 Dimensions 2716.3
 Issued 07/08
 Replaces 07/05

Minimum "D" Calculations for End Connect TSL and TSM Gages

TSL 1/2" NPTF END = "A" + 3 1/8 in. [7.9 cm]

TSL 3/4" NPTF END = "A" + 3 5/8 in. [9.2 cm]

TSM 1/2" or 3/4" NPTF = "A" + 4 3/4 in. [12.1 cm]

| Number of Sections | Glass Size | Dim "A" inches [cm] | Dim "C" inches [cm] |
|--------------------|------------|---------------------|---------------------|
| 1 | 6 | N/A | 9 [22.9] |
| 1 | 7 | N/A | 10 1/8 [25.7] |
| 1 | 9 | N/A | 12 1/2 [31.8] |
| 2 | 6 | 17 [43.2] | 9 [22.9] |
| 2 | 7 | 19 1/4 [48.9] | 10 1/8 [25.7] |
| 2 | 9 | 24 [61.0] | 12 1/2 [31.8] |
| 3 | 6 | 25 [63.5] | 9 [22.9] |
| 3 | 7 | 28 3/8 [72.1] | 10 1/8 [25.7] |
| 3 | 9 | 35 1/2 [90.2] | 12 1/2 [31.8] |
| 4 | 6 | 33 [83.8] | 9 [22.9] |
| 4 | 7 | 37 1/2 [95.3] | 10 1/8 [25.7] |
| 4 | 9 | 47 [119.4] | 12 1/2 [31.8] |
| 5 | 6 | 41 [104.1] | 9 [22.9] |
| 5 | 7 | 46 5/8 [118.4] | 10 1/8 [25.7] |
| 5 | 9 | 58 1/2 [148.6] | 12 1/2 [31.8] |
| 6 | 6 | 49 [124.5] | 9 [22.9] |
| 6 | 7 | 55 3/4 [141.6] | 10 1/8 [25.7] |
| 6 | 9 | 70 [177.8] | 12 1/2 [31.8] |
| 7 | 6 | 57 [144.8] | 9 [22.9] |
| 7 | 7 | 64 7/8 [164.8] | 10 1/8 [25.7] |
| 7 | 9 | 81 1/2 [207.0] | 12 1/2 [31.8] |
| 8 | 6 | 65 [165.1] | 9 [22.9] |
| 8 | 7 | 74 [188.0] | 10 1/8 [25.7] |
| 8 | 9 | 93 [236.2] | 12 1/2 [31.8] |
| 9 | 6 | 73 [185.4] | 9 [22.9] |
| 9 | 7 | 83 1/8 [211.1] | 10 1/8 [25.7] |
| 9 | 9 | 104 1/2 [265.4] | 12 1/2 [31.8] |
| 10 | 6 | 81 [205.7] | 9 [22.9] |
| 10 | 7 | 92 1/4 [234.3] | 10 1/8 [25.7] |
| 10 | 9 | 116 [294.6] | 12 1/2 [31.8] |