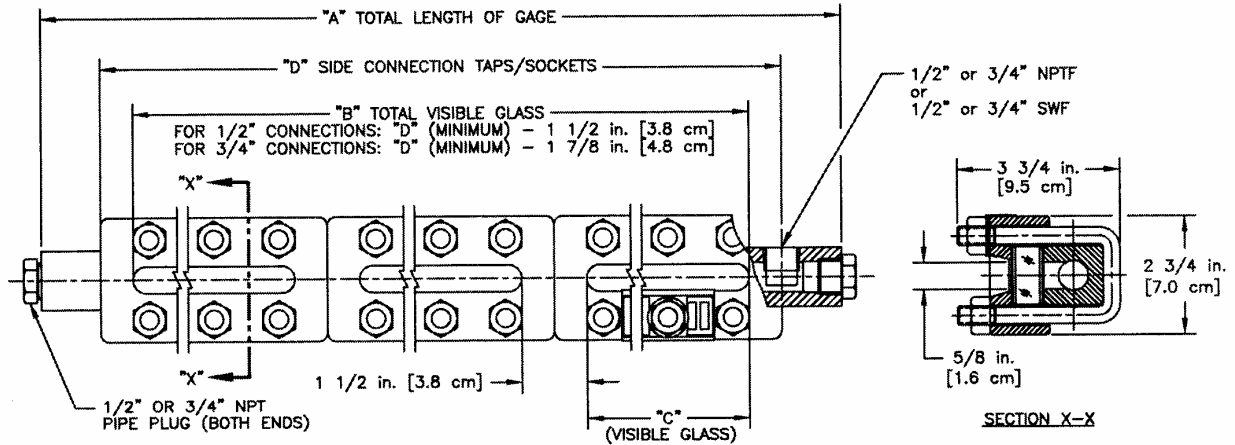


PENBERTHY dimensions

Section 2000
Dimensions 2720.1
Issued 07/05
Replaces 11/95

For: **MODEL RL GAGE – Side Connected**



Unit Designation is assigned as follows:
Example: JRL 6 Gage
The first number equals the number of gage sections (3);
the next two letters indicate gage model (RL – Reflex Low Pressure)
the last number denotes the gage size (6).

Glass Size	Minimum and Maximum Dimension "D" in Inches [cm] for 1/2" NPT/Socketweld Connections										
	Centers Available in 1/8" [0.3cm] Increments Between Minimum and Maximum										
	Standard Side Connection is to the Right of the Gage Vision										
		Number of Sections									
		1	2	3	4	5	6	7	8	9	10
1	Min	5 1/4 [13.3]									
	Max	7 5/8 [19.4]									
2	Min	6 1/4 [15.9]									
	Max	8 5/8 [21.9]									
3	Min	7 1/4 [18.4]									
	Max	9 5/8 [24.4]									
4	Min	8 1/4 [21.0]	16 1/2 [41.9]								
	Max	10 3/4 [27.3]	20 1/8 [51.1]								
5	Min	9 3/8 [23.8]	18 3/4 [47.6]								
	Max	12 [30.5]	22 5/8 [57.5]								
6	Min	10 5/8 [27.0]	21 1/4 [54.0]	31 7/8 [81.0]							
	Max	13 1/8 [33.3]	24 7/8 [63.2]	36 5/8 [93.0]							
7	Min	11 3/4 [29.8]	23 1/2 [59.7]	35 1/4 [89.5]	47 [119.4]	58 3/4 [149.2]					
	Max	14 3/4 [37.5]	28 1/8 [71.4]	41 1/4 [104.8]	54 7/8 [139.4]	68 1/4 [173.4]					
8	Min	13 3/8 [34.0]	26 3/4 [67.9]	40 1/8 [101.9]	53 1/2 [135.9]	66 7/8 [169.9]	80 1/4 [203.8]	93 5/8 [237.8]	107 [271.8]	120 3/8 [305.7]	133 3/4 [339.7]
	Max	15 1/2 [39.4]	29 5/8 [75.2]	43 3/4 [111.1]	57 7/8 [147.0]	72 [182.9]	84 5/8 [214.9]	98 3/4 [250.8]	112 7/8 [286.7]	127 [322.6]	141 1/8 [358.5]
9	Min	14 1/8 [35.9]	28 1/4 [71.8]	42 3/8 [107.6]	56 1/2 [143.5]	70 5/8 [179.4]	84 3/4 [215.3]	98 7/8 [251.1]	113 [287.0]	127 1/8 [322.9]	141 1/4 [358.8]
	Max	17 7/8 [45.4]	33 1/4 [84.5]	48 3/8 [122.9]	60 1/8 [152.7]	81 5/8 [207.3]	93 1/2 [237.5]	106 7/8 [271.5]	120 1/4 [305.4]	133 5/8 [339.4]	147 [373.4]

NOTE:
For minimum 3/4" NPT/socketweld connections - Add 3/8" [1.0 cm] to dimension "D" shown below
For maximum 3/4" NPT/socketweld connections - Subtract 3/4" [1.9 cm] from dimension "D" shown below

CONSULT FACTORY FOR MINIMUM FRONT OR BACK CONNECTIONS

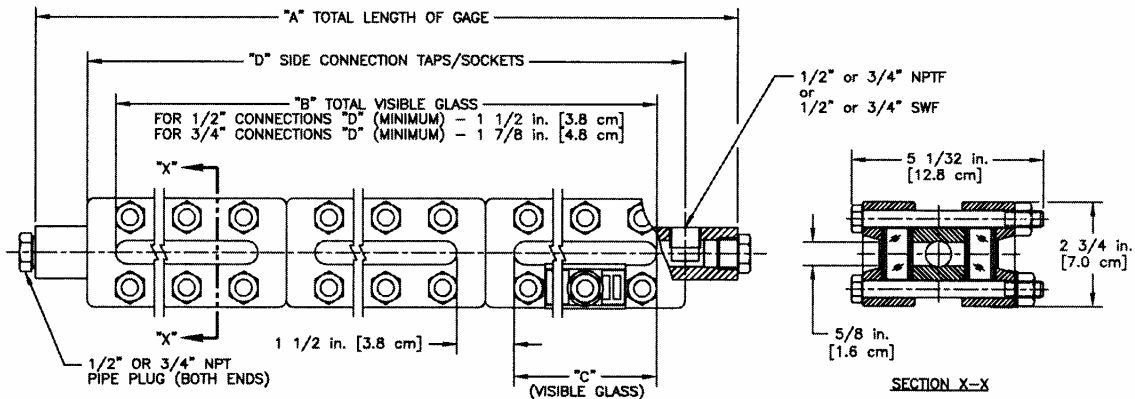
Glass Size	Dim. "C" in inches [cm]	Dimension "A" in Inches [cm] 1/2" and 3/4" NPT/socketweld Connections										Quantity Per Section			
		Number of Sections										Bolt	Nut		
		1	2	3	4	5	6	7	8	9	10				
1	3 3/4 [9.5]	10 3/8 [26.4]												3	6
2	4 3/4 [12.1]	11 3/8 [28.9]												3	6
3	5 3/4 [14.6]	12 3/8 [31.4]												4	8
4	6 3/4 [17.1]	13 1/2 [34.3]	22 7/8 [58.1]											5	10
5	7 7/8 [20.0]	14 3/4 [37.5]	25 3/8 [64.5]											5	10
6	9 1/8 [23.2]	15 7/8 [40.3]	27 5/8 [70.2]	39 3/8 [100.0]										6	12
7	10 1/4 [26.0]	17 1/2 [44.5]	30 7/8 [78.4]	44 1/4 [112.4]	57 5/8 [146.4]	71 [180.3]								7	14
8	11 7/8 [30.2]	18 1/4 [46.4]	32 3/8 [82.2]	46 1/2 [118.1]	60 5/8 [154.0]	74 3/4 [189.9]	***	***	***	***	***			7	14
9	12 5/8 [32.1]	20 5/8 [52.4]	36 [91.5]	51 1/8 [129.9]	62 7/8 [159.7]	84 3/8 [214.3]	***	***	***	***	***			8	16

NOTE:
*** For 1/2" NPT or socketweld connections: Dimension "D" + 2 3/4" [7.0 cm]
*** For 3/4" NPT or socketweld connections: Dimension "D" + 3 1/2" [8.9 cm]

PENBERTHY dimensions

Section 2000
Dimensions 2720.2
Issued 07/05
Replaces 11/95

For: MODEL TL GAGE – Side Connected



Unit Designation is assigned as follows:
Example: 3TL 6 Gage
The first number equals the number of gage sections (3);
the next two letters indicate gage model (TL – Transparent Low Pressure)
the last number denotes the glass size (6).

Glass Size	Minimum and Maximum Dimension "D" in Inches [cm] for 1/2" NPT/Socketweld Connections Centers Available in 1/8" [0.3cm] Increments Between Minimum and Maximum Standard Side Connection is to the Right of the Gage Vision																			
	Number of Sections																			
	1	2	3	4	5	6	7	8	9	10										
1	Min	5 1/4 [13.3]																		
	Max	7 5/8 [19.4]																		
2	Min	6 1/4 [15.9]																		
	Max	8 5/8 [21.9]																		
3	Min	7 1/4 [18.4]																		
	Max	9 5/8 [24.4]																		
4	Min	8 1/4 [21.0]	16 1/2 [41.9]																	
	Max	10 3/4 [27.3]	20 1/8 [51.1]																	
5	Min	9 3/8 [23.8]	18 3/4 [47.6]																	
	Max	12 [30.5]	22 5/8 [57.5]																	
6	Min	10 5/8 [27.0]	21 1/4 [54.0]	31 7/8 [81.0]																
	Max	13 1/8 [33.3]	24 7/8 [63.2]	36 5/8 [93.0]																
7	Min	11 3/4 [29.8]	23 1/2 [59.7]	35 1/4 [89.5]	47 [119.4]	58 3/4 [149.2]														
	Max	14 3/4 [37.5]	28 1/8 [71.4]	41 1/4 [104.8]	54 7/8 [139.4]	68 1/4 [173.4]														
8	Min	13 3/8 [34.0]	26 3/4 [67.9]	40 1/8 [101.9]	53 1/2 [135.9]	66 7/8 [169.9]	80 1/4 [203.8]	93 5/8 [237.8]	107 [271.8]	120 3/8 [305.7]	133 3/4 [339.7]									
	Max	15 1/2 [39.4]	29 5/8 [75.2]	43 3/4 [111.1]	57 7/8 [147.0]	72 [182.9]	84 5/8 [214.9]	98 3/4 [250.8]	112 7/8 [286.7]	127 [322.6]	141 1/8 [358.5]									
9	Min	14 1/8 [35.9]	28 1/4 [71.8]	42 3/8 [107.6]	56 1/2 [143.5]	70 5/8 [179.4]	84 3/4 [215.3]	98 7/8 [251.1]	113 [287.0]	127 1/8 [322.9]	141 1/4 [358.8]									
	Max	17 7/8 [45.4]	33 1/4 [84.5]	48 3/8 [122.9]	60 1/8 [152.7]	74 1/8 [188.6]	88 1/2 [224.5]	102 3/8 [260.4]	116 1/2 [294.3]	130 1/4 [326.1]	144 1/2 [363.0]									

NOTE:
For minimum 3/4" NPT/socketweld connections - Add 3/8" [1.0 cm] to dimension "D" shown below
For maximum 3/4" NPT/socketweld connections - Subtract 3/4" [1.9 cm] from dimension "D" shown below

CONSULT FACTORY FOR MINIMUM FRONT OR BACK CONNECTIONS

Glass Size	Dim. "C" in inches [cm]	Dimension "A" in Inches [cm] 1/2" and 3/4" NPT/socketweld Connections										Quantity Per Section				
		Number of Sections										Bolt	Nut			
		1	2	3	4	5	6	7	8	9	10					
1	3 3/4 [9.5]	10 3/8 [26.4]													6	6
2	4 3/4 [12.1]	11 3/8 [28.9]													6	6
3	5 3/4 [14.6]	12 3/8 [31.4]													8	8
4	6 3/4 [17.1]	13 1/2 [34.3]	22 7/8 [58.1]												10	10
5	7 7/8 [20.0]	14 3/4 [37.5]	25 3/8 [64.5]												10	10
6	9 1/8 [23.2]	15 7/8 [40.3]	27 5/8 [70.2]	39 3/8 [100.0]											12	12
7	10 1/4 [26.0]	17 1/2 [44.5]	30 7/8 [78.4]	44 1/4 [112.4]	57 5/8 [146.4]	71 [180.3]									14	14
8	11 7/8 [30.2]	18 1/4 [46.4]	32 3/8 [82.2]	46 1/2 [118.1]	60 5/8 [154.0]	74 3/4 [189.9]	***	***	***	***	***				14	14
9	12 5/8 [32.1]	20 5/8 [52.4]	36 [91.5]	51 1/8 [129.9]	62 7/8 [159.7]	84 3/8 [214.3]	***	***	***	***	***				16	16