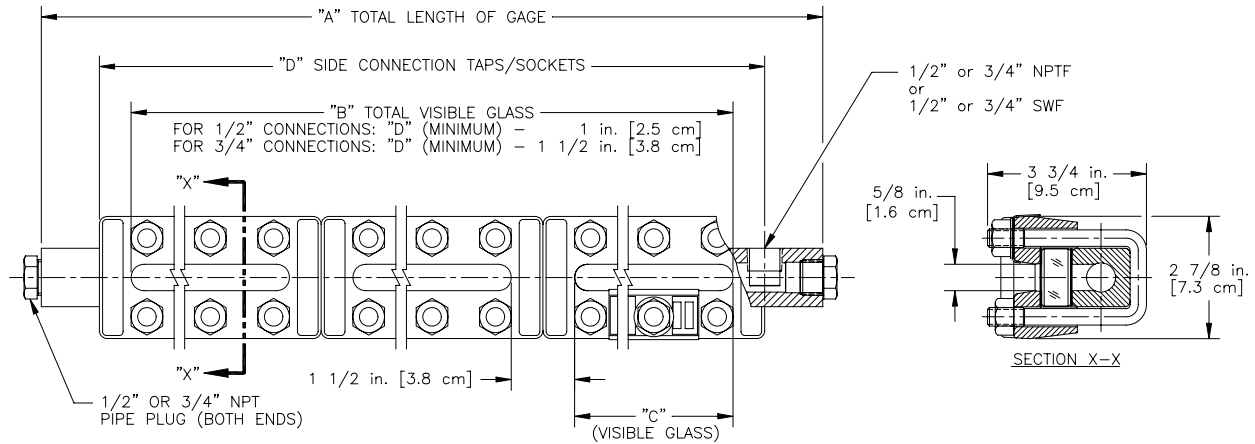


# PENBERTHY dimensions

Section 2000  
Dimensions 2721.1  
Issued 04/09  
Replaces 08/07

For: **MODEL RM GAGE – Side Connected**



Unit Designation is assigned as follows:

Example: 3RM6 Gage

The first number equals the number of gage sections (3);

The next two letters indicate gage model (RM – Reflex Medium Pressure)

The last number denotes the glass size (6).

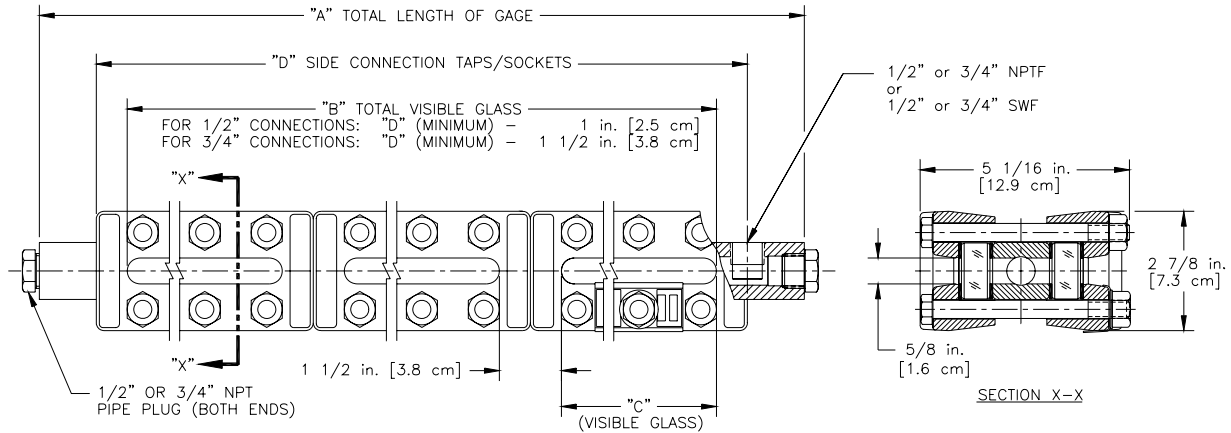
Glass Size	Minimum and Maximum Dimension "D" in Inches [cm] for 1/2" NPT/Socketweld Connections Centers Available in 1/8" [0.3 cm] Increments Between Minimum and Maximum Standard Side Connection is to the Right of the Gage Vision																		
	Number of Sections																		
	1	2	3	4	5	6	7	8	9	10									
1	Min Max	4 3/4 [12.1] 7 5/8 [19.4]	NOTE: For minimum 3/4" NPT/socketweld connections - Add 1/2" [1.3 cm] to dimension "D" shown below For maximum 3/4" NPT/socketweld connections - Subtract 3/4" [1.9 cm] from dimension "D" shown below  CONSULT FACTORY FOR MINIMUM FRONT OR BACK CONNECTIONS																
2	Min Max	5 3/4 [14.6] 8 5/8 [21.9]																	
3	Min Max	6 3/4 [17.1] 9 5/8 [24.4]																	
4	Min Max	7 3/4 [19.7] 10 3/4 [27.3]									16 [40.6] 20 1/8 [51.1]								
5	Min Max	8 7/8 [22.5] 12 [30.5]									18 1/4 [46.4] 22 5/8 [57.5]								
6	Min Max	10 1/8 [25.7] 13 1/8 [33.3]									20 3/4 [52.7] 24 7/8 [63.2]	31 3/8 [79.7] 36 5/8 [93.0]							
7	Min Max	11 1/4 [28.6] 14 3/4 [37.5]									23 [58.4] 28 1/8 [71.4]	34 3/4 [88.3] 41 1/4 [104.8]	46 1/2 [118.1] 54 7/8 [139.4]	58 1/4 [148.0] 68 1/4 [173.4]					
8	Min Max	12 7/8 [32.7] 15 1/2 [39.4]									26 1/4 [66.7] 29 5/8 [75.2]	39 5/8 [100.6] 43 3/4 [111.1]	53 [134.6] 57 7/8 [147.0]	66 3/8 [168.6] 72 [182.9]	79 3/4 [202.6] 84 1/8 [213.7]	93 1/8 [236.5] 98 1/4 [249.6]	106 1/2 [270.5] 112 3/8 [285.4]	119 7/8 [304.5] 126 1/2 [321.3]	133 1/4 [338.5] 140 5/8 [357.2]
9	Min Max	13 5/8 [34.6] 17 7/8 [45.4]									27 3/4 [70.5] 33 1/4 [84.5]	41 7/8 [106.4] 48 3/8 [122.9]	56 [142.2] 60 1/8 [152.7]	70 1/8 [178.1] 81 5/8 [207.3]	84 1/4 [214.0] 93 [236.2]	98 3/8 [249.9] 106 3/8 [270.2]	112 1/2 [285.8] 119 3/4 [304.2]	126 5/8 [321.6] 133 1/8 [338.1]	140 3/4 [357.5] 146 1/2 [372.1]

Glass Size	Dim. "C" in inches [cm]	Dimension "A" in Inches [cm] 1/2" and 3/4" NPT/Socketweld Connections										Quantity Per Section											
		Number of Sections										Bolt	Nut										
		1	2	3	4	5	6	7	8	9	10												
1	3 3/4 [9.5]	10 3/8 [26.4]	NOTE: *** For 1/2" NPT or socketweld connections: Dimension "D" + 2 3/4" [7.0 cm] *** For 3/4" NPT or socketweld connections: Dimension "D" + 3 1/2" [8.9 cm]										3	6									
2	4 3/4 [12.1]	11 3/8 [28.9]											3	6									
3	5 3/4 [14.6]	12 3/8 [31.4]											4	8									
4	6 3/4 [17.1]	13 1/2 [34.3]											22 7/8 [58.1]	4	8								
5	7 7/8 [20.0]	14 3/4 [37.5]											25 3/8 [64.5]	5	10								
6	9 1/8 [23.2]	15 7/8 [40.3]											27 5/8 [70.2]	39 3/8 [100.0]	6	12							
7	10 1/4 [26.0]	17 1/2 [44.5]											30 7/8 [78.4]	44 1/4 [112.4]	57 5/8 [146.4]	71 [180.3]	6	12					
8	11 7/8 [30.2]	18 1/4 [46.4]											32 3/8 [82.2]	46 1/2 [118.1]	60 5/8 [154.0]	74 3/4 [189.9]	***	***	***	***	***	7	14
9	12 5/8 [32.1]	20 5/8 [52.4]											36 [91.5]	51 1/8 [129.9]	62 7/8 [159.7]	84 3/8 [214.3]	***	***	***	***	***	7	14

# PENBERTHY dimensions

Section 2000  
Dimensions 2721.2  
Issued 04/09  
Replaces 08/07

For: **MODEL TM GAGE – Side Connected**



Unit Designation is assigned as follows:

Example: 3TM6 Gage

The first number equals the number of gage sections (3);

The next two letters indicate gage model (TM – Transparent Medium Pressure)

The last number denotes the glass size (6).

Glass Size	Minimum and Maximum Dimension "D" in Inches [cm] for 1/2" NPT/Socketweld Connections Centers Available in 1/8" [0.3cm] Increments Between Minimum and Maximum Standard Side Connection is to the Right of the Gage Vision										
	Number of Sections										
	1	2	3	4	5	6	7	8	9	10	
1	Min	4 3/4 [12.1]									
	Max	7 5/8 [19.4]									
2	Min	5 3/4 [14.6]									
	Max	8 5/8 [21.9]									
3	Min	6 3/4 [17.1]									
	Max	9 5/8 [24.4]									
NOTE: For minimum 3/4" NPT/socketweld connections - Add 1/2" [1.3 cm] to dimension "D" shown below For maximum 3/4" NPT/socketweld connections - Subtract 3/4" [1.9 cm] from dimension "D" shown below											
CONSULT FACTORY FOR MINIMUM FRONT OR BACK CONNECTIONS											
4	Min	7 3/4 [19.7]	16 [40.6]								
	Max	10 3/4 [27.3]	20 1/8 [51.1]								
5	Min	8 7/8 [22.5]	18 1/4 [46.4]								
	Max	12 [30.5]	22 5/8 [57.5]								
6	Min	10 1/8 [25.7]	20 3/4 [52.7]	31 3/8 [79.7]							
	Max	13 1/8 [33.3]	24 7/8 [63.2]	36 5/8 [93.0]							
7	Min	11 1/4 [28.6]	23 [58.4]	34 3/4 [88.3]	46 1/2 [118.1]	58 1/4 [148.0]					
	Max	14 3/4 [37.5]	28 1/8 [71.4]	41 1/4 [104.8]	54 7/8 [139.4]	68 1/4 [173.4]					
8	Min	12 7/8 [32.7]	26 1/4 [66.7]	39 5/8 [100.6]	53 [134.6]	66 3/8 [168.6]	79 3/4 [202.6]	93 1/8 [236.5]	106 1/2 [270.5]	119 7/8 [304.5]	133 1/4 [338.5]
	Max	15 1/2 [39.4]	29 5/8 [75.2]	43 3/4 [111.1]	57 7/8 [147.0]	72 [182.9]	84 1/8 [213.7]	98 1/4 [249.6]	112 3/8 [285.4]	126 1/2 [321.3]	140 5/8 [357.2]
9	Min	13 5/8 [34.6]	27 3/4 [70.5]	41 7/8 [106.4]	56 [142.2]	70 1/8 [178.1]	84 1/4 [214.0]	98 3/8 [249.9]	112 1/2 [285.8]	126 5/8 [321.6]	140 3/4 [357.5]
	Max	17 7/8 [45.4]	33 1/4 [84.5]	48 3/8 [122.9]	60 1/8 [152.7]	81 5/8 [207.3]	93 [236.2]	106 3/8 [270.2]	119 3/4 [304.2]	133 1/8 [338.1]	146 1/2 [372.1]

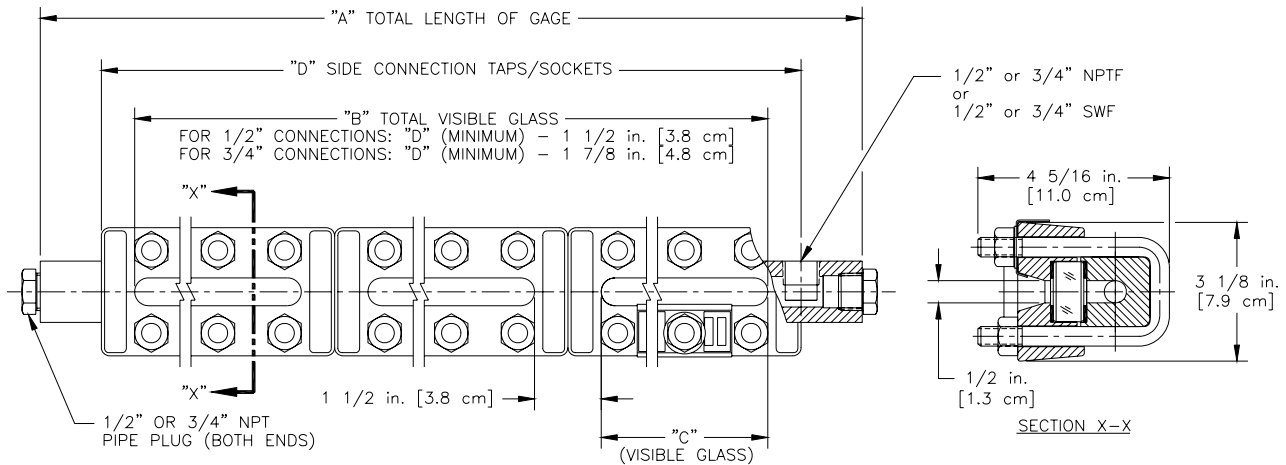
Glass Size	Dim. "C" in inches [cm]	Dimension "A" in Inches [cm] 1/2" and 3/4" NPT/socketweld Connections										Quantity Per Section	
		Number of Sections										Bolt	Nut
		1	2	3	4	5	6	7	8	9	10		
1	3 3/4 [9.5]	10 3/8 [26.4]										6	6
2	4 3/4 [12.1]	11 3/8 [28.9]										6	6
3	5 3/4 [14.6]	12 3/8 [31.4]										8	8
4	6 3/4 [17.1]	13 1/2 [34.3]	22 7/8 [58.1]									8	8
5	7 7/8 [20.0]	14 3/4 [37.5]	25 3/8 [64.5]								10	10	
6	9 1/8 [23.2]	15 7/8 [40.3]	27 5/8 [70.2]	39 3/8 [100.0]						12	12		
7	10 1/4 [26.0]	17 1/2 [44.5]	30 7/8 [78.4]	44 1/4 [112.4]	57 5/8 [146.4]	71 [180.3]					12	12	
8	11 7/8 [30.2]	18 1/4 [46.4]	32 3/8 [82.2]	46 1/2 [118.1]	60 5/8 [154.0]	74 3/4 [189.9]	***	***	***	***	***	14	14
9	12 5/8 [32.1]	20 5/8 [52.4]	36 [91.5]	51 1/8 [129.9]	62 7/8 [159.7]	84 3/8 [214.3]	***	***	***	***	***	14	14

# PENBERTHY

## dimensions

Section 2000  
 Dimensions 2721.3  
 Issued 04/09  
 Replaces 08/07

For: **MODEL RMR GAGE – Side Connected**



Unit Designation is assigned as follows:

Example: 3RMR6 Gage

The first number equals the number of gage sections (3);

The next three letters indicate gage model (RMR – Reflex Medium Pressure Recessed)

The last number denotes the glass size (6).

Glass Size		Minimum and Maximum Dimension "D" in Inches [cm] for 1/2" NPT/Socketweld Connections									
		Centers Available in 1/8" [0.3cm] Increments Between Minimum and Maximum									
		Standard Side Connection is to the Right of the Gage Vision									
		Number of Sections									
		1	2	3	4	5	6	7	8	9	10
1	Min	5 1/4 [13.3]									
	Max	7 5/8 [19.4]									
2	Min	6 1/4 [15.9]									
	Max	8 5/8 [21.9]									
3	Min	7 1/4 [18.4]									
	Max	9 5/8 [24.4]									
4	Min	8 1/4 [21.0]	16 1/2 [41.9]								
	Max	10 3/4 [27.3]	20 1/8 [51.1]								
5	Min	9 3/8 [23.8]	18 3/4 [47.6]								
	Max	12 [30.5]	22 5/8 [57.5]								
6	Min	10 5/8 [27.0]	21 1/4 [54.0]	31 7/8 [81.0]							
	Max	13 1/8 [33.3]	24 7/8 [63.2]	36 5/8 [93.0]							
7	Min	11 3/4 [29.8]	23 1/2 [59.7]	35 1/4 [89.5]	47 [119.4]	58 3/4 [149.2]					
	Max	14 3/4 [37.5]	28 1/8 [71.4]	41 1/4 [104.8]	54 7/8 [139.4]	68 1/4 [173.4]					
8	Min	13 3/8 [34.0]	26 3/4 [67.9]	40 1/8 [101.9]	53 1/2 [135.9]	66 7/8 [169.9]	80 1/4 [203.8]	93 5/8 [237.8]	107 [271.8]	120 3/8 [305.7]	133 3/4 [339.7]
	Max	15 1/2 [39.4]	29 5/8 [75.2]	43 3/4 [111.1]	57 7/8 [147.0]	72 [182.9]	84 5/8 [214.9]	98 3/4 [250.8]	112 7/8 [286.7]	127 [322.6]	141 1/8 [358.5]
9	Min	14 1/8 [35.9]	28 1/4 [71.8]	42 3/8 [107.6]	56 1/2 [143.5]	70 5/8 [179.4]	84 3/4 [215.3]	98 7/8 [251.1]	113 [287.0]	127 1/8 [322.9]	141 1/4 [358.8]
	Max	17 7/8 [45.4]	33 1/4 [84.5]	48 3/8 [122.9]	60 1/8 [152.7]	81 5/8 [207.3]	93 1/2 [237.5]	106 7/8 [271.5]	120 1/4 [305.4]	133 5/8 [339.4]	147 [373.4]

NOTE:  
 For minimum 3/4" NPT/socketweld connections - Add 1/4" [0.6 cm] to dimension "D" shown below  
 For maximum 3/4" NPT/socketweld connections - Subtract 3/4" [1.9 cm] from dimension "D" shown below

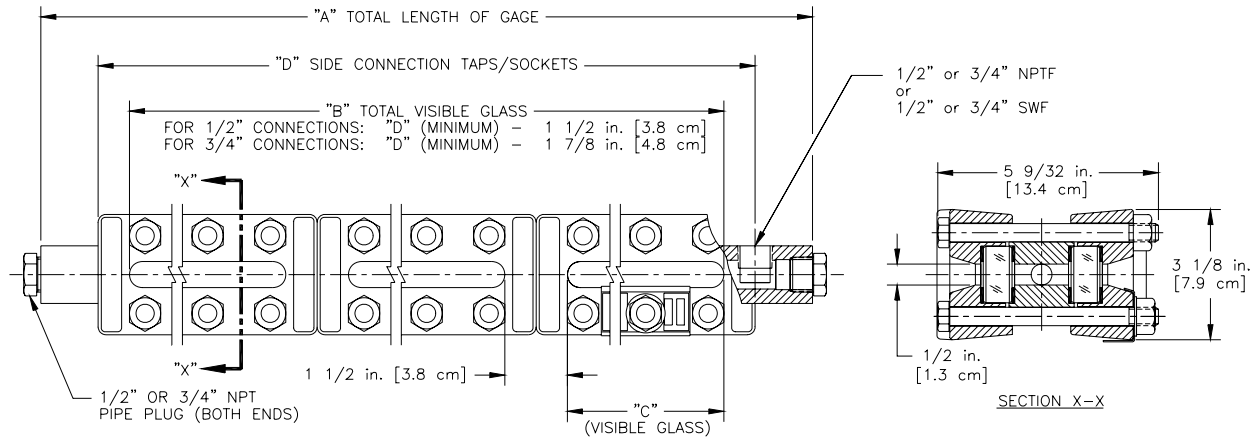
CONSULT FACTORY FOR MINIMUM FRONT OR BACK CONNECTIONS

Glass Size	Dim. "C" in inches [cm]	Dimension "A" in Inches [cm] 1/2" and 3/4" NPT/Socketweld Connections										Quantity Per Section			
		Number of Sections										Bolt	Nut		
		1	2	3	4	5	6	7	8	9	10				
1	3 3/4 [9.5]													3	6
2	4 3/4 [12.1]													3	6
3	5 3/4 [14.6]													4	8
4	6 3/4 [17.1]													4	8
5	7 7/8 [20.0]													5	10
6	9 1/8 [23.2]													6	12
7	10 1/4 [26.0]													6	12
8	11 7/8 [30.2]													7	14
9	12 5/8 [32.1]													7	14

# PENBERTHY dimensions

Section 2000  
Dimensions 2721.4  
Issued 04/09  
Replaces 08/07

For: **MODEL TMR GAGE – Side Connected**



Unit Designation is assigned as follows:

Example: 3TMR6 Gage

The first number equals the number of gage sections (3);

The next three letters indicate gage model (TMR – Transparent Medium Pressure Recessed)

The last number denotes the glass size (6).

Glass Size	Minimum and Maximum Dimension "D" in Inches [cm] for 1/2" NPT/Socketweld Connections										
	Centers Available in 1/8" [0.3cm] Increments Between Minimum and Maximum										
	Standard Side Connection is to the Right of the Gage Vision										
		Number of Sections									
		1	2	3	4	5	6	7	8	9	10
1	Min	5 1/4 [13.3]									
	Max	7 5/8 [19.4]									
2	Min	6 1/4 [15.9]									
	Max	8 5/8 [21.9]									
3	Min	7 1/4 [18.4]									
	Max	9 5/8 [24.4]									
4	Min	8 1/4 [21.0]	16 1/2 [41.9]								
	Max	10 3/4 [27.3]	20 1/8 [51.1]								
5	Min	9 3/8 [23.8]	18 3/4 [47.6]								
	Max	12 [30.5]	22 5/8 [57.5]								
6	Min	10 5/8 [27.0]	21 1/4 [54.0]	31 7/8 [81.0]							
	Max	13 1/8 [33.3]	24 7/8 [63.2]	36 5/8 [93.0]							
7	Min	11 3/4 [29.8]	23 1/2 [59.7]	35 1/4 [89.5]	47 [119.4]	58 3/4 [149.2]					
	Max	14 3/4 [37.5]	28 1/8 [71.4]	41 1/4 [104.8]	54 7/8 [139.4]	68 1/4 [173.4]					
8	Min	13 3/8 [34.0]	26 3/4 [67.9]	40 1/8 [101.9]	53 1/2 [135.9]	66 7/8 [169.9]	80 1/4 [203.8]	93 5/8 [237.8]	107 [271.8]	120 3/8 [305.7]	133 3/4 [339.7]
	Max	15 1/2 [39.4]	29 5/8 [75.2]	43 3/4 [111.1]	57 7/8 [147.0]	72 [182.9]	84 5/8 [214.9]	98 3/4 [250.8]	112 7/8 [286.7]	127 [322.6]	141 1/8 [358.5]
9	Min	14 1/8 [35.9]	28 1/4 [71.8]	42 3/8 [107.6]	56 1/2 [143.5]	70 5/8 [179.4]	84 3/4 [215.3]	98 7/8 [251.1]	113 [287.0]	127 1/8 [322.9]	141 1/4 [358.8]
	Max	17 7/8 [45.4]	33 1/4 [84.5]	48 3/8 [122.9]	60 1/8 [152.7]	81 5/8 [207.3]	93 1/2 [237.5]	106 7/8 [271.5]	120 1/4 [305.4]	133 5/8 [339.4]	147 [373.4]

NOTE:  
For minimum 3/4" NPT/socketweld connections - Add 1/4" [0.6 cm] to dimension "D" shown below  
For maximum 3/4" NPT/socketweld connections - Subtract 3/4" [1.9 cm] from dimension "D" shown below

CONSULT FACTORY FOR MINIMUM FRONT OR BACK CONNECTIONS

Glass Size	Dim. "C" in inches [cm]	Dimension "A" in Inches [cm] 1/2" and 3/4" NPT/socketweld Connections										Quantity Per Section			
		Number of Sections										Bolt	Nut		
		1	2	3	4	5	6	7	8	9	10				
1	3 3/4 [9.5]													6	6
2	4 3/4 [12.1]													6	6
3	5 3/4 [14.6]													8	8
4	6 3/4 [17.1]													8	8
5	7 7/8 [20.0]													10	10
6	9 1/8 [23.2]													12	12
7	10 1/4 [26.0]													12	12
8	11 7/8 [30.2]													14	14
9	12 5/8 [32.1]													14	14

NOTE:  
\*\*\* For 1/2" NPT or socketweld connections: Dimension "D" + 2 3/4" [7.0 cm]  
\*\*\* For 3/4" NPT or socketweld connections: Dimension "D" + 3 1/2" [8.9 cm]