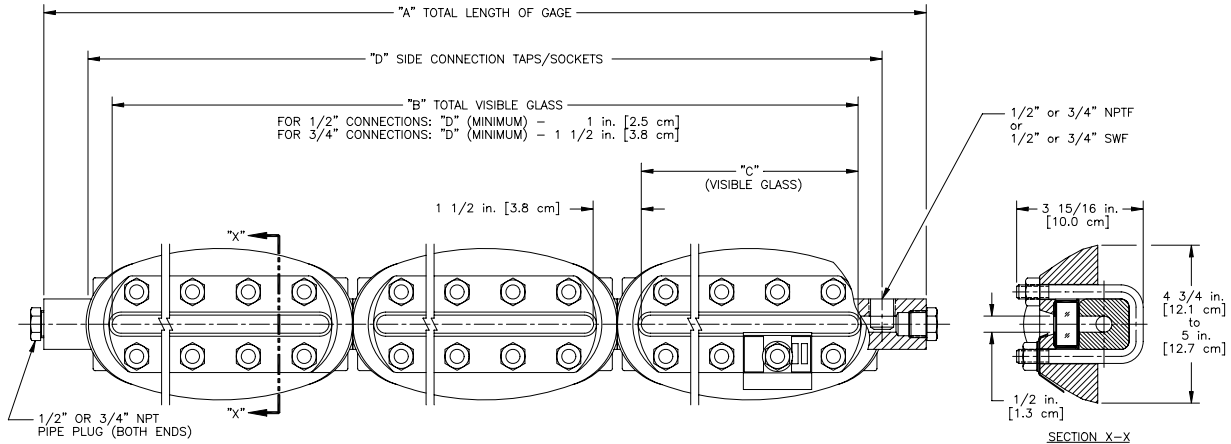


# PENBERTHY dimensions

Section 2000  
Dimensions 2722.1  
Issued 04/09  
Replaces 08/07

For: **MODEL RH GAGE – Side Connected**



Unit Designation is assigned as follows:

Example: 3RH 6H Gage

The first number equals the number of gage sections (3);

The next two letters indicate gage model (RH – Reflex High Pressure);

The last number denotes the glass size (6);

The last letter identifies the current design

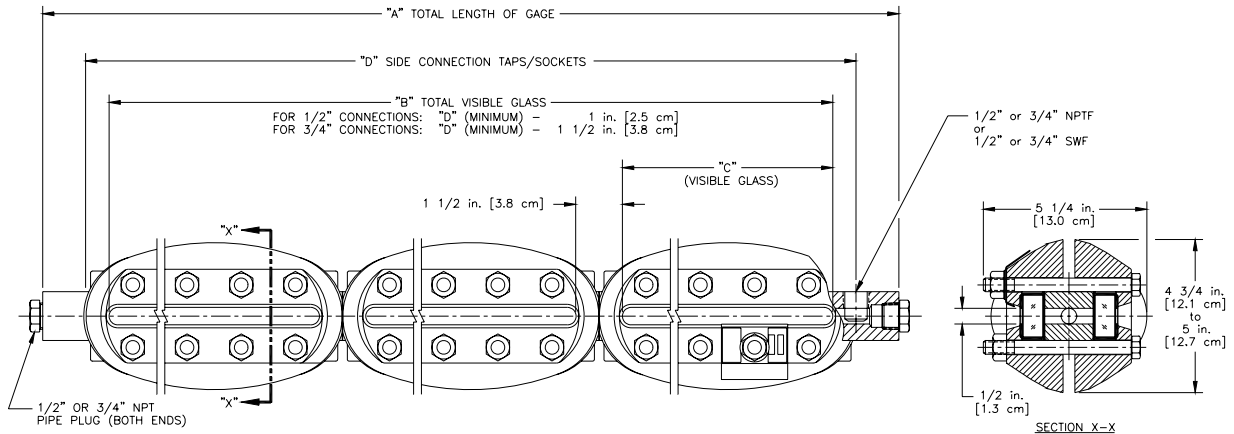
Glass Size	Minimum and Maximum Dimension "D" in Inches [cm] for 1/2" NPT/Socketweld Connections											
	Centers Available in 1/8" [0.3 cm] Increments Between Minimum and Maximum											
	Standard Side Connection is to the Right of the Gage Vision											
Number of Sections												
	1	2	3	4	5	6	7	8	9	10		
4	Min 7 3/4 [19.7] Max 10 3/4 [27.3]	16 [40.6] 20 1/8 [51.1]	NOTE: For minimum 3/4" NPT/socketweld connections - Add 1/2" [1.3 cm] to dimension "D" shown below For maximum 3/4" NPT/socketweld connections - Subtract 3/4" [1.9 cm] from dimension "D" shown below								CONSULT FACTORY FOR MINIMUM FRONT OR BACK CONNECTIONS	
5	Min 8 7/8 [22.5] Max 12 [30.5]	18 1/4 [46.4] 22 5/8 [57.5]										
6	Min 10 1/8 [25.7] Max 13 1/8 [33.3]	20 3/4 [52.7] 24 7/8 [63.2]	31 3/8 [79.7] 36 5/8 [93.0]									
7	Min 11 1/4 [28.6] Max 14 3/4 [37.5]	23 [58.4] 28 1/8 [71.4]	34 3/4 [88.3] 41 1/4 [104.8]	46 1/2 [118.1] 54 7/8 [139.4]	58 1/4 [148.0] 68 1/4 [173.4]							
8	Min 12 7/8 [32.7] Max 15 1/2 [39.4]	26 1/4 [66.7] 29 5/8 [75.2]	39 5/8 [100.6] 43 3/4 [111.1]	53 [134.6] 57 7/8 [147.0]	66 3/8 [168.6] 72 [182.9]	79 3/4 [202.6] 84 1/8 [213.7]	93 1/8 [236.5] 98 1/4 [249.6]	106 1/2 [270.5] 112 3/8 [285.4]	119 7/8 [304.5] 126 1/2 [321.3]	133 1/4 [338.5] 140 5/8 [357.2]		
9	Min 13 5/8 [34.6] Max 17 7/8 [45.4]	27 3/4 [70.5] 33 1/4 [84.5]	41 7/8 [106.4] 48 3/8 [122.9]	56 [142.2] 60 1/8 [152.7]	70 1/8 [178.1] 81 5/8 [207.3]	84 1/4 [214.0] 93 [236.2]	98 3/8 [249.9] 106 3/8 [270.2]	112 1/2 [285.8] 119 3/4 [304.2]	126 5/8 [321.6] 133 1/8 [338.1]	140 3/4 [357.5] 146 1/2 [372.1]		

Glass Size	Dim. "C" in inches [cm]	Dimension "A" in Inches [cm] 1/2" and 3/4" NPT/socketweld Connections										Quantity Per Section	
		Number of Sections										Bolt	Nut
		1	2	3	4	5	6	7	8	9	10		
4	6 3/4 [17.1]	13 1/2 [34.3]	22 7/8 [58.1]	*** For 1/2" NPT or socketweld connections: Dimension "D" + 2 3/4" [7.0 cm]							4	8	
5	7 7/8 [20.0]	14 3/4 [37.5]	25 3/8 [64.5]	*** For 3/4" NPT or socketweld connections: Dimension "D" + 3 1/2" [8.9 cm]							5	10	
6	9 1/8 [23.2]	15 7/8 [40.3]	27 5/8 [70.2]	39 3/8 [100.0]							6	12	
7	10 1/4 [26.0]	17 1/2 [44.5]	30 7/8 [78.4]	44 1/4 [112.4]	57 5/8 [146.4]	71 [180.3]					6	12	
8	11 7/8 [30.2]	18 1/4 [46.4]	32 3/8 [82.2]	46 1/2 [118.1]	60 5/8 [154.0]	74 3/4 [189.9]	***	***	***	***	***	7	14
9	12 5/8 [32.1]	20 5/8 [52.4]	36 [91.5]	51 1/8 [129.9]	62 7/8 [159.7]	84 3/8 [214.3]	***	***	***	***	***	7	14

# PENBERTHY dimensions

Section 2000  
Dimensions 2722.2  
Issued 04/09  
Replaces 08/07

For: **MODEL TH GAGE – Side Connected**



Unit Designation is assigned as follows:

Example: 3TH 6H Gage

The first number equals the number of gage sections (3);

The next two letters indicate gage model (TH – Transparent High Pressure);

The last number denotes the glass size (6);

The last letter identifies the current design

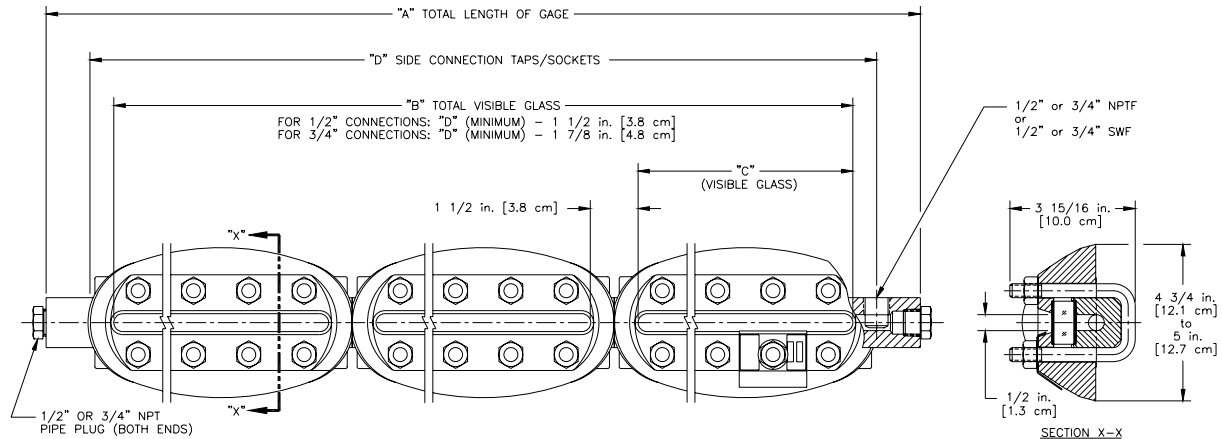
Glass Size	Minimum and Maximum Dimension "D" in Inches [cm] for 1/2" NPT/Socketweld Connections											
	Centers Available in 1/8" [0.3 cm] Increments Between Minimum and Maximum											
	Standard Side Connection is to the Right of the Gage Vision											
Number of Sections												
	1	2	3	4	5	6	7	8	9	10		
4	Min 7 3/4 [19.7] Max 10 3/4 [27.3]	16 [40.6] 20 1/8 [51.1]	NOTE: For minimum 3/4" NPT/socketweld connections - Add 1/2" [1.3 cm] to dimension "D" shown below For maximum 3/4" NPT/socketweld connections - Subtract 3/4" [1.9 cm] from dimension "D" shown below								CONSULT FACTORY FOR MINIMUM FRONT OR BACK CONNECTIONS	
5	Min 8 7/8 [22.5] Max 12 [30.5]	18 1/4 [46.4] 22 5/8 [57.5]										
6	Min 10 1/8 [25.7] Max 13 1/8 [33.3]	20 3/4 [52.7] 24 7/8 [63.2]	31 3/8 [79.7] 36 5/8 [93.0]									
7	Min 11 1/4 [28.6] Max 14 3/4 [37.5]	23 [58.4] 28 1/8 [71.4]	34 3/4 [88.3] 41 1/4 [104.8]	46 1/2 [118.1] 54 7/8 [139.4]	58 1/4 [148.0] 68 1/4 [173.4]							
8	Min 12 7/8 [32.7] Max 15 1/2 [39.4]	26 1/4 [66.7] 29 5/8 [75.2]	39 5/8 [100.6] 43 3/4 [111.1]	53 [134.6] 57 7/8 [147.0]	66 3/8 [168.6] 72 [182.9]	79 3/4 [202.6] 84 1/8 [213.7]	93 1/8 [236.5] 98 1/4 [249.6]	106 1/2 [270.5] 112 3/8 [285.4]	119 7/8 [304.5] 126 1/2 [321.3]	133 1/4 [338.5] 140 5/8 [357.2]		
9	Min 13 5/8 [34.6] Max 17 7/8 [45.4]	27 3/4 [70.5] 33 1/4 [84.5]	41 7/8 [106.4] 48 3/8 [122.9]	56 [142.2] 60 1/8 [152.7]	70 1/8 [178.1] 81 5/8 [207.3]	84 1/4 [214.0] 93 [236.2]	98 3/8 [249.9] 106 3/8 [270.2]	112 1/2 [285.8] 119 3/4 [304.2]	126 5/8 [321.6] 133 1/8 [338.1]	140 3/4 [357.5] 146 1/2 [372.1]		

Glass Size	Dim. "C" in inches [cm]	Dimension "A" in Inches [cm] 1/2" and 3/4" NPT/socketweld Connections										Quantity Per Section	
		Number of Sections										Bolt	Nut
		1	2	3	4	5	6	7	8	9	10		
4	6 3/4 [17.1]	13 1/2 [34.3]	22 7/8 [58.1]	*** For 1/2" NPT or socketweld connections: Dimension "D" + 2 3/4" [7.0 cm]							8	8	
5	7 7/8 [20.0]	14 3/4 [37.5]	25 3/8 [64.5]	*** For 3/4" NPT or socketweld connections: Dimension "D" + 3 1/2" [8.9 cm]							10	10	
6	9 1/8 [23.2]	15 7/8 [40.3]	27 5/8 [70.2]	39 3/8 [100.0]							12	12	
7	10 1/4 [26.0]	17 1/2 [44.5]	30 7/8 [78.4]	44 1/4 [112.4]	57 5/8 [146.4]	71 [180.3]					12	12	
8	11 7/8 [30.2]	18 1/4 [46.4]	32 3/8 [82.2]	46 1/2 [118.1]	60 5/8 [154.0]	74 3/4 [189.9]	***	***	***	***	***	14	14
9	12 5/8 [32.1]	20 5/8 [52.4]	36 [91.5]	51 1/8 [129.9]	62 7/8 [159.7]	84 3/8 [214.3]	***	***	***	***	***	14	14

# PENBERTHY dimensions

Section 2000  
Dimensions 2722.3  
Issued 04/09  
Replaces 08/07

For: **MODEL RHR GAGE – Side Connected**



Unit Designation is assigned as follows:

Example: 3RHR6H Gage

The first number equals the number of gage sections (3);

The next three letters indicate gage model (RHR – Reflex High Pressure Recessed);

The last number denotes the glass size (6);

The last letter identifies the current design

Glass Size	Minimum and Maximum Dimension "D" in Inches [cm] for 1/2" NPT/Socketweld Connections Centers Available in 1/8" [0.3cm] Increments Between Minimum and Maximum											
	Standard Side Connection is to the Right of the Gage Vision											
	Number of Sections											
	1	2	3	4	5	6	7	8	9	10		
4	Min	8 1/4 [21.0]	16 1/2 [41.9]	NOTE:								
	Max	10 3/4 [27.3]	20 1/8 [51.1]	For minimum 3/4" NPT/socketweld connections - Add 1/4" [0.6cm] to dimension "D" shown below								
5	Min	9 3/8 [23.8]	18 3/4 [47.6]	For maximum 3/4" NPT/socketweld connections - Subtract 3/4" [1.9 cm] from dimension "D" shown below								
	Max	12 [30.5]	22 5/8 [57.5]	CONSULT FACTORY FOR MINIMUM FRONT OR BACK CONNECTIONS								
6	Min	10 5/8 [27.0]	21 1/4 [54.0]	31 7/8 [81.0]								
	Max	13 1/8 [33.3]	24 7/8 [63.2]	36 5/8 [93.0]								
7	Min	11 3/4 [29.8]	23 1/2 [59.7]	35 1/4 [89.5]	47 [119.4]	58 3/4 [149.2]						
	Max	14 3/4 [37.5]	28 1/8 [71.4]	41 1/4 [104.8]	54 7/8 [139.4]	68 1/4 [173.4]						
8	Min	13 3/8 [34.0]	26 3/4 [67.9]	40 1/8 [101.9]	53 1/2 [135.9]	66 7/8 [169.9]	80 1/4 [203.8]	93 5/8 [237.8]	107 [271.8]	120 3/8 [305.7]	133 3/4 [339.7]	
	Max	15 1/2 [39.4]	29 5/8 [75.2]	43 3/4 [111.1]	57 7/8 [147.0]	72 [182.9]	84 5/8 [214.9]	98 3/4 [250.8]	112 7/8 [286.7]	127 [322.6]	141 1/8 [358.5]	
9	Min	14 1/8 [35.9]	28 1/4 [71.8]	42 3/8 [107.6]	56 1/2 [143.5]	70 5/8 [179.4]	84 3/4 [215.3]	98 7/8 [251.1]	113 [287.0]	127 1/8 [322.9]	141 1/4 [358.8]	
	Max	17 7/8 [45.4]	33 1/4 [84.5]	48 3/8 [122.9]	60 1/8 [152.7]	71 5/8 [207.3]	83 1/2 [237.5]	106 7/8 [271.5]	120 1/4 [305.4]	133 5/8 [339.4]	147 [373.4]	

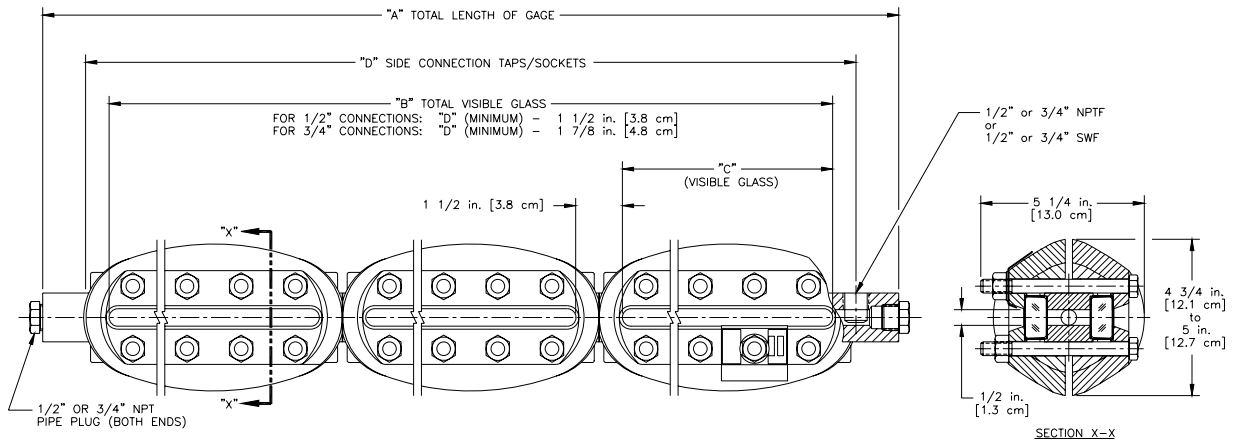
Glass Size	Dim. "C" in inches [cm]	Dimension "A" in Inches [cm] 1/2" and 3/4" NPT/socketweld Connections										Quantity Per Section	
		Number of Sections										Bolt	Nut
		1	2	3	4	5	6	7	8	9	10		
4	6 3/4 [17.1]											4	8
5	7 7/8 [20.0]											5	10
6	9 1/8 [23.2]											6	12
7	10 1/4 [26.0]											6	12
8	11 7/8 [30.2]											7	14
9	12 5/8 [32.1]											7	14

\*\*\* For 1/2" NPT or socketweld connections: Dimension "D" + 2 3/4" [7.0 cm]  
 \*\*\* For 3/4" NPT or socketweld connections: Dimension "D" + 3 1/2" [8.9 cm]

# PENBERTHY dimensions

Section 2000  
Dimensions 2722.4  
Issued 04/09  
Replaces 08/07

For: **MODEL THR GAGE – Side Connected**



Unit Designation is assigned as follows:

Example: 3THR6H Gage

The first number equals the number of gage sections (3);

The next three letters indicate gage model (THR – Transparent High Pressure Recessed);

The last number denotes the glass size (6);

The last letter identifies the current design

Glass Size	Minimum and Maximum Dimension "D" in Inches [cm] for 1/2" NPT/Socketweld Connections Centers Available in 1/8" [0.3cm] Increments Between Minimum and Maximum Standard Side Connection is to the Right of the Gage Vision												
	Number of Sections												
		1	2	3	4	5	6	7	8	9	10		
4	Min	8 1/4 [21.0]	16 1/2 [41.9]	NOTE: For minimum 3/4" NPT/socketweld connections - Add 1/4" [0.6cm] to dimension "D" shown below For maximum 3/4" NPT/socketweld connections - Subtract 3/4" [1.9 cm] from dimension "D" shown below							CONSULT FACTORY FOR MINIMUM FRONT OR BACK CONNECTIONS		
	Max	10 3/4 [27.3]	20 1/8 [51.1]										
5	Min	9 3/8 [23.8]	18 3/4 [47.6]	NOTE: For minimum 3/4" NPT/socketweld connections - Add 1/4" [0.6cm] to dimension "D" shown below For maximum 3/4" NPT/socketweld connections - Subtract 3/4" [1.9 cm] from dimension "D" shown below							CONSULT FACTORY FOR MINIMUM FRONT OR BACK CONNECTIONS		
	Max	12 [30.5]	22 5/8 [57.5]										
6	Min	10 5/8 [27.0]	21 1/4 [54.0]	31 7/8 [81.0]	NOTE: For minimum 3/4" NPT/socketweld connections - Add 1/4" [0.6cm] to dimension "D" shown below For maximum 3/4" NPT/socketweld connections - Subtract 3/4" [1.9 cm] from dimension "D" shown below							CONSULT FACTORY FOR MINIMUM FRONT OR BACK CONNECTIONS	
	Max	13 1/8 [33.3]	24 7/8 [63.2]	36 5/8 [93.0]									
7	Min	11 3/4 [29.8]	23 1/2 [59.7]	35 1/4 [89.5]	47 [119.4]	58 3/4 [149.2]	NOTE: For minimum 3/4" NPT/socketweld connections - Add 1/4" [0.6cm] to dimension "D" shown below For maximum 3/4" NPT/socketweld connections - Subtract 3/4" [1.9 cm] from dimension "D" shown below					CONSULT FACTORY FOR MINIMUM FRONT OR BACK CONNECTIONS	
	Max	14 3/4 [37.5]	28 1/8 [71.4]	41 1/4 [104.8]	54 7/8 [139.4]	68 1/4 [173.4]							
8	Min	13 3/8 [34.0]	26 3/4 [67.9]	40 1/8 [101.9]	53 1/2 [135.9]	66 7/8 [169.9]	80 1/4 [203.8]	93 5/8 [237.8]	107 [271.8]	120 3/8 [305.7]	133 3/4 [339.7]		
	Max	15 1/2 [39.4]	29 5/8 [75.2]	43 3/4 [111.1]	57 7/8 [147.0]	72 [182.9]	84 5/8 [214.9]	98 3/4 [250.8]	112 7/8 [286.7]	127 [322.6]	141 1/8 [358.5]		
9	Min	14 1/8 [35.9]	28 1/4 [71.8]	42 3/8 [107.6]	56 1/2 [143.5]	70 5/8 [179.4]	84 3/4 [215.3]	98 7/8 [251.1]	113 [287.0]	127 1/8 [322.9]	141 1/4 [358.8]		
	Max	17 7/8 [45.4]	33 1/4 [84.5]	48 3/8 [122.9]	60 1/8 [152.7]	74 5/8 [207.3]	89 1/2 [227.5]	103 7/8 [271.5]	118 1/4 [305.4]	133 5/8 [339.4]	147 [373.4]		

Glass Size	Dim. "C" in inches [cm]	Dimension "A" in Inches [cm] 1/2" and 3/4" NPT/socketweld Connections										Quantity Per Section	
		Number of Sections										Bolt	Nut
		1	2	3	4	5	6	7	8	9	10		
4	6 3/4 [17.1]											8	8
5	7 7/8 [20.0]											10	10
6	9 1/8 [23.2]											12	12
7	10 1/4 [26.0]											12	12
8	11 7/8 [30.2]											14	14
9	12 5/8 [32.1]											14	14

\*\*\* For 1/2" NPT or socketweld connections: Dimension "D" + 2 3/4" [7.0 cm]  
 \*\*\* For 3/4" NPT or socketweld connections: Dimension "D" + 3 1/2" [8.9 cm]