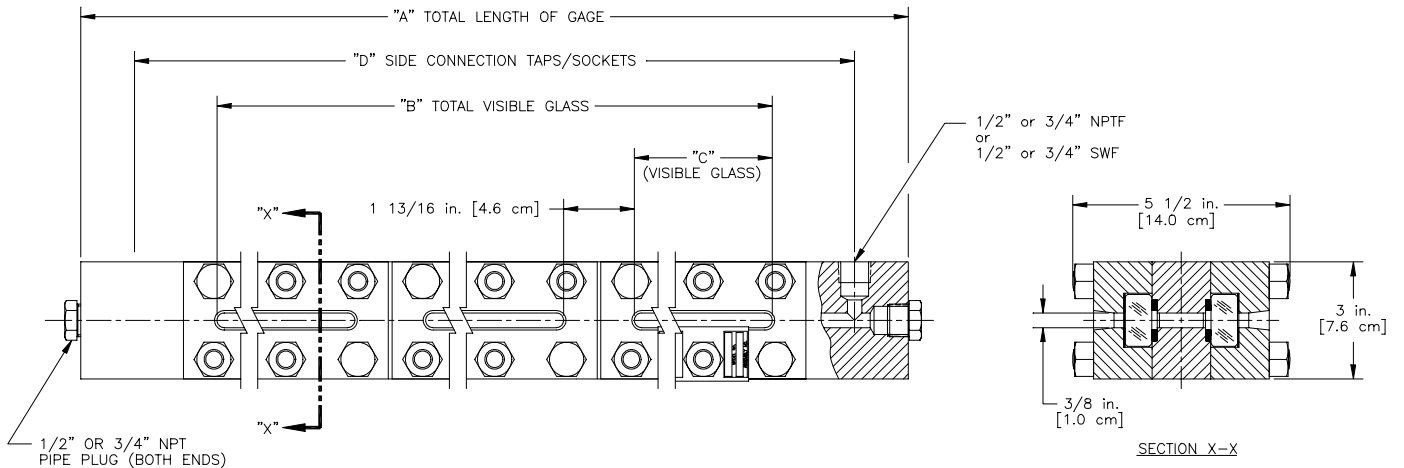


# PENBERTHY

## dimensions

Section 2000  
 Dimensions 2723  
 Issued 07/05  
 Replaces 04/87

For: **MODEL TU GAGE – SIDE CONNECTED**



Unit Designation is assigned as follows:

Example: 3TU 5 Gage

The first number equals the number of gage sections (3);

The next two letters indicate gage model (TU – Transparent Ultra High Pressure);

The last number denotes the glass size (6)

Glass Size	Minimum and Maximum Dimension "D" in Inches [cm] for 1/2" or 3/4" NPT/Socketweld Connections																		
	Centers Available in 1/8" [0.3 cm] Increments Between Minimum and Maximum																		
	Standard Side Connection is to the Right of the Gage Vision																		
		Number of Sections																	
		1	2	3	4	5	6	7	8	9	10								
1	Min	5 3/4 [14.6]	11 1/8 [28.3]	CONSULT FACTORY FOR MINIMUM FRONT OR BACK CONNECTIONS															
	Max	7 5/8 [19.4]	15 [38.1]																
3	Min	7 3/4 [19.7]	15 1/8 [38.4]									22 1/2 [57.2]							
	Max	8 5/8 [21.9]	17 [43.2]									25 3/8 [64.5]							
4	Min	8 3/4 [22.2]	17 1/8 [43.5]									25 1/2 [64.8]	33 7/8 [86.0]						
	Max	9 3/4 [24.8]	19 1/4 [48.9]									28 3/4 [73.0]	38 1/4 [97.2]						
5	Min	9 7/8 [25.1]	19 3/8 [49.2]									28 7/8 [73.3]	38 3/8 [97.5]	50 5/8 [128.6]	56 3/4 [144.1]	66 3/4 [169.5]	76 1/4 [193.7]	85 5/8 [217.5]	95 1/8 [241.6]
	Max	12 1/8 [30.8]	24 [51.0]									35 7/8 [91.1]	47 1/4 [120.0]	59 1/2 [151.1]	69 3/8 [176.2]	83 1/4 [211.5]	95 1/8 [241.6]	106 7/8 [271.5]	118 3/4 [301.6]
7	Min	12 1/4 [31.1]	24 1/8 [61.3]									36 [91.4]	47 3/8 [120.3]	59 5/8 [151.4]	69 1/2 [176.5]	83 3/8 [211.8]	95 1/4 [241.9]	107 [271.8]	118 7/8 [301.9]
	Max	15 [38.1]	25 3/8 [64.5]									38 1/4 [97.2]	59 1/2 [151.1]	69 3/8 [176.2]	83 1/4 [211.5]	95 1/8 [241.6]	106 7/8 [271.5]	118 3/4 [301.6]	128 1/2 [326.4]

Glass Size	Dim. "C" in inches [cm]	Dimension "A" in Inches [cm] for 1/2" and 3/4" NPT/socketweld Connections										Quantity Per Section					
		Number of Sections										Bolt	Nut	Stud			
		1	2	3	4	5	6	7	8	9	10						
1	3 17/32 [9.0]			For 1/2" NPT or socketweld connections: Dimension "D" + 2 3/4" [7.0 cm]										4	4	8	
3	5 17/32 [14.0]			For 3/4" NPT or socketweld connections: Dimension "D" + 3 1/2" [8.9 cm]										4	6	12	
4	6 17/32 [16.6]														4	6	12
5	7 21/32 [19.4]														4	8	16
7	10 1/32 [25.5]														4	10	20