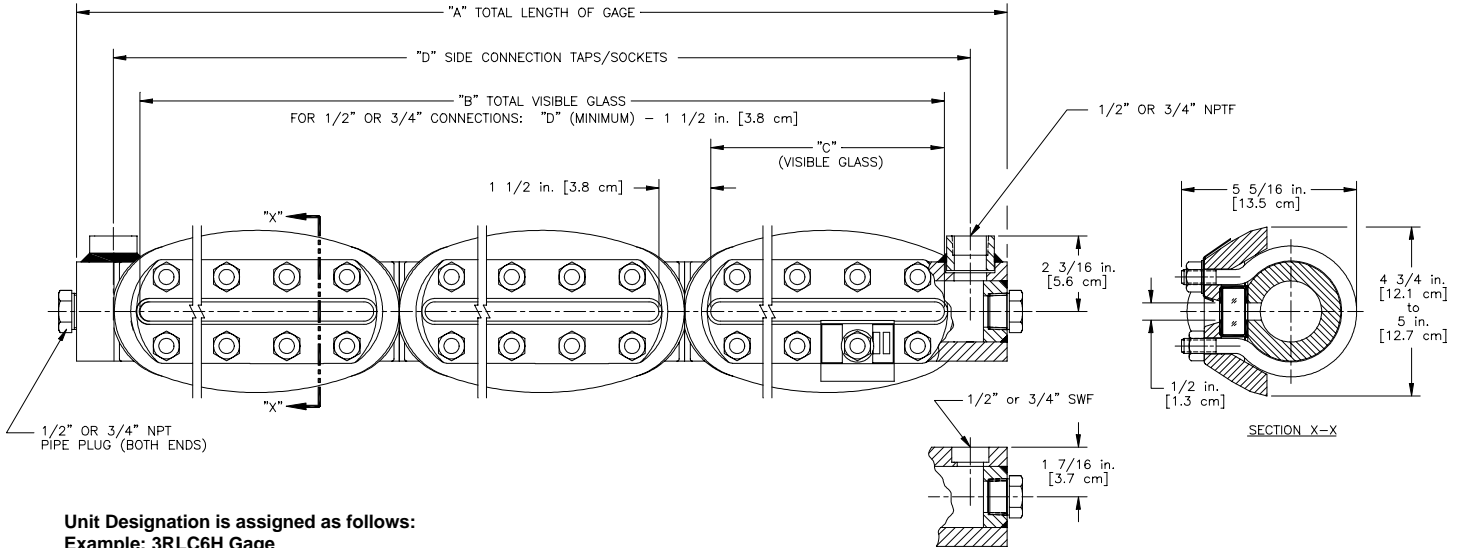


PENBERTHY dimensions

Section 2000
Dimensions 2724.1
Issued 07/05
Replaces 04/87

For: **MODEL RLC GAGE – Side Connected**



Unit Designation is assigned as follows:

Example: 3RLC6H Gage

The first number equals the number of gage sections (3);

The next three letters indicate gage model (RLC – Reflex Large Chamber);

The last number denotes the glass size (6);

The last letter identifies the current design.

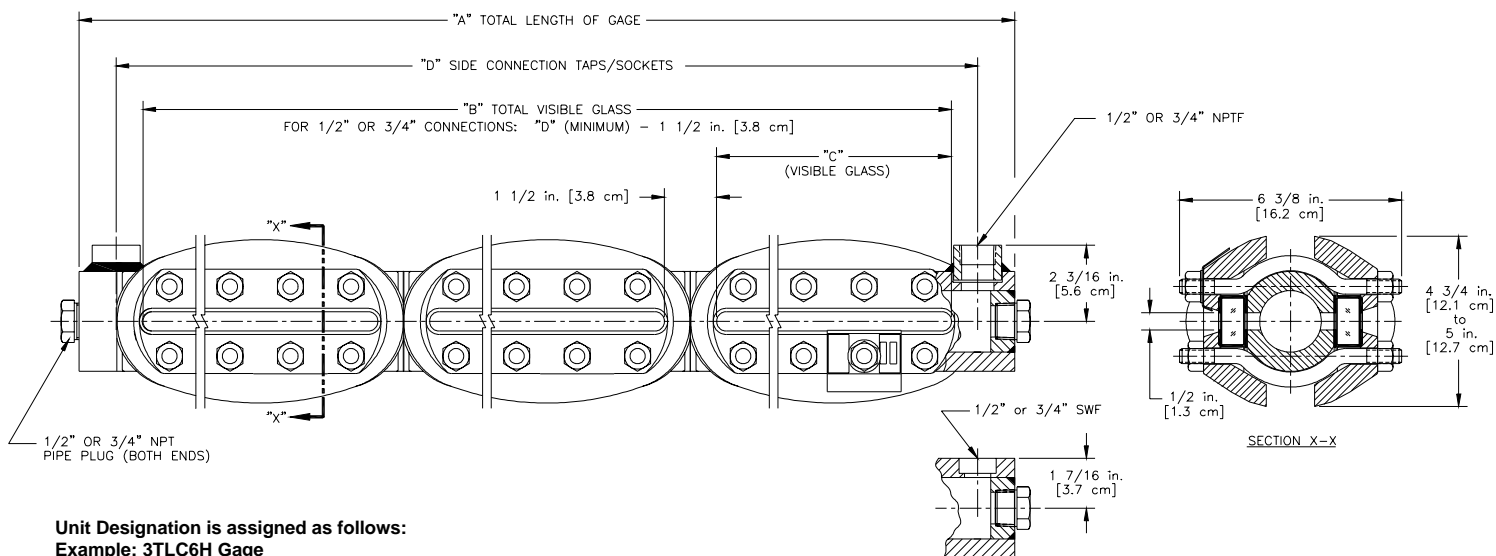
Glass Size	Minimum and Maximum Dimension "D" in Inches [cm] for 1/2" or 3/4" NPT/Socketweld Connections																	
	Centers Available in 1/8" [0.3 cm] Increments Between Minimum and Maximum																	
	Standard Side Connection is to the Right of the Gage Vision																	
Number of Sections																		
	1	2	3	4	5	6	7	8	9	10								
4	Min	8 1/4 [21.0]	16 1/2 [41.9]	CONSULT FACTORY FOR MINIMUM FRONT OR BACK CONNECTIONS														
	Max	9 1/4 [23.5]	18 5/8 [47.3]															
5	Min	9 3/8 [23.8]	18 3/4 [47.6]															
	Max	10 1/2 [26.7]	21 1/8 [53.7]															
6	Min	10 5/8 [27.0]	21 1/4 [54.0]								31 7/8 [81.0]							
	Max	11 5/8 [29.5]	23 3/8 [59.4]								35 1/8 [89.2]							
7	Min	11 3/4 [29.8]	23 1/2 [59.7]								35 1/4 [89.5]	47 [119.4]	58 3/4 [149.2]					
	Max	13 1/4 [33.7]	26 5/8 [67.6]								40 [101.6]	53 3/8 [135.6]	66 3/4 [169.5]					
8	Min	13 3/8 [34.0]	26 3/4 [67.9]								40 1/8 [101.9]	53 1/2 [135.9]	66 7/8 [169.9]	80 1/4 [203.8]	93 5/8 [237.8]	107 [271.8]	120 3/8 [305.8]	133 3/4 [339.7]
	Max	14 [35.6]	28 1/8 [71.4]								42 1/4 [107.3]	56 3/8 [143.2]	70 1/2 [179.1]	84 5/8 [214.9]	98 3/4 [250.8]	112 7/8 [286.7]	127 [322.6]	141 1/8 [358.5]
9	Min	14 1/8 [35.9]	28 1/4 [71.8]	42 3/8 [107.6]	56 1/2 [143.5]	70 5/8 [179.4]	84 3/4 [215.3]	98 7/8 [251.1]	113 [287.0]	127 1/8 [322.9]	141 1/4 [358.8]							
	Max	16 3/8 [41.6]	31 3/4 [80.6]	46 7/8 [119.1]	58 5/8 [148.9]	80 1/8 [203.5]	93 1/2 [237.5]	106 7/8 [271.5]	120 1/4 [305.4]	133 5/8 [339.4]	147 [373.4]							

Glass Size	Dim. "C" in inches [cm]	Dimension "A" in Inches [cm] 1/2" and 3/4" NPT/socketweld Connections										Quantity Per Section	
		Number of Sections										Bolt	Nut
		1	2	3	4	5	6	7	8	9	10		
4	6 3/4 [17.1]				For 1/2" NPT or socketweld connections: Dimension "D" + 1 7/8" [4.8 cm]							4	8
5	7 7/8 [20.0]				For 3/4" NPT or socketweld connections: Dimension "D" + 2 1/8" [5.4 cm]							5	10
6	9 1/8 [23.2]											6	12
7	10 1/4 [26.0]											6	12
8	11 7/8 [30.2]											7	14
9	12 5/8 [32.1]											7	14

PENBERTHY dimensions

Section 2000
Dimensions 2724.2
Issued 07/05
Replaces 04/87

For: **MODEL TLC GAGE – Side Connected**



Unit Designation is assigned as follows:

Example: 3TLC6H Gage

The first number equals the number of gage sections (3);

The next three letters indicate gage model (TLC – Transparent Large Chamber);

The last number denotes the glass size (6);

The last letter identifies the current design.

Glass Size	Minimum and Maximum Dimension "D" in Inches [cm] for 1/2" or 3/4" NPT/Socketweld Connections																			
	Centers Available in 1/8" [0.3 cm] Increments Between Minimum and Maximum																			
	Standard Side Connection is to the Right of the Gage Vision																			
	Number of Sections																			
	1	2	3	4	5	6	7	8	9	10										
4	Min	8 1/4 [21.0]	16 1/2 [41.9]	CONSULT FACTORY FOR MINIMUM FRONT OR BACK CONNECTIONS																
	Max	9 1/4 [23.5]	18 5/8 [47.3]																	
5	Min	9 3/8 [23.8]	18 3/4 [47.6]																	
	Max	10 1/2 [26.7]	21 1/8 [53.7]																	
6	Min	10 5/8 [27.0]	21 1/4 [54.0]										31 7/8 [81.0]							
	Max	11 5/8 [29.5]	23 3/8 [59.4]										35 1/8 [89.2]							
7	Min	11 3/4 [29.8]	23 1/2 [59.7]										35 1/4 [89.5]	47 [119.4]	58 3/4 [149.2]					
	Max	13 1/4 [33.7]	26 5/8 [67.6]										40 [101.6]	53 3/8 [135.6]	66 3/4 [169.5]					
8	Min	13 3/8 [34.0]	26 3/4 [67.9]										40 1/8 [101.9]	53 1/2 [135.9]	66 7/8 [169.9]	80 1/4 [203.8]	93 5/8 [237.8]	107 [271.8]	120 3/8 [305.8]	133 3/4 [339.7]
	Max	14 [35.6]	28 1/8 [71.4]										42 1/4 [107.3]	56 3/8 [143.2]	70 1/2 [179.1]	84 5/8 [214.9]	98 3/4 [250.8]	112 7/8 [286.7]	127 [322.6]	141 1/8 [358.5]
9	Min	14 1/8 [35.9]	28 1/4 [71.8]	42 3/8 [107.6]	56 1/2 [143.5]	70 5/8 [179.4]	84 3/4 [215.3]	98 7/8 [251.1]	113 [287.0]	127 1/8 [322.9]	141 1/4 [358.8]									
	Max	16 3/8 [41.6]	31 3/4 [80.6]	46 7/8 [119.1]	58 5/8 [148.9]	80 1/8 [203.5]	93 1/2 [237.5]	106 7/8 [271.5]	120 1/4 [305.4]	133 5/8 [339.4]	147 [373.4]									

Glass Size	Dim. "C" in inches [cm]	Dimension "A" in Inches [cm] 1/2" and 3/4" NPT/socketweld Connections										Quantity Per Section	
		Number of Sections										Bolt	Nut
		1	2	3	4	5	6	7	8	9	10		
4	6 3/4 [17.1]	For 1/2" NPT or socketweld connections: Dimension "D" + 1 7/8" [4.8 cm]										8	16
5	7 7/8 [20.0]	For 3/4" NPT or socketweld connections: Dimension "D" + 2 1/8" [5.4 cm]										10	20
6	9 1/8 [23.2]											12	24
7	10 1/4 [26.0]											12	24
8	11 7/8 [30.2]											14	28
9	12 5/8 [32.1]											14	28