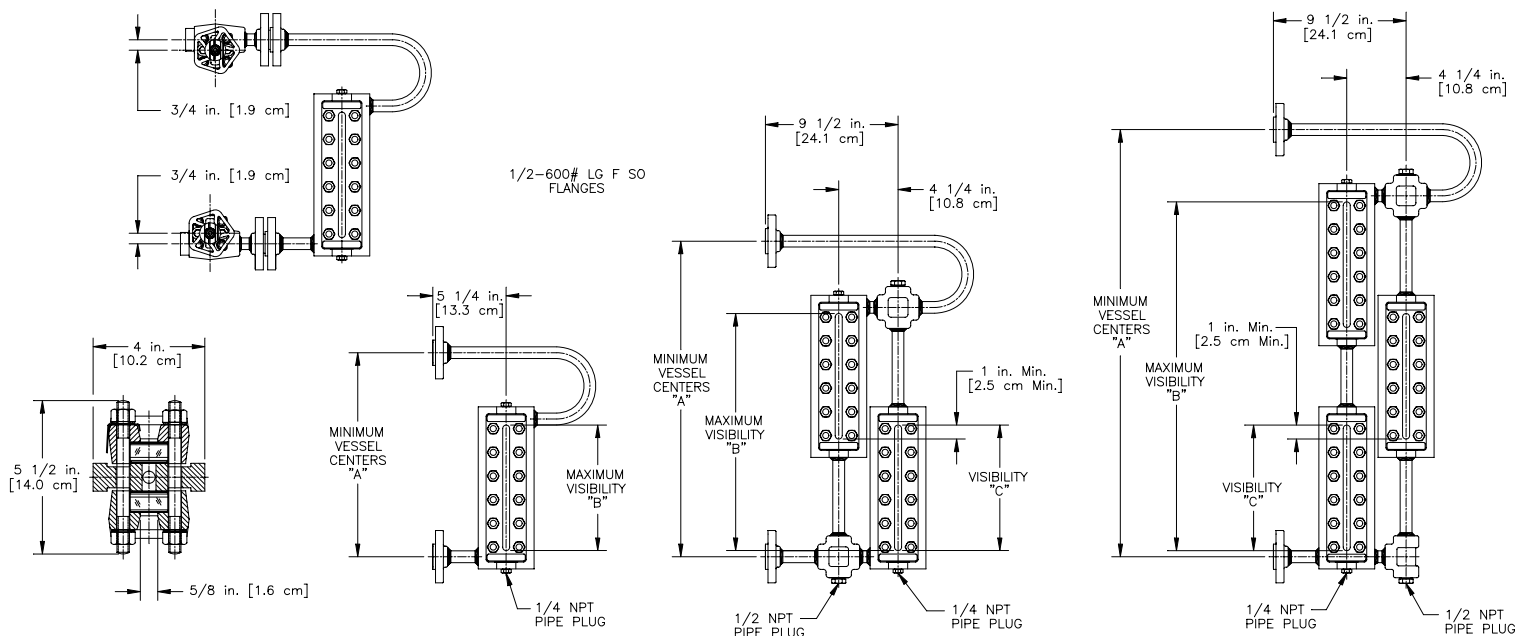


PENBERTHY dimensions

Section 2000
Dimensions 2726.1
Issued 07/08
Replaces 07/05

For: MODEL TSL-F GAGE

1/2 - 600# LG F SO FLANGES



Minimum vessel centers Dimension "A" can be reduced by 1 1/2" [3.8 cm] by using offset pattern gagecocks turned to the inside.

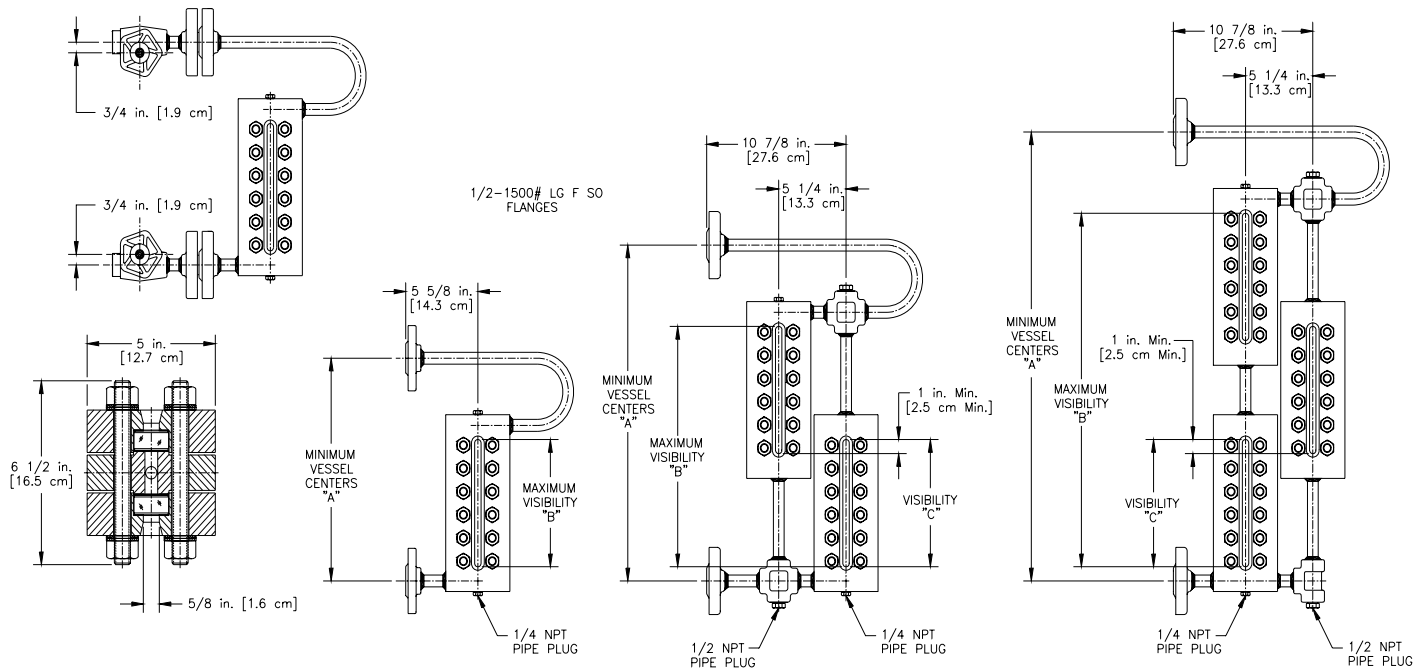
Number of Sections	Glass Size	Dim "A" inches [cm] without gagecocks	Dim "B" inches [cm]	Dim "C" inches [cm]	Quantity per section		Minimum Vessel Centers in inches [cm] with Offset Pattern Gagecocks Turned to the Inside
					Stud	Nut	
1	6	14 5/8 [37.1]	9 [22.9]	N/A	12	24	13 1/8 [33.3]
1	7	15 3/4 [40.0]	10 1/8 [25.7]	N/A	12	24	14 1/4 [36.2]
1	9	18 1/8 [46.0]	12 1/2 [31.8]	N/A	14	28	16 5/8 [42.2]
2	6	22 5/8 [57.5]	17 [43.2]	9 [22.9]	12	24	21 1/8 [53.7]
2	7	24 7/8 [63.2]	19 1/4 [48.9]	10 1/8 [25.7]	12	24	23 3/8 [59.4]
2	9	29 5/8 [75.2]	24 [61.0]	12 1/2 [31.8]	14	28	28 1/8 [71.4]
3	6	30 5/8 [77.8]	25 [63.5]	9 [22.9]	12	24	29 1/8 [74.0]
3	7	34 [86.4]	28 3/8 [72.1]	10 1/8 [25.7]	12	24	32 1/2 [82.6]
3	9	41 1/8 [104.5]	35 1/2 [90.2]	12 1/2 [31.8]	14	28	39 5/8 [100.6]

PENBERTHY dimensions

Section 2000
Dimensions 2726.2
Issued 07/08
Replaces 07/05

For: **MODEL TSM-F GAGE**

1/2 1500# LG F SO FLANGES



Minimum vessel centers Dimension "A"
can be reduced by 1 1/2" [3.8 cm] by using
offset pattern gagecocks turned to the inside.

Number of Sections	Glass Size	Dim "A" inches [cm]		Dim "B" inches [cm]		Dim "C" inches [cm]		Quantity per section		Minimum Vessel Centers in inches [cm] with Offset Pattern Gagecocks Turned to the Inside
		without gagecocks						Stud	Nut	
1	6	15 3/4	[40.0]	9	[22.9]	N/A		12	24	14 1/4 [36.2]
1	7	16 7/8	[42.9]	10 1/8	[25.7]	N/A		14	28	15 3/8 [39.1]
1	9	19 1/4	[48.9]	12 1/2	[31.8]	N/A		16	32	17 3/4 [45.1]
2	6	23 3/4	[60.3]	17	[43.2]	9	[22.9]	12	24	22 1/4 [56.5]
2	7	26	[66.0]	19 1/4	[48.9]	10 1/8	[25.7]	14	28	24 1/2 [62.2]
2	9	30 3/4	[78.1]	24	[61.0]	12 1/2	[31.8]	16	32	29 1/4 [74.3]
3	6	31 3/4	[80.6]	25	[63.5]	9	[22.9]	12	24	30 1/4 [76.8]
3	7	35 1/8	[89.2]	28 3/8	[72.1]	10 1/8	[25.7]	14	28	33 5/8 [85.4]
3	9	42 1/4	[107.3]	35 1/2	[90.2]	12 1/2	[31.8]	16	32	40 3/4 [103.5]

PENBERTHY dimensions

Section 2000
Dimensions 2726.3
Issued 07/08
Replaces 07/05

Minimum "A" Calculations for Flanged TSL Gages

TSL Minimum "A" = "B" + 5 5/8" [14.3 cm]

(minimum 4 3/4" [12.1 cm] C-C loop as standard)

Number of Sections	Glass Size	Dim "B" inches [cm]	Dim "C" inches [cm]
1	6	9 [22.9]	N/A
1	7	10 1/8 [25.7]	N/A
1	9	12 1/2 [31.8]	N/A
2	6	17 [43.2]	9 [22.9]
2	7	19 1/4 [48.9]	10 1/8 [25.7]
2	9	24 [61.0]	12 1/2 [31.8]
3	6	25 [63.5]	9 [22.9]
3	7	28 3/8 [72.1]	10 1/8 [25.7]
3	9	35 1/2 [90.2]	12 1/2 [31.8]
4	6	33 [83.8]	9 [22.9]
4	7	37 1/2 [95.3]	10 1/8 [25.7]
4	9	47 [119.4]	12 1/2 [31.8]
5	6	41 [104.1]	9 [22.9]
5	7	46 5/8 [118.4]	10 1/8 [25.7]
5	9	58 1/2 [148.6]	12 1/2 [31.8]
6	6	49 [124.5]	9 [22.9]
6	7	55 3/4 [141.6]	10 1/8 [25.7]
6	9	70 [177.8]	12 1/2 [31.8]
7	6	57 [144.8]	9 [22.9]
7	7	64 7/8 [164.8]	10 1/8 [25.7]
7	9	81 1/2 [207.0]	12 1/2 [31.8]
8	6	65 [165.1]	9 [22.9]
8	7	74 [188.0]	10 1/8 [25.7]
8	9	93 [236.2]	12 1/2 [31.8]
9	6	73 [185.4]	9 [22.9]
9	7	83 1/8 [211.1]	10 1/8 [25.7]
9	9	104 1/2 [265.4]	12 1/2 [31.8]
10	6	81 [205.7]	9 [22.9]
10	7	92 1/4 [234.3]	10 1/8 [25.7]
10	9	116 [294.6]	12 1/2 [31.8]

PENBERTHY

dimensions

Section 2000
 Dimensions 2726.4
 Issued 07/08
 Replaces 07/05

Minimum "A" Calculations for Flanged TSM Gages

TSM Minimum "A" = "B" + 6 3/4" [17.1 cm]

(minimum 4 3/4" [12.1cm] C-C loop as standard)

Number of Sections	Glass Size	Dim "B" inches [cm]	Dim "C" inches [cm]
1	6	9 [22.9]	N/A
1	7	10 1/8 [25.7]	N/A
1	9	12 1/2 [31.8]	N/A
2	6	17 [43.2]	9 [22.9]
2	7	19 1/4 [48.9]	10 1/8 [25.7]
2	9	24 [61.0]	12 1/2 [31.8]
3	6	25 [63.5]	9 [22.9]
3	7	28 3/8 [72.1]	10 1/8 [25.7]
3	9	35 1/2 [90.2]	12 1/2 [31.8]
4	6	33 [83.8]	9 [22.9]
4	7	37 1/2 [95.3]	10 1/8 [25.7]
4	9	47 [119.4]	12 1/2 [31.8]
5	6	41 [104.1]	9 [22.9]
5	7	46 5/8 [118.4]	10 1/8 [25.7]
5	9	58 1/2 [148.6]	12 1/2 [31.8]
6	6	49 [124.5]	9 [22.9]
6	7	55 3/4 [141.6]	10 1/8 [25.7]
6	9	70 [177.8]	12 1/2 [31.8]
7	6	57 [144.8]	9 [22.9]
7	7	64 7/8 [164.8]	10 1/8 [25.7]
7	9	81 1/2 [207.0]	12 1/2 [31.8]
8	6	65 [165.1]	9 [22.9]
8	7	74 [188.0]	10 1/8 [25.7]
8	9	93 [236.2]	12 1/2 [31.8]
9	6	73 [185.4]	9 [22.9]
9	7	83 1/8 [211.1]	10 1/8 [25.7]
9	9	104 1/2 [265.4]	12 1/2 [31.8]
10	6	81 [205.7]	9 [22.9]
10	7	92 1/4 [234.3]	10 1/8 [25.7]
10	9	116 [294.6]	12 1/2 [31.8]