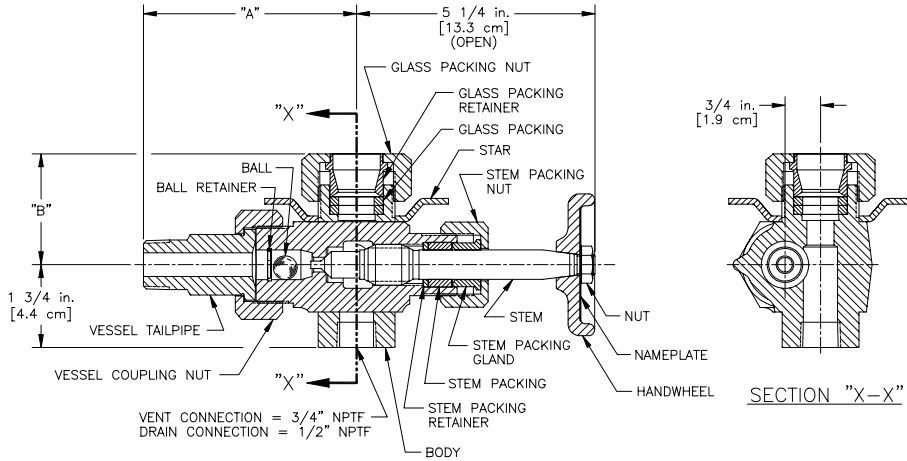


# PENBERTHY dimensions

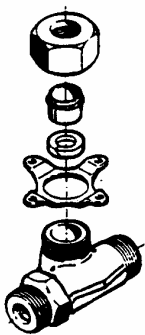
Section 2000  
Dimensions 2750.1  
Issued 09/05  
Replaces 04/87

For: **SERIES N2 GAGECOCKS**

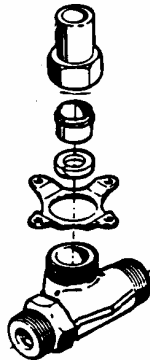


Connection	Dimension "A" in inches [cm]	Dimension "B" in inches [cm]
<b>UNION</b>		
1/2" NPTM	4 3/8 [11.1]	
3/4" NPTM	4 1/2 [11.4]	
1" NPTM	4 5/8 [11.7]	
<b>SOCKETWELD</b>		
1/2" Male Union	4 3/8 [11.1]	
3/4" Male Union	4 1/2 [11.4]	
1" Male Union	4 5/8 [11.7]	
<b>FLANGED</b>		
1/2"-150# R.F.	4 5/8 [11.7]	
1/2"-300# R.F.	4 5/8 [11.7]	
3/4"-150# R.F.	4 3/4 [12.1]	
3/4"-300# R.F.	4 3/4 [12.1]	
1"-150# R.F.	4 7/8 [12.4]	
1"-300# R.F.	4 7/8 [12.4]	
<b>SPHERICAL UNION</b>		
1/2" NPTM	4 9/16 [11.6]	
3/4" NPTM	4 9/16 [11.6]	
<b>STUFFING BOX</b>		
5/8" Dia. Glass		2 1/4 [5.7]
3/4" Dia. Glass		2 1/4 [5.7]
Protector Nut		2 7/8 [7.3]

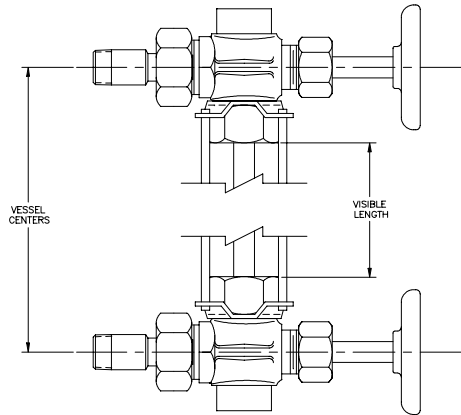
## GAGE CONNECTIONS



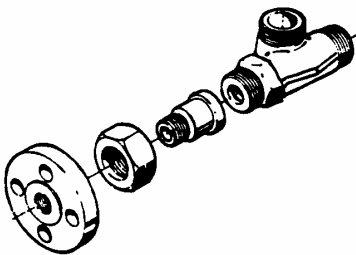
**Stuffing Box  
N2AJ/N2BJ/N2CJ  
Standard**



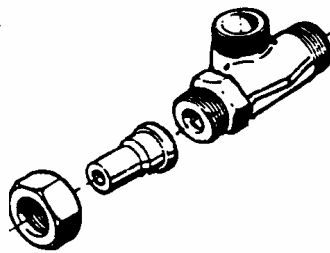
**Stuffing Box With  
Protector Nut Option**



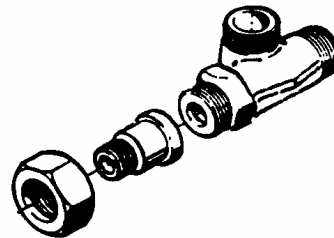
## VESSEL CONNECTIONS



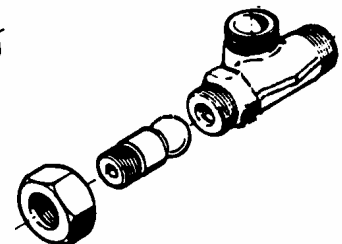
**Flanged  
N2AJ/N2BJ/N2CJ  
Option**



**Socketweld  
N2AJ/N2BJ/N2CJ  
Option**



**Union  
N2AJ/N2BJ/N2CJ  
Standard**

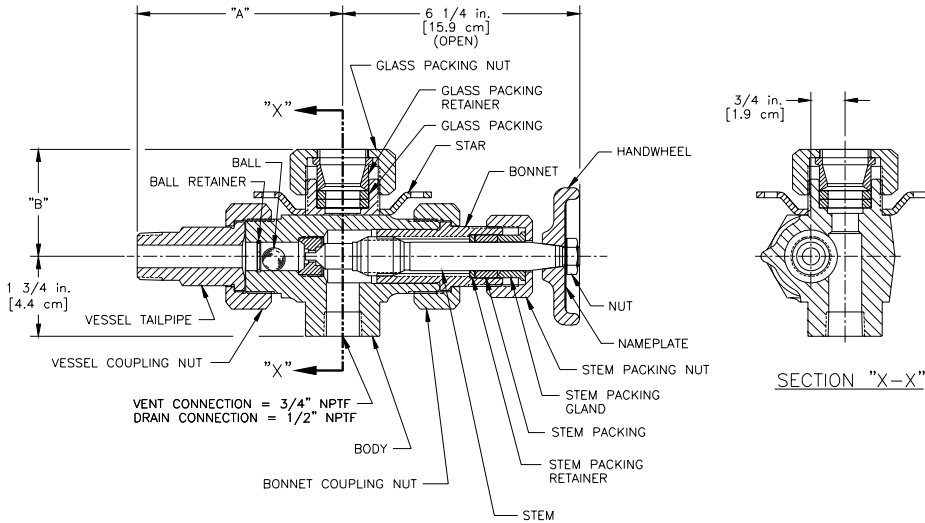


**Spherical Union  
N2AJ/N2BJ/N2CJ  
Option**

# PENBERTHY dimensions

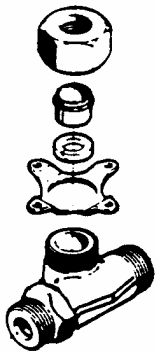
Section 2000  
Dimensions 2750.2  
Issued 09/05  
Replaces 04/87

For: **SERIES K2 GAGECOCKS**

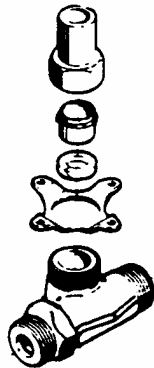


Connection	Dimension "A" in inches [cm]	Dimension "B" in inches [cm]
<b>UNION</b>		
1/2" NPTM	4 3/8 [11.1]	
3/4" NPTM	4 1/2 [11.4]	
1" NPTM	4 5/8 [11.7]	
<b>SOCKETWELD</b>		
1/2" Male Union	4 3/8 [11.1]	
3/4" Male Union	4 1/2 [11.4]	
1" Male Union	4 5/8 [11.7]	
<b>FLANGED</b>		
1/2"-150# R.F.	4 5/8 [11.7]	
1/2"-300# R.F.	4 5/8 [11.7]	
3/4"-150# R.F.	4 3/4 [12.1]	
3/4"-300# R.F.	4 3/4 [12.1]	
1"-150# R.F.	4 7/8 [12.4]	
1"-300# R.F.	4 7/8 [12.4]	
<b>SPHERICAL UNION</b>		
1/2" NPTM	4 9/16 [11.6]	
3/4" NPTM	4 9/16 [11.6]	
<b>STUFFING BOX</b>		
5/8" Dia. Glass		2 1/4 [5.7]
3/4" Dia. Glass		2 1/4 [5.7]
Protector Nut		2 7/8 [7.3]

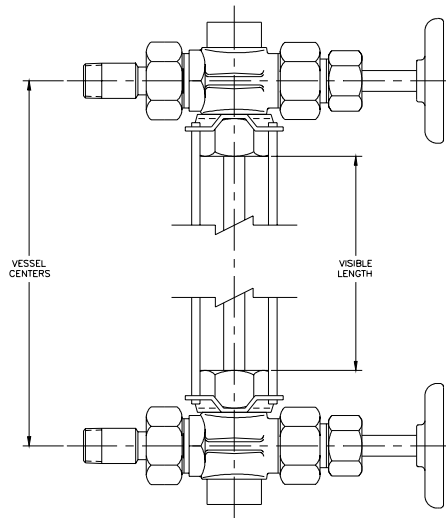
## GAGE CONNECTIONS



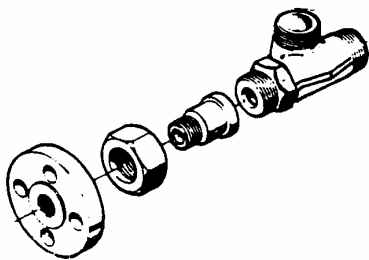
**Stuffing Box  
K2AJ/K2BJ/K2CJ  
Standard**



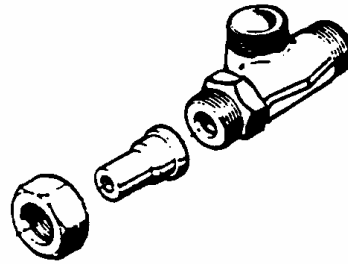
**Stuffing Box  
With Protector  
Nut Option**



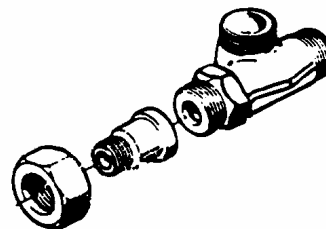
## VESSEL CONNECTIONS



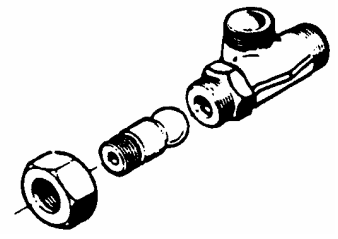
**Flanged  
K2AJ/K2BJ/K2CJ  
Option**



**Socketweld  
K2AJ/K2BJ/K2CJ  
Option**



**Union  
K2AJ/K2BJ/K2CJ  
Standard**



**Spherical Union  
K2AJ/K2BJ/K2CJ  
Option**