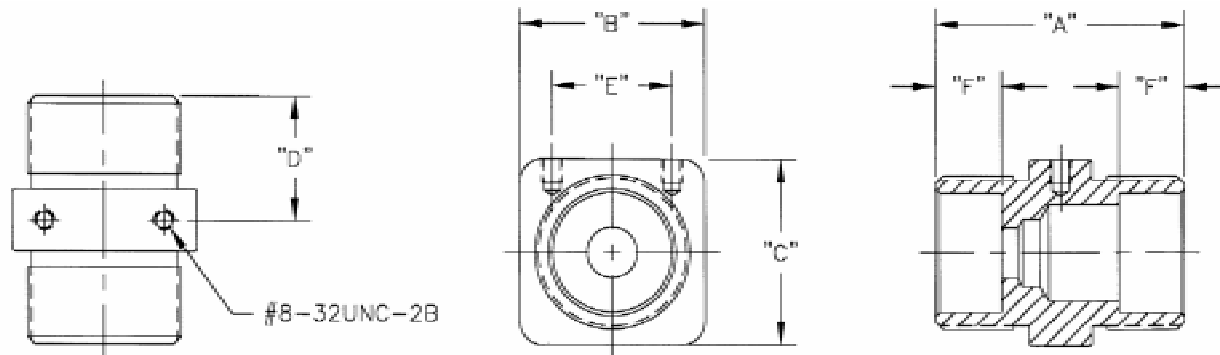


PENBERTHY dimensions

Section 2000
Dimensions 2754
Issued 07/05
Replaces 12/94

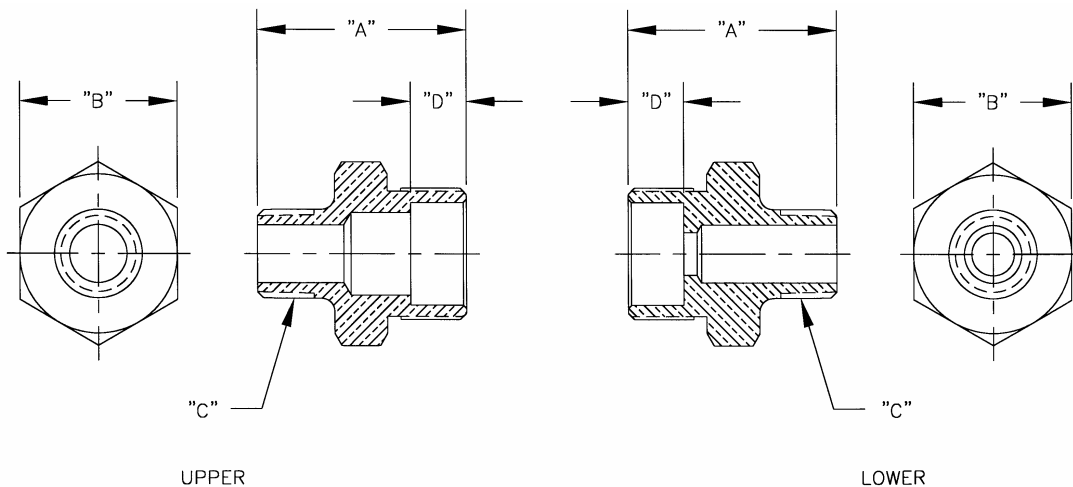
For: 5/8" AND 3/4" GLASS UNION AND HYDRAULIC ADAPTER

GLASS UNION



Size	Material	Dimensions in inches and [cm]					
		"A"	"B"	"C"	"D"	"E"	"F"
5/8" and 3/4"	Carbon Steel, Brass & 316 STS	2 [5.1]	1 1/2 [3.8]	1 1/2 [3.8]	1 [2.5]	31/32 [2.5]	17/32 [1.3]

HYDRAULIC ADAPTER



	Size	Material	Dimensions in inches and [cm]			
			"A"	"B"	"C"	"D"
Upper Adapter	5/8" and 3/4"	Carbon Steel, Brass & 316 STS	1 63/64 [5.0]	1 1/2 [3.8]	1/2 NPT	17/32 [1.3]
Lower Adapter	5/8" and 3/4"	Carbon Steel, Brass & 316 STS	1 63/64 [5.0]	1 1/2 [3.8]	1/2 NPT	17/32 [1.3]