

PENBERTHY

application report

Section 2000
Application Report 2789
Issued 05/05
Replaces 10/04

For: GAGE SUPPORT BRACKETS FOR SERIES L, M, H, & LC GAGES

Description:

Gage support brackets are recommended for long gages to decrease the load placed on nipples and gagecocks. The C-1018 steel plate brackets are welded directly to the gage chamber and attached to a matching support plate (not supplied by Penberthy) on the vessel.

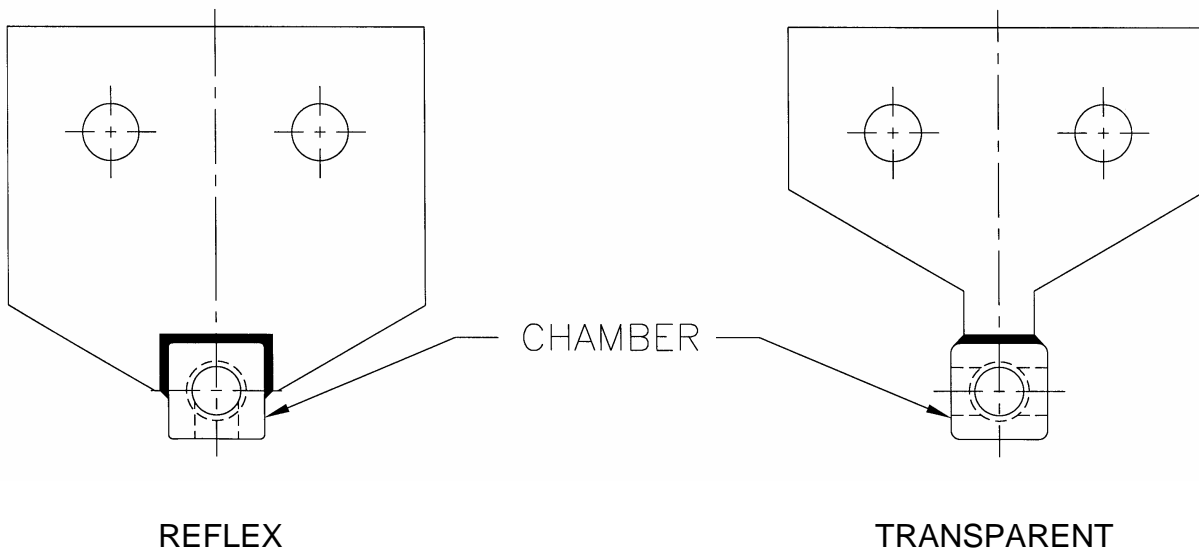
Location:

Reflex Gage: Support brackets are welded to the back side of the chamber between sections.

Transparent Gage: Support brackets are welded to the right or left side of the chamber between sections.

Brackets are installed perpendicular to the direction of the chamber.

Penberthy installation drawings indicate the exact location of supports on gages.



Application:

Support brackets should be used whenever the distance between supports, either vessel connection or support plate, is 54 inches or more. Brackets are available on Series L, M, H and LC Gages, with carbon steel or stainless steel chambers. Gage support brackets are only available as factory installed.